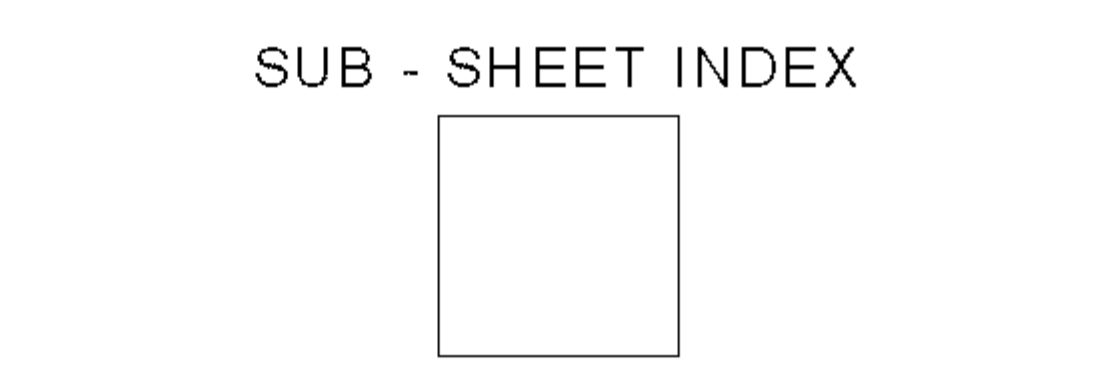
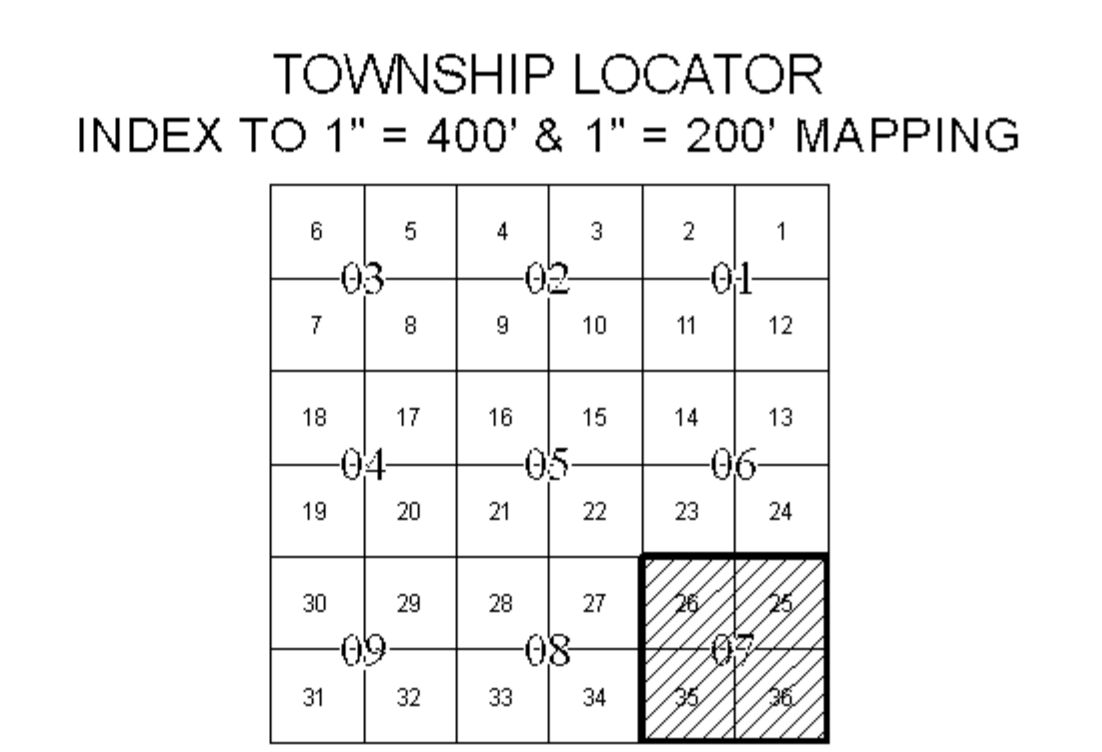
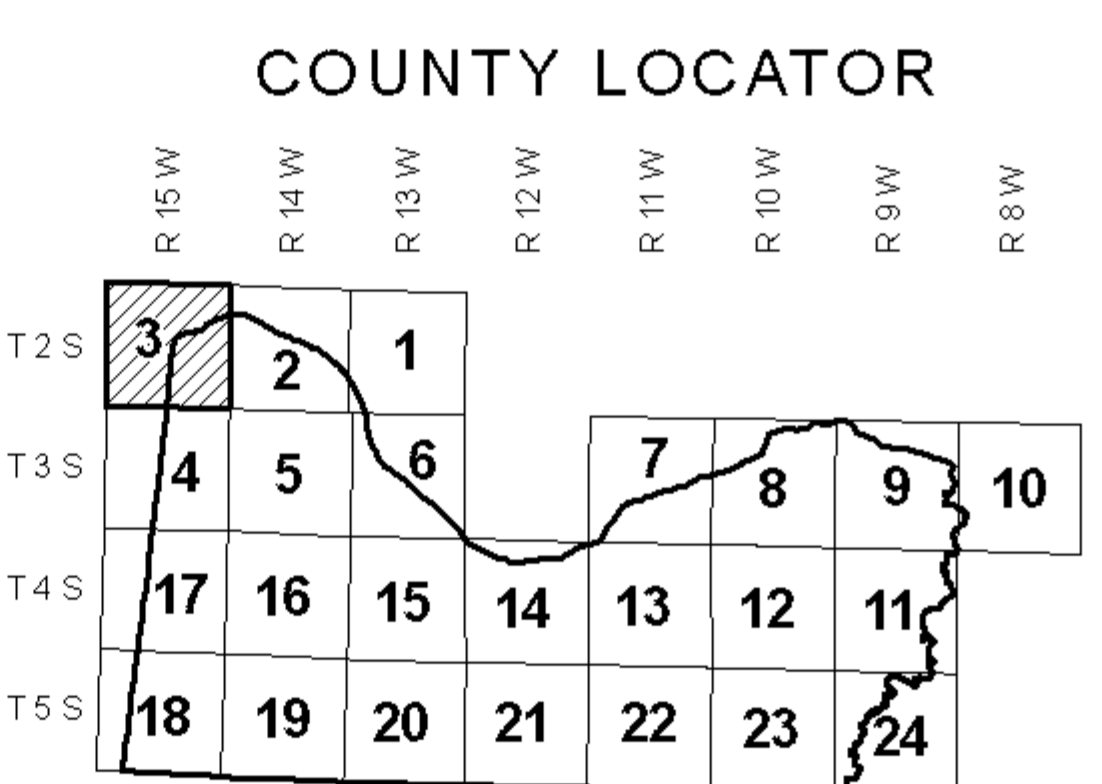
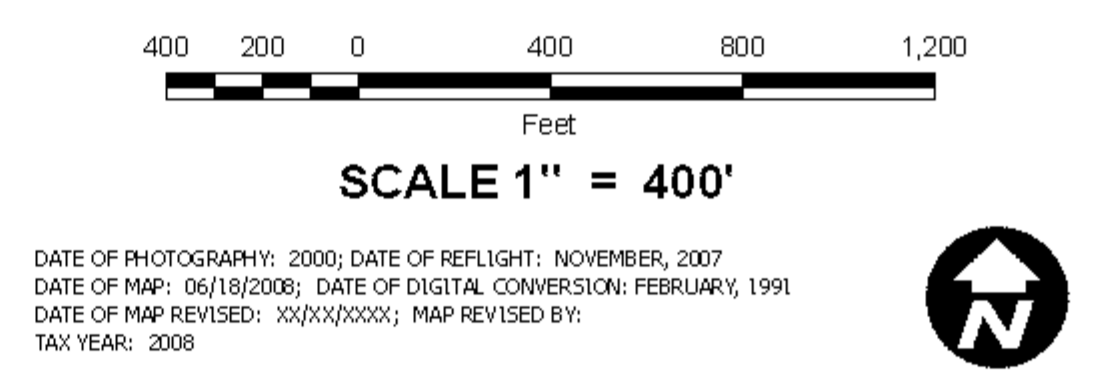




DIGITAL OWNERSHIP MAP  
**COUNTY OF COLBERT**  
 PREPARED UNDER THE JOINT DIRECTION  
 OF THE  
**STATE OF ALABAMA**  
**DEPARTMENT OF REVENUE**  
 AD VALOREM TAX DIVISION

**Bill Thompson**  
 Revenue Commissioner



**LEGEND**

COUNTY LINE	—	AREA (FROM DEED)	10.5 Ac.
CITY LIMIT LINE	—	AREA (CALCULATED)	10.5 AC(C)
EASEMENT LINE	—	DIMENSION (FROM DEED)	44
TOWNSHIP LINE	—	DIMENSION (SCALED)	661
SECTION LINE	—	INTERSTATE HIGHWAY	
PROPERTY LINE	—	U.S. HIGHWAY	
SUBDIVISION LINE	—	STATE HIGHWAY	
ROAD R/W	—	COUNTY HIGHWAY	
ROAD TRAVEL PATH	—	COUNTY HIGHWAY 911 NUMBERING	
PRIVATE ROAD OR TRAIL	—	ROADS OR STREETS	BY NAME
RAILROAD R/W	—	PARCEL NUMBER	15 15.001
WATER	—	SUB LOT NUMBER	29
LAND HOOK	—	MAP BLOCK NUMBER	
ORIGINAL SUB LOT LINE	—	MAP BLOCK LIMIT	
MAJOR TRANSMISSION LINES (POWER)	—	MAP BLOCK TICK	
MAJOR TRANSMISSION LINES (GAS OR OIL)	—	SUB. BLOCK NUMBER	
CONFLICT	—	SECTION CORNERS	2 1 11 12
CHURCHES, SCHOOLS, CEMETERIES, AIRPORTS, ETC.	—	STATE PLANE COORDINATES	
TVA MARKER SYMBOLS	—		2278000

**REVISIONS**

DATE	BY	CHANGES OR ADDITIONS

COUNTY LOCATOR **03** TOWNSHIP LOCATOR **07**  
 TOWNSHIP **02** SOUTH, RANGE **15** WEST  
**20-03-07**  
 MAP NUMBER

MAPS TO BE USED FOR TAX PURPOSES ONLY - NOT TO BE USED FOR CONVEYANCE