

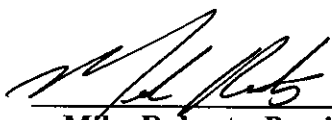
**ORDER: TABLE PLANNING COMMISSION RECOMMENDATION TO APPROVE
THE OXFORD GREEN SUBDIVISION CONDITIONAL USE PERMIT**

Motion was made by Larry Gillespie, duly seconded by Chad McLarty, to table Planning Commission recommendation to approve The Oxford Green Subdivision Conditional Use Permit.

The vote on the motion was as follows:

Supervisor Brent Larson, voted yes
Supervisor Larry Gillespie, voted yes
Supervisor David Rikard, absent
Supervisor Chad McLarty, voted yes
Supervisor Mike Roberts, voted yes

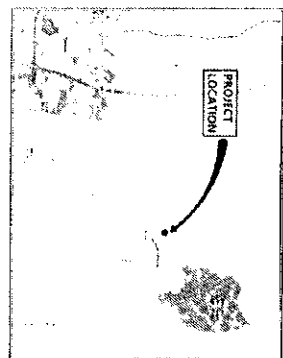
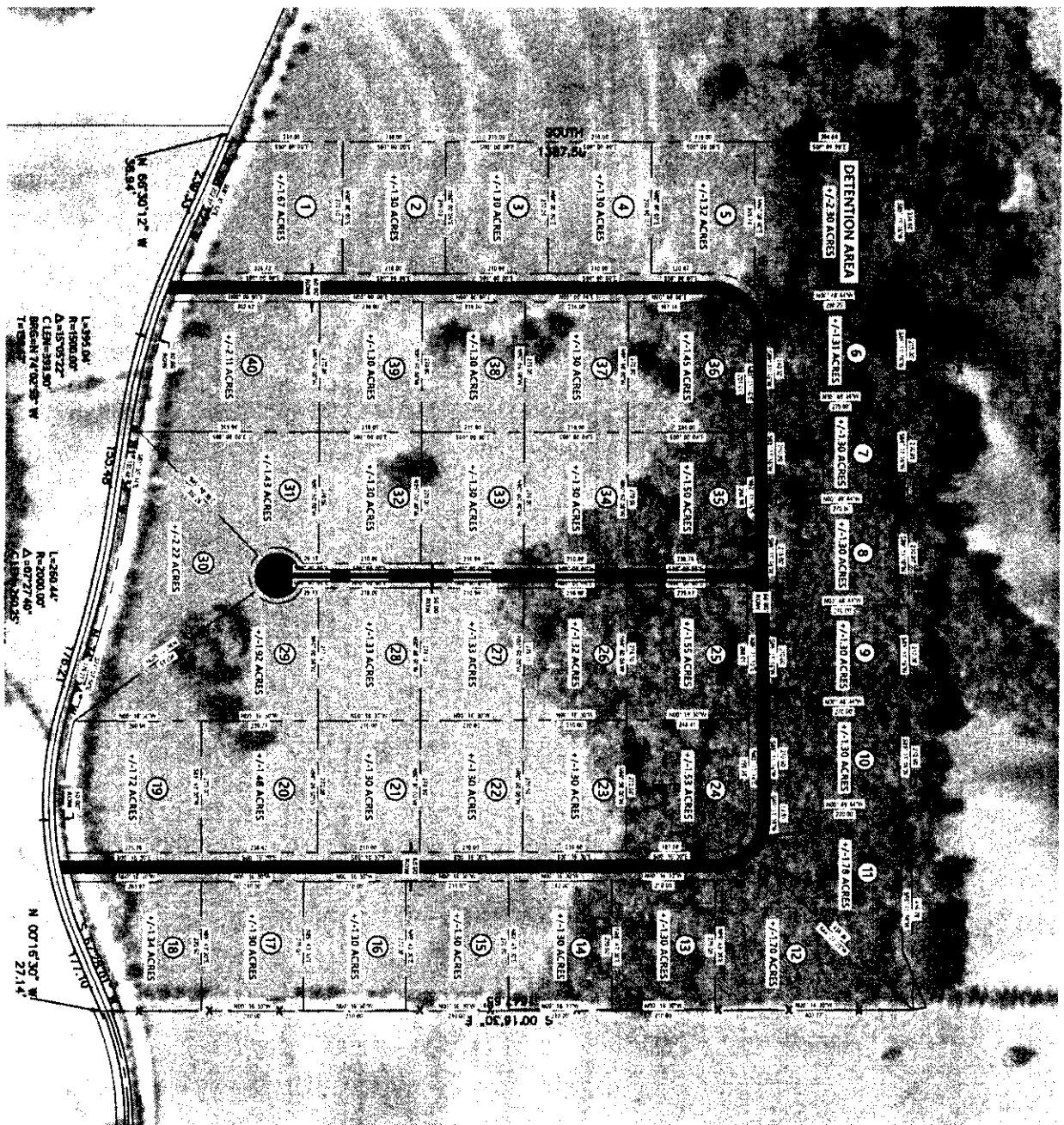
After the vote, President Roberts, declared the motion carried, this the 20th day of November, 2023.



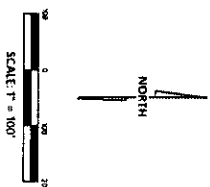
**Mike Roberts, President
Board of Supervisors**



Sherry Wall, Chancery Clerk



SITE DATA TABLE
PROPERTY AREA: 67.34 AC
ZONING: A-1
LOT: 40
MIN LOT SIZE: 1.30 AC



SITE PLAN OXFORD GREEN - SUBDIVISION CR 212 LAFAYETTE COUNTY, MISSISSIPPI

JM ENGINEERING
AND DESIGN, LLC
6601 801-403

C-100

DRAWN BY	JAM
CHECKED BY	JAM
PROJECT NO	5300
DATE	06/01/2023
SCALE	1" = 100'
REVISION	