

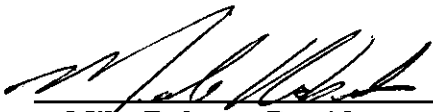
**ORDER: AUTHORIZE COMMERCIAL MEDIUM DENSITY (C-2) USE, DEEP SOUTH  
GARDENS, IN A RURAL (A-1) DISTRICT ON LAFAYETTE COUNTY PARCEL  
157-25-016**

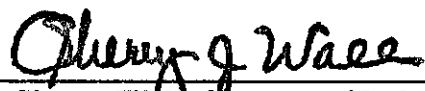
Motion was made by Chad McLarty, duly seconded by Brent Larson, to authorize Commercial Medium Density (C-2) use, Deep South Gardens, in a Rural (A-1) District on Lafayette County Parcel 157-25-016.

The vote on the motion was as follows:

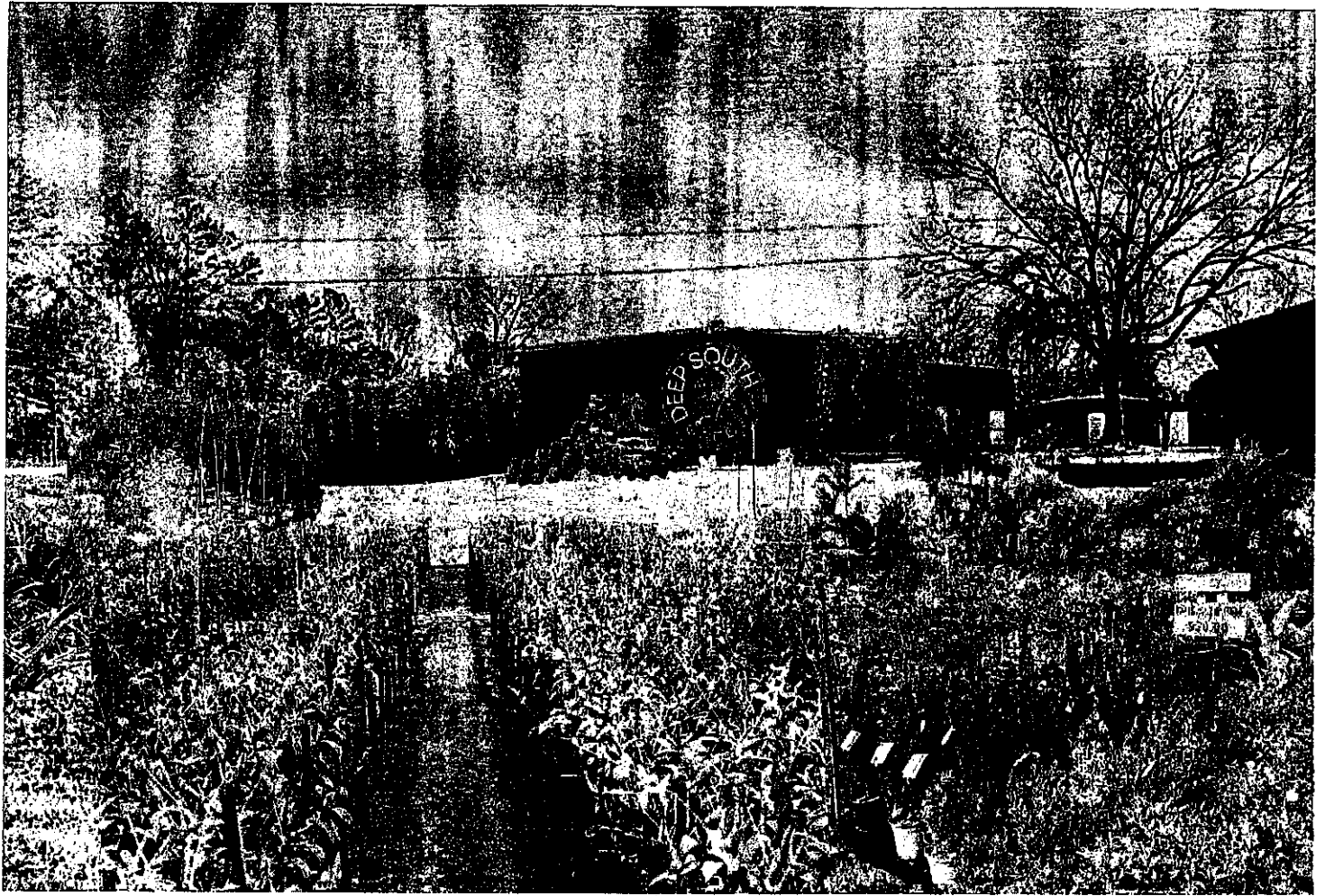
Supervisor Brent Larson, voted yes  
Supervisor Larry Gillespie, voted yes  
Supervisor David Rikard, voted yes  
Supervisor Chad McLarty, voted yes  
Supervisor Mike Roberts, voted yes

After the vote, President Roberts, declared the motion carried, this the 17<sup>th</sup> day of April, 2023.

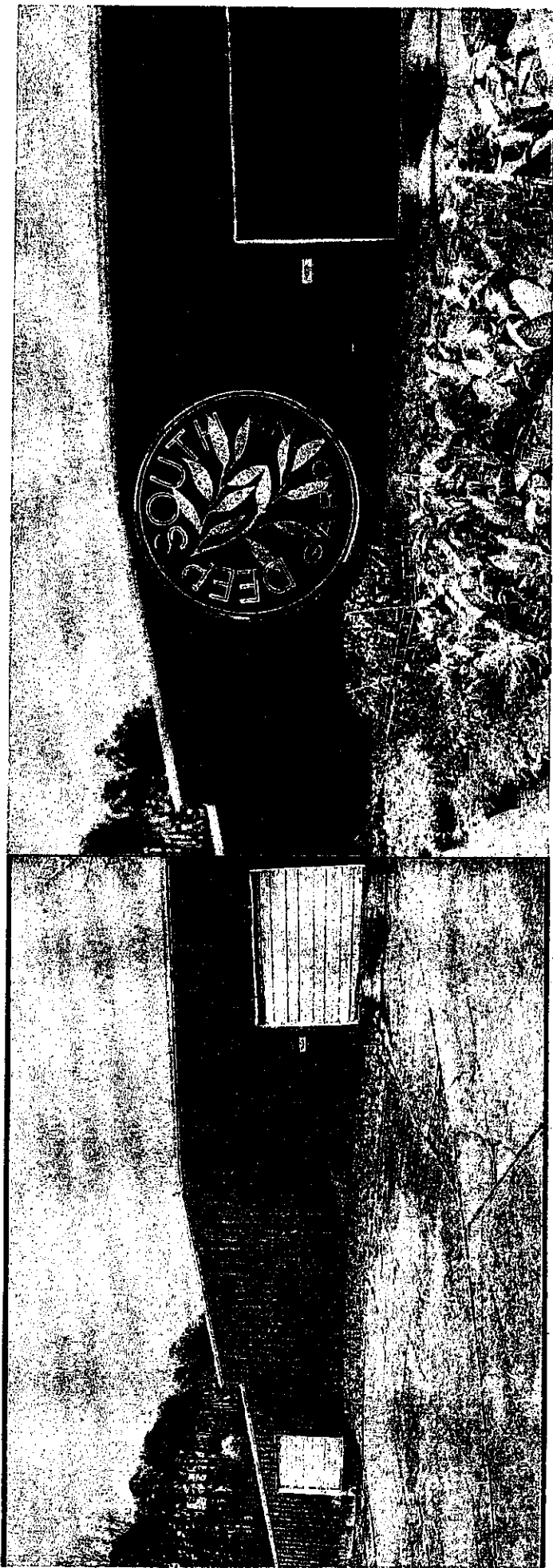
  
\_\_\_\_\_  
Mike Roberts, President  
Board of Supervisors

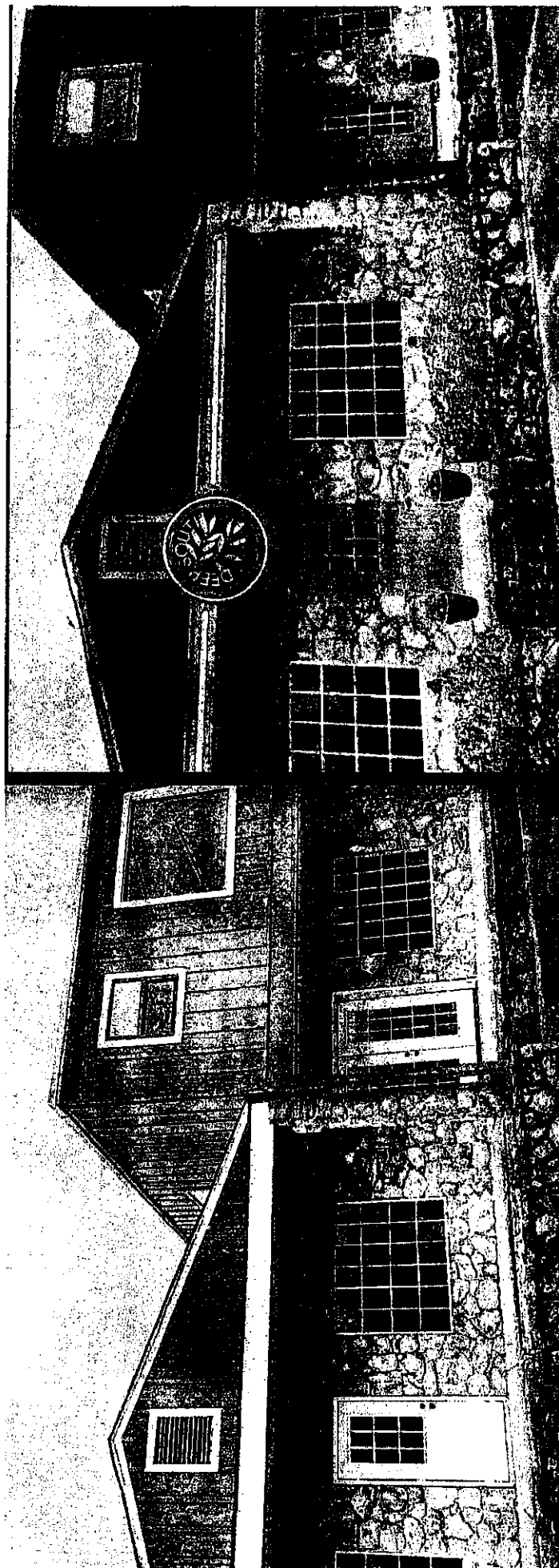
  
\_\_\_\_\_  
Sherry Wall, Chancery Clerk

**SCANNED**  
\_\_\_\_\_











**Statement of Use for old Cedar Bucket Property  
979 Highway 6 West | Oxford, MS**

Upon opening, we envision a park-like, mixed use property that adds appeal upon entering and exiting Oxford. To maintain the property uniqueness and natural beauty of the pond and trees, we will keep much of the current foliage and expound upon the landscaping to make an eye-catching shopping center. We will keep the current building footprints and update with property clean-up, fresh paint and needed repairs.

We will establish residential leases for the refreshed residences as well as for the commercial medical space, retail design center, garden center and warehouses.

Apartment 1-3 will share a mid-size garage with individual spacing and garage doors.

Current Tenants slated to occupy:

**Design Center for Home Finishes (As of yet, unnamed)**

Our vision is to revolutionize the way people design and furnish their homes with high-end, semi-custom products. We believe that every homeowner should have access to exquisite finishes that are tailored to their unique tastes and lifestyles at affordable costs.

Through our range of premium products, including semi-custom cabinets, faucets, countertops, and tiles, we aim to inspire our customers to transform their homes into luxurious, functional spaces that reflect their personalities and aspirations.

We are committed to delivering exceptional quality and craftsmanship, unparalleled customer service, and innovative design solutions that exceed our customers' expectations. With a passion for excellence and a relentless pursuit of perfection, we strive to be the leading provider of premium home finishes in the industry.

Our goal is to create a world where everyone has access to the finest finishes for their homes, elevating their living spaces and enriching their lives in ways they never thought possible.

**Diabet-eez Insulin Infusion Clinic**

Diabet-eez focuses primarily on patients with metabolic disorders, such as Type 1, Type 2, prediabetes, and insulin resistance.

Our physician-directed metabolic restoration program provides patient care with individualized care plans. This care plan is to restore, regenerate, and repair the damage caused by metabolic failure.

Diabet-eez understands diagnosing metabolic failure and treating metabolic disorders can be challenging. Our new, groundbreaking treatment provides physicians with the right tools to help patients gain their quality of life back.



For HERS, Garmin, and OpenStreetMap contributors and the Garmin community. For HERS, Garmin, GeoTechnologies, Inc., USGS, EPA