

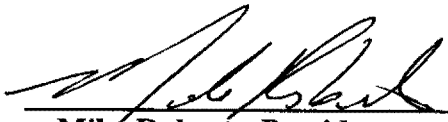
**ORDER: AUTHORIZE THE BEARD STORAGE FINAL SITE PLAN**

Motion was made by David Rikard, duly seconded by Chad McLarty, to authorize the Beard Storage Final Site Plan.

The vote on the motion was as follows:

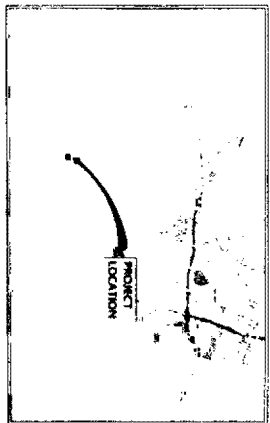
Supervisor Brent Larson, voted yes  
Supervisor Larry Gillespie, voted yes  
Supervisor David Rikard, voted yes  
Supervisor Chad McLarty, voted yes  
Supervisor Mike Roberts, voted yes

After the vote, President Roberts, declared the motion carried, this the 17<sup>th</sup> day of January, 2023.

  
\_\_\_\_\_  
**Mike Roberts, President**  
**Board of Supervisors**

  
\_\_\_\_\_  
**Sherry Wall, Chancery Clerk**

# BEARD STORAGE EXPANSION OLD TAYLOR ROAD / CR 3074 LAFAYETTE COUNTY, MISSISSIPPI



INDEX OF PLANS	
CONTRACT	C-000
PROJECT NO.	XXXX
SITE MAPS	C-011
EXISTING CONDITIONS	C-020
PROPOSED CONDITIONS	C-030
ROAD ACCESS PLAN	C-040
UTILITY PLAN	C-050
GRADING PLAN	C-060
EROSION CONTROL PLAN	C-070
SITE DETAILS	C-080
CONSTRUCTION DETAILS	C-090
LOCATION CONTROL DETAILS	C-100

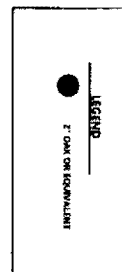
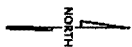
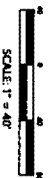
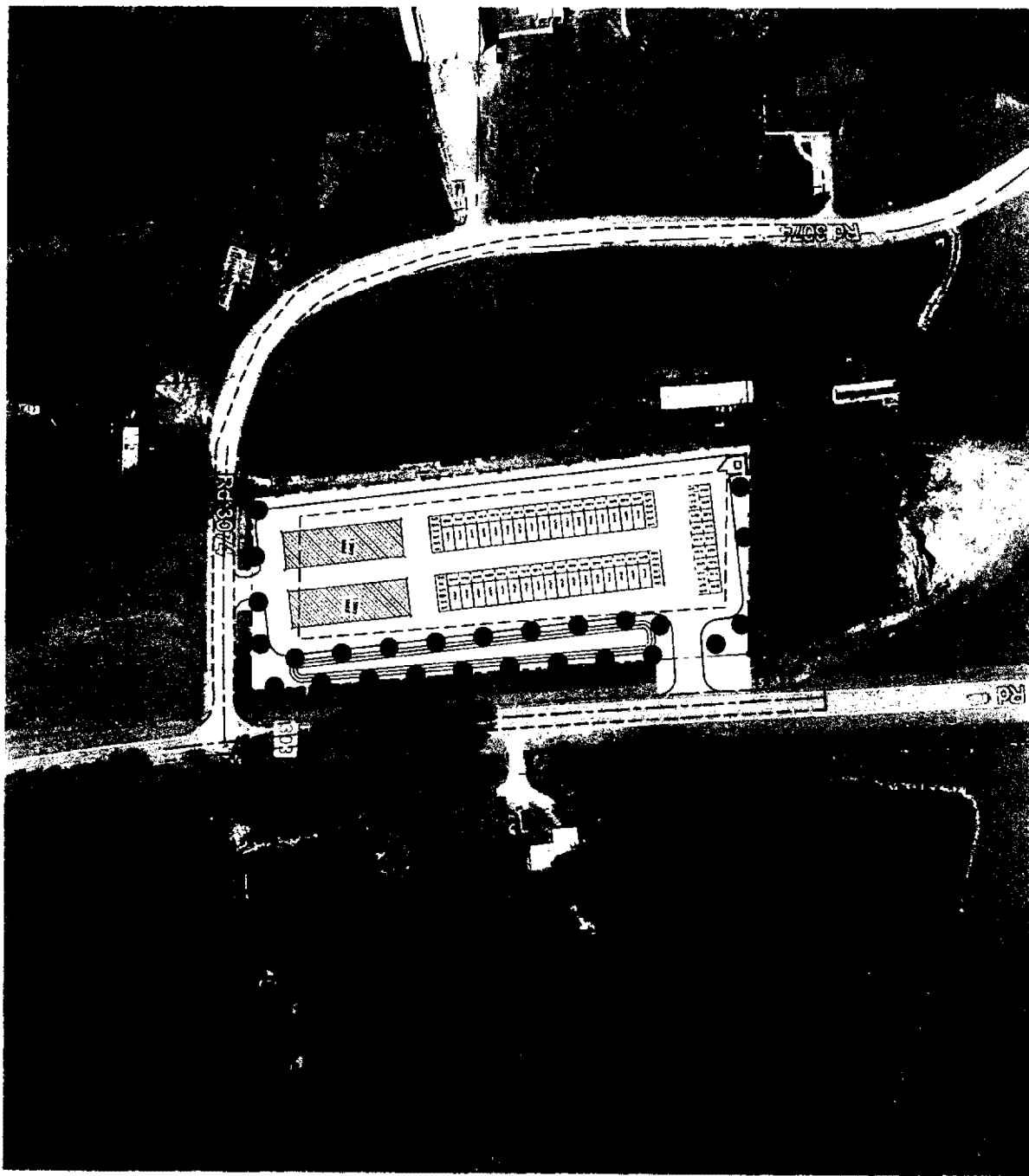
JM ENGINEERING  
AND DESIGN, LLC  
DORRIS, MS  
(601) 881-4803

BEARD STORAGE EXPANSION  
OLD TAYLOR ROAD  
LAFAYETTE COUNTY, MISSISSIPPI

DRAWN BY	JM
CHECKED BY	JM
PROJECT NO.	XXXX
DATE	10/15/2022
SCALE	
REVISION	10/15/2022

C-000



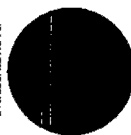


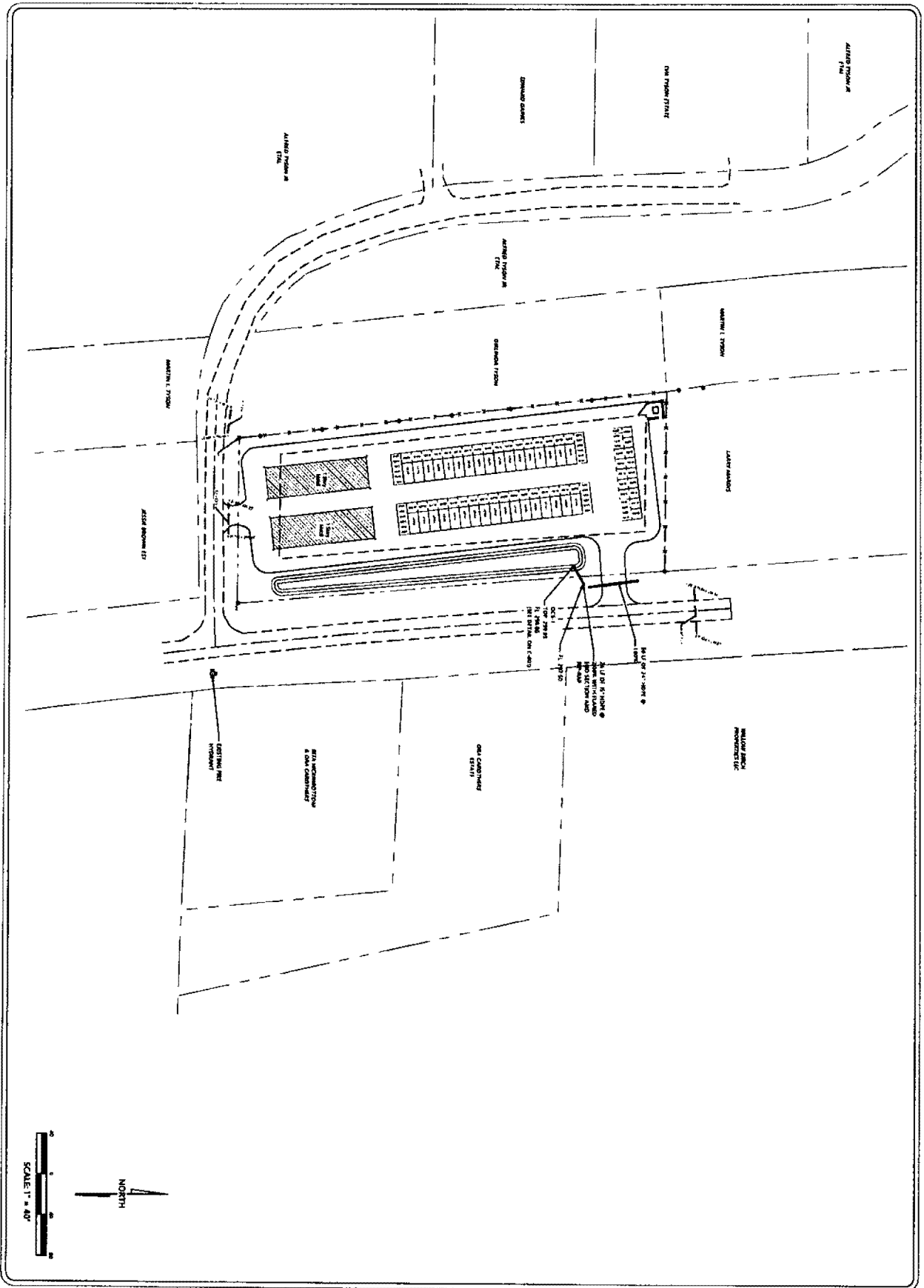
C-300

DRAWN BY	JAM
CHECKED BY	JAM
PROJECT NO.	1000
DATE	10/28/2002
SCALE	1" = 40'
REVISION	12/02/2002

LANDSCAPE PLAN  
BEARD STORAGE EXPANSION  
OLD TAYLOR ROAD  
LAFAYETTE COUNTY, MISSISSIPPI

JM ENGINEERING  
AND DESIGN, LLC  
1000 N. 10TH ST.  
TULSA, OK 74103





DRAWN BY: JBA		CHECKED BY: JBA	
PROJECT NO: 1000		DATE: 12/15/2012	
SCALE: 1" = 40'		REVISION: 12/15/2012	
C-500		J&M ENGINEERING AND DESIGN, LLC DORRIS, MS (601) 881-1400	