

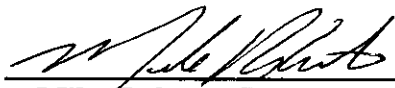
**ORDER: APPROVE MERION SUBDIVISION PHASE 1 PRELIMINARY  
SUBDIVISION PLAT**

Motion was made by Larry Gillespie, duly seconded by Brent Larson, to approve Merion Subdivision Phase 1 Preliminary Subdivision Plat.

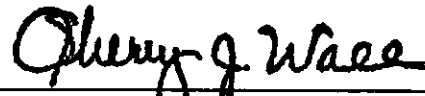
The vote on the motion was as follows:

Supervisor Brent Larson, voted yes  
Supervisor Larry Gillespie, voted yes  
Supervisor David Rikard, voted yes  
Supervisor Chad McLarty, voted yes  
Supervisor Mike Roberts, voted yes

After the vote, President Roberts, declared the motion carried, this the 7<sup>th</sup> day of September, 2021.



**Mike Roberts, President  
Board of Supervisors**

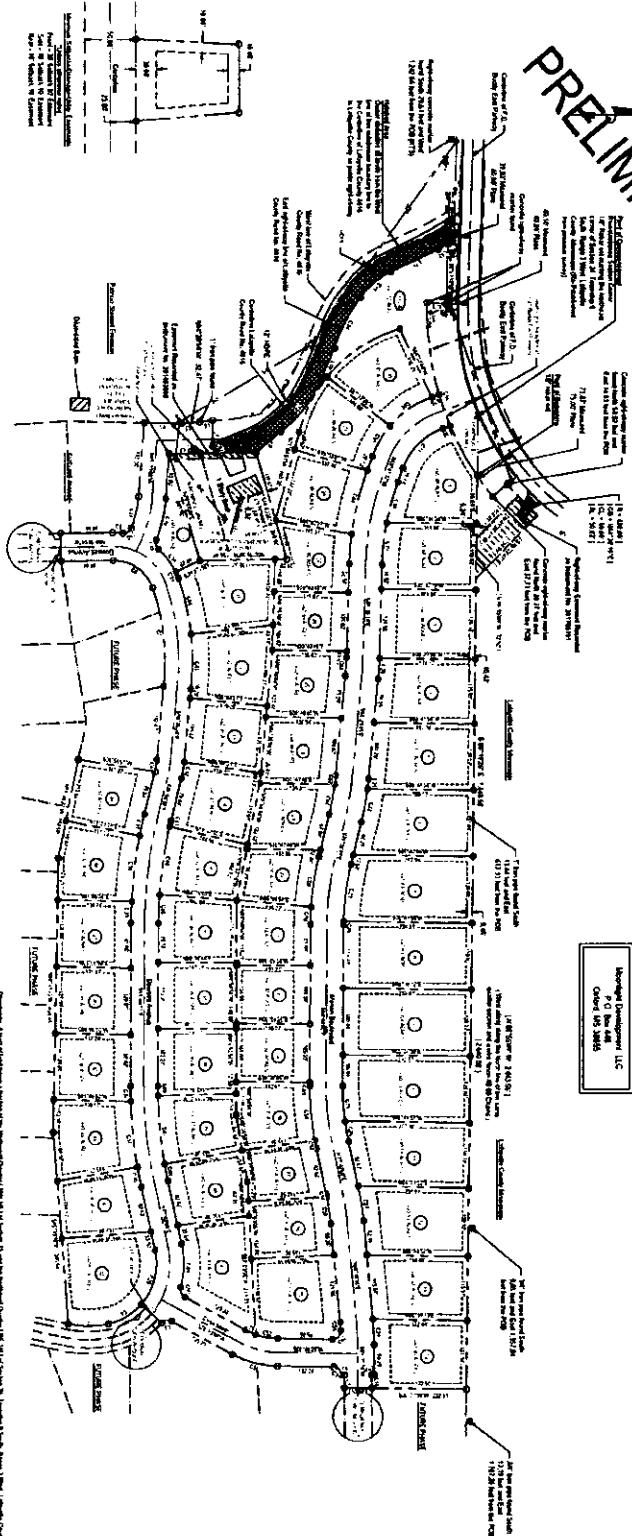


**Sherry Wall, Chancery Clerk**

PRELIMINARY

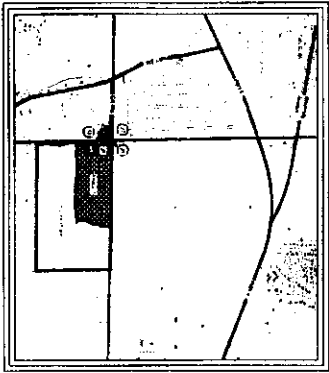
MERION SUBDIVISION PHASE 1  
TOTAL AREA: 27.10 ACRES  
49 RESIDENTIAL LOTS

Merion Development, LLC  
Order No. 0085



LEGEND

Legend table with two columns. The first column lists symbols for roads, utilities, easements, and other features. The second column lists symbols for residential lots, including various zoning and lot types. The table includes items like 'RIGHT OF WAY', 'UTILITY EASEMENT', 'WATER EASEMENT', 'SEWER EASEMENT', 'GAS EASEMENT', 'RECREATION LOT', 'RESIDENTIAL LOT', 'LOT 1-49', and 'SUBDIVISION BOUNDARY'.



PRELIMINARY

Merion Development, LLC  
Order No. 0085

Subdivision Plat for  
Merion Subdivision Phase 1  
A Part of Landberg's Fraction of the Northwest Quarter  
(1/4) of Section 34 & the Northwest Quarter  
(1/4) of Section 35, Township 6 South, Range 3 West  
Leflore County, Mississippi



WILLIAMS ENGINEERING CONSULTANTS, INC.  
Professional Engineers | Professional Land Surveyors

720 NORTH LAKE BOULEVARD, SUITE A  
PO BOX 1117 OXFORD, MISSISSIPPI 39363  
(601) 934-2400

Table with columns: Station, ELEVATION, DATE, and other details. It includes a title block with 'Subdivision Plat' and '1 of 2'.

