


**ORDER: AUTHORIZE PLANNING COMMISSION'S APPROVAL FOR  
SPLINTER CREEK PLAT AMENDMENT**

Motion was made by Larry Gillespie, duly seconded by Chad McLarty, to authorize Planning Commission's approval for Splinter Creek plat amendment.

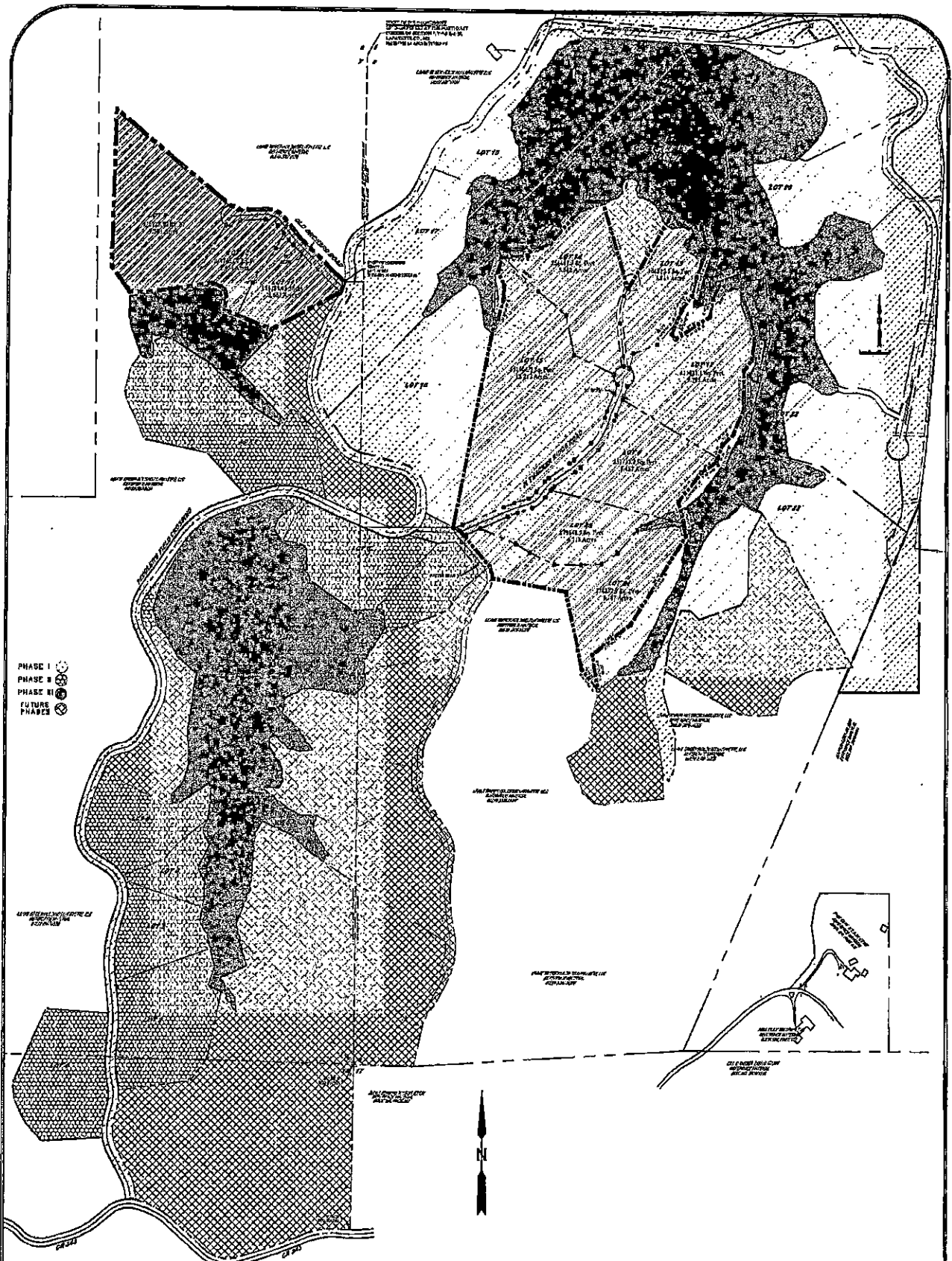
The vote on the motion was as follows:

Supervisor Brent Larson, voted yes  
Supervisor Larry Gillespie, voted yes  
Supervisor David Rikard, voted yes  
Supervisor Chad McLarty, voted yes  
Supervisor Mike Roberts, voted yes

After the vote, President Roberts, declared the motion carried, this the 3<sup>rd</sup> day of August, 2020.

  
\_\_\_\_\_  
Mike Roberts, President  
Board of Supervisors

  
\_\_\_\_\_  
Sherry Wall, Chancery Clerk



- PHASE I
- PHASE II
- PHASE III
- FUTURE PHASES

1.0

**COVER SHEET**  
 FOR  
**SPLINTER CREEK,**  
**PHASE III, AMENDMENT 1**  
 SEC. 7,8,&18 T-9-S, R-4-W, LAFAYETTE CO., MS

NO.	DATE	REVISIONS:







DATE	
BY	
FOR	
REVISIONS	
NO.	
DATE	
BY	
REVISION	
NO.	
DATE	
BY	
REVISION	

**CERTIFICATE SHEET**  
FOR  
**SPLINTER CREEK,**  
**PHASE III, AMENDMENT 1**  
SEC. 7, 8, & 18-T-9-S, R-4-W, LARAVETTE CO., MS.

SCALE	
DATE	
BY	
FOR	

3.0  
ALL DIMENSIONS  
UNLESS OTHERWISE  
SPECIFIED ARE IN  
FEET AND INCHES  
AND DECIMALS THEREOF  
ARE TO THE NEAREST  
HUNDREDTH (0.01)

**- DESCRIPTION OF PARCELS -**

THE PARCELS SHOWN HEREON ARE PART OF THE LANDS OWNED BY THE STATE OF MISSISSIPPI AND ARE SUBJECT TO THE PROVISIONS OF THE CONSTITUTION OF THE STATE OF MISSISSIPPI AND THE STATUTES THEREOF. THE PARCELS SHOWN HEREON ARE SUBJECT TO THE PROVISIONS OF THE CONSTITUTION OF THE STATE OF MISSISSIPPI AND THE STATUTES THEREOF. THE PARCELS SHOWN HEREON ARE SUBJECT TO THE PROVISIONS OF THE CONSTITUTION OF THE STATE OF MISSISSIPPI AND THE STATUTES THEREOF.

THE PARCELS SHOWN HEREON ARE PART OF THE LANDS OWNED BY THE STATE OF MISSISSIPPI AND ARE SUBJECT TO THE PROVISIONS OF THE CONSTITUTION OF THE STATE OF MISSISSIPPI AND THE STATUTES THEREOF. THE PARCELS SHOWN HEREON ARE SUBJECT TO THE PROVISIONS OF THE CONSTITUTION OF THE STATE OF MISSISSIPPI AND THE STATUTES THEREOF. THE PARCELS SHOWN HEREON ARE SUBJECT TO THE PROVISIONS OF THE CONSTITUTION OF THE STATE OF MISSISSIPPI AND THE STATUTES THEREOF.

**OWNER'S CERTIFICATE**

I, the undersigned, being duly qualified by law to practice as a Surveyor in the State of Mississippi, do hereby certify that the above described lands are the lands of the State of Mississippi and are subject to the provisions of the Constitution of the State of Mississippi and the Statutes thereof.

WITNESSETH MY HAND AND SEAL OF OFFICE THIS \_\_\_\_\_ DAY OF \_\_\_\_\_ 20\_\_\_\_.

\_\_\_\_\_  
SURVEYOR

**COUNTY COMMISSIONERS**

I, the undersigned, being duly qualified by law to practice as a County Commissioner in the State of Mississippi, do hereby certify that the above described lands are the lands of the State of Mississippi and are subject to the provisions of the Constitution of the State of Mississippi and the Statutes thereof.

\_\_\_\_\_  
COUNTY CLERK

**- DESCRIPTION OF PARCELS -**

THE PARCELS SHOWN HEREON ARE PART OF THE LANDS OWNED BY THE STATE OF MISSISSIPPI AND ARE SUBJECT TO THE PROVISIONS OF THE CONSTITUTION OF THE STATE OF MISSISSIPPI AND THE STATUTES THEREOF. THE PARCELS SHOWN HEREON ARE SUBJECT TO THE PROVISIONS OF THE CONSTITUTION OF THE STATE OF MISSISSIPPI AND THE STATUTES THEREOF. THE PARCELS SHOWN HEREON ARE SUBJECT TO THE PROVISIONS OF THE CONSTITUTION OF THE STATE OF MISSISSIPPI AND THE STATUTES THEREOF.

THE PARCELS SHOWN HEREON ARE PART OF THE LANDS OWNED BY THE STATE OF MISSISSIPPI AND ARE SUBJECT TO THE PROVISIONS OF THE CONSTITUTION OF THE STATE OF MISSISSIPPI AND THE STATUTES THEREOF. THE PARCELS SHOWN HEREON ARE SUBJECT TO THE PROVISIONS OF THE CONSTITUTION OF THE STATE OF MISSISSIPPI AND THE STATUTES THEREOF. THE PARCELS SHOWN HEREON ARE SUBJECT TO THE PROVISIONS OF THE CONSTITUTION OF THE STATE OF MISSISSIPPI AND THE STATUTES THEREOF.

**COUNTY COMMISSIONERS**

I, the undersigned, being duly qualified by law to practice as a County Commissioner in the State of Mississippi, do hereby certify that the above described lands are the lands of the State of Mississippi and are subject to the provisions of the Constitution of the State of Mississippi and the Statutes thereof.

\_\_\_\_\_  
COUNTY CLERK

**COUNTY COMMISSIONERS**

I, the undersigned, being duly qualified by law to practice as a County Commissioner in the State of Mississippi, do hereby certify that the above described lands are the lands of the State of Mississippi and are subject to the provisions of the Constitution of the State of Mississippi and the Statutes thereof.

\_\_\_\_\_  
COUNTY CLERK

**- DESCRIPTION OF TRACTS -**

THE PARCELS SHOWN HEREON ARE PART OF THE LANDS OWNED BY THE STATE OF MISSISSIPPI AND ARE SUBJECT TO THE PROVISIONS OF THE CONSTITUTION OF THE STATE OF MISSISSIPPI AND THE STATUTES THEREOF. THE PARCELS SHOWN HEREON ARE SUBJECT TO THE PROVISIONS OF THE CONSTITUTION OF THE STATE OF MISSISSIPPI AND THE STATUTES THEREOF. THE PARCELS SHOWN HEREON ARE SUBJECT TO THE PROVISIONS OF THE CONSTITUTION OF THE STATE OF MISSISSIPPI AND THE STATUTES THEREOF.

THE PARCELS SHOWN HEREON ARE PART OF THE LANDS OWNED BY THE STATE OF MISSISSIPPI AND ARE SUBJECT TO THE PROVISIONS OF THE CONSTITUTION OF THE STATE OF MISSISSIPPI AND THE STATUTES THEREOF. THE PARCELS SHOWN HEREON ARE SUBJECT TO THE PROVISIONS OF THE CONSTITUTION OF THE STATE OF MISSISSIPPI AND THE STATUTES THEREOF. THE PARCELS SHOWN HEREON ARE SUBJECT TO THE PROVISIONS OF THE CONSTITUTION OF THE STATE OF MISSISSIPPI AND THE STATUTES THEREOF.

**ENGINEER'S CERTIFICATE**

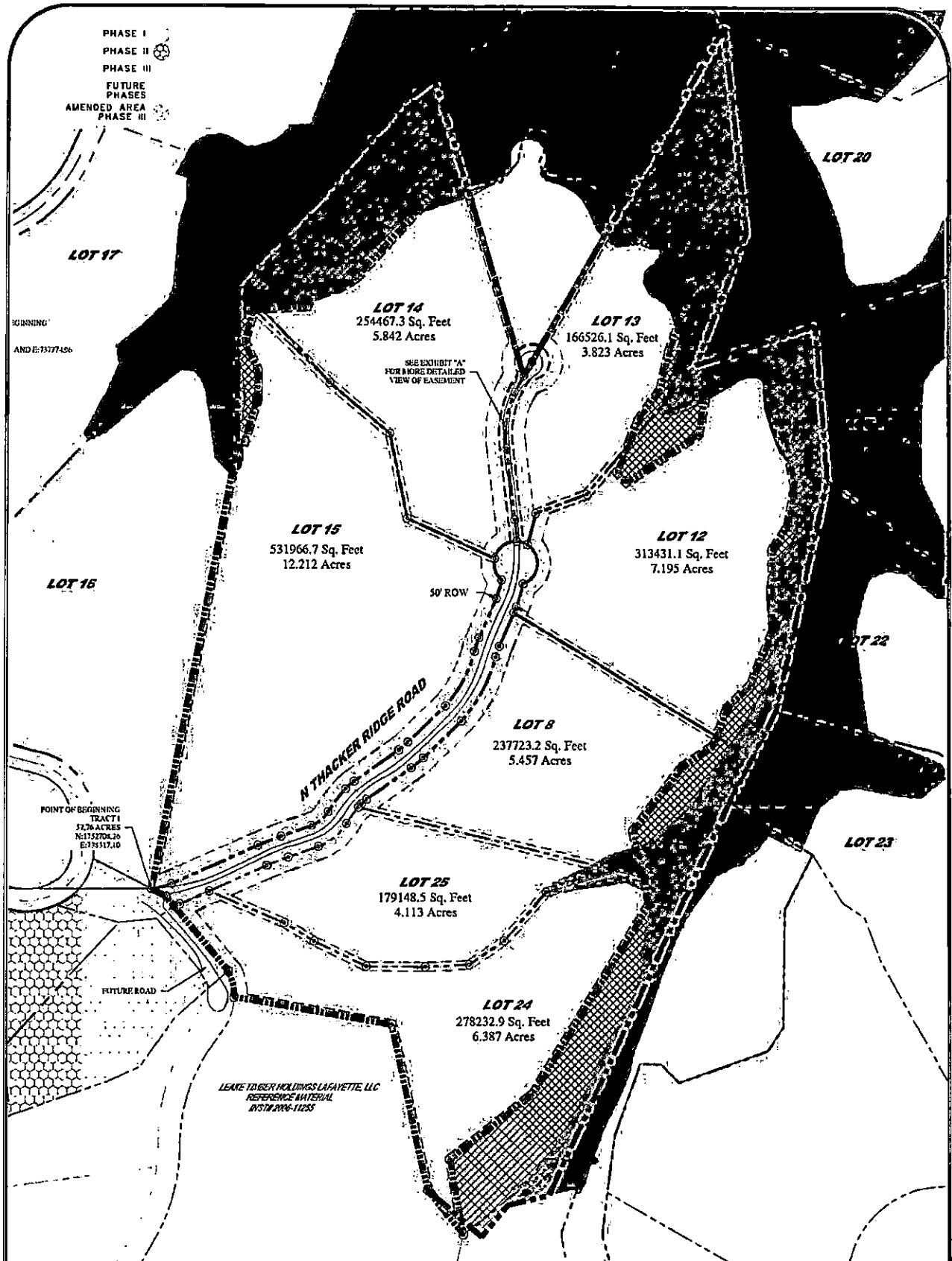
I, the undersigned, being duly qualified by law to practice as a Professional Engineer in the State of Mississippi, do hereby certify that the above described lands are the lands of the State of Mississippi and are subject to the provisions of the Constitution of the State of Mississippi and the Statutes thereof.

\_\_\_\_\_  
PROFESSIONAL ENGINEER

**SURVEYOR'S CERTIFICATE**

I, the undersigned, being duly qualified by law to practice as a Surveyor in the State of Mississippi, do hereby certify that the above described lands are the lands of the State of Mississippi and are subject to the provisions of the Constitution of the State of Mississippi and the Statutes thereof.

\_\_\_\_\_  
SURVEYOR



DATE OF REVISION	REVISION	BY
2.0		

**EXHIBIT**  
FOR  
**SPLINTER CREEK,**  
**PHASE III, AMENDEMENT 1**  
SEC. 7,8,&18 T-9-S, R-4-W, LAFAYETTE CO., MS



NO.	DATE	REVISIONS:
1		
2		
3		
4		
5		
6		
7		
8		
9		
10		