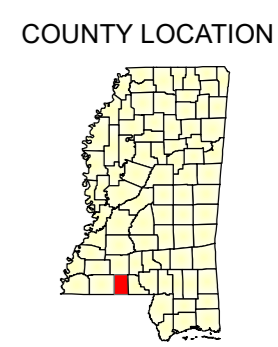
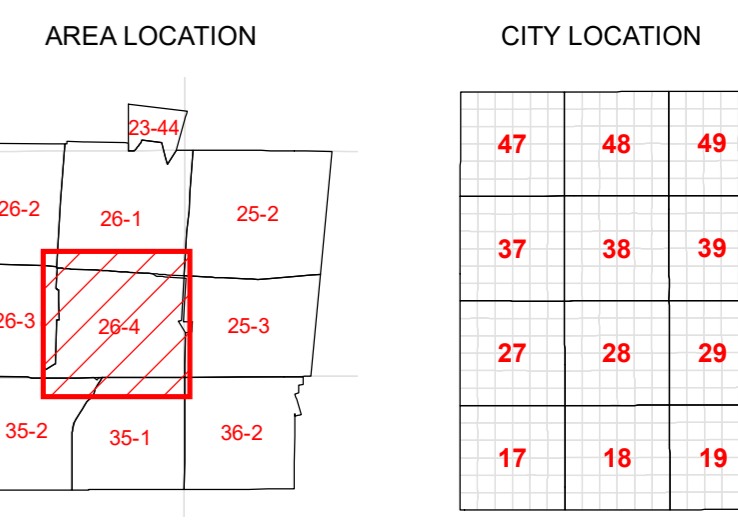


# PIKE COUNTY MISSISSIPPI OWNERSHIP MAP

IT IS NOT INTENDED FOR CONVEYANCE OR TO ESTABLISH EXACT BOUNDARY DELINEATION.

- PROPERTY LINES
- ACCESS ROAD
- COUNTY ROAD
- STATE HIGHWAY
- INTERSTATE HIGHWAY
- SECTION LINE
- NON BOUNDARY SECTION
- TOWNSHIP LINE
- RAILROAD
- CORPORATION LIMIT
- GAS or OIL LINE
- TRANSMISSION LINE
- SCHOOL DISTRICT
- HYDROGRAPHY

- INSERTS
  - MUNICIPALITIES
  - GRAVEL ROAD
  - PAVED ROAD
  - PONDS, LAKES, RIVERS
  - SEWAGE LAGOON
  - CEMETARY
  - CHURCH
  - 1/4 1/4 CORNER
  - PARCEL HOOK
- 999999 = MOBILE HOME #  
1 = BUILDING #  
9999 = MILE MARKERS



Date of Revision 1/1/2022

CITY OF SUMMIT

Print Date: 9/14/2022

SCALE 1" = 200'

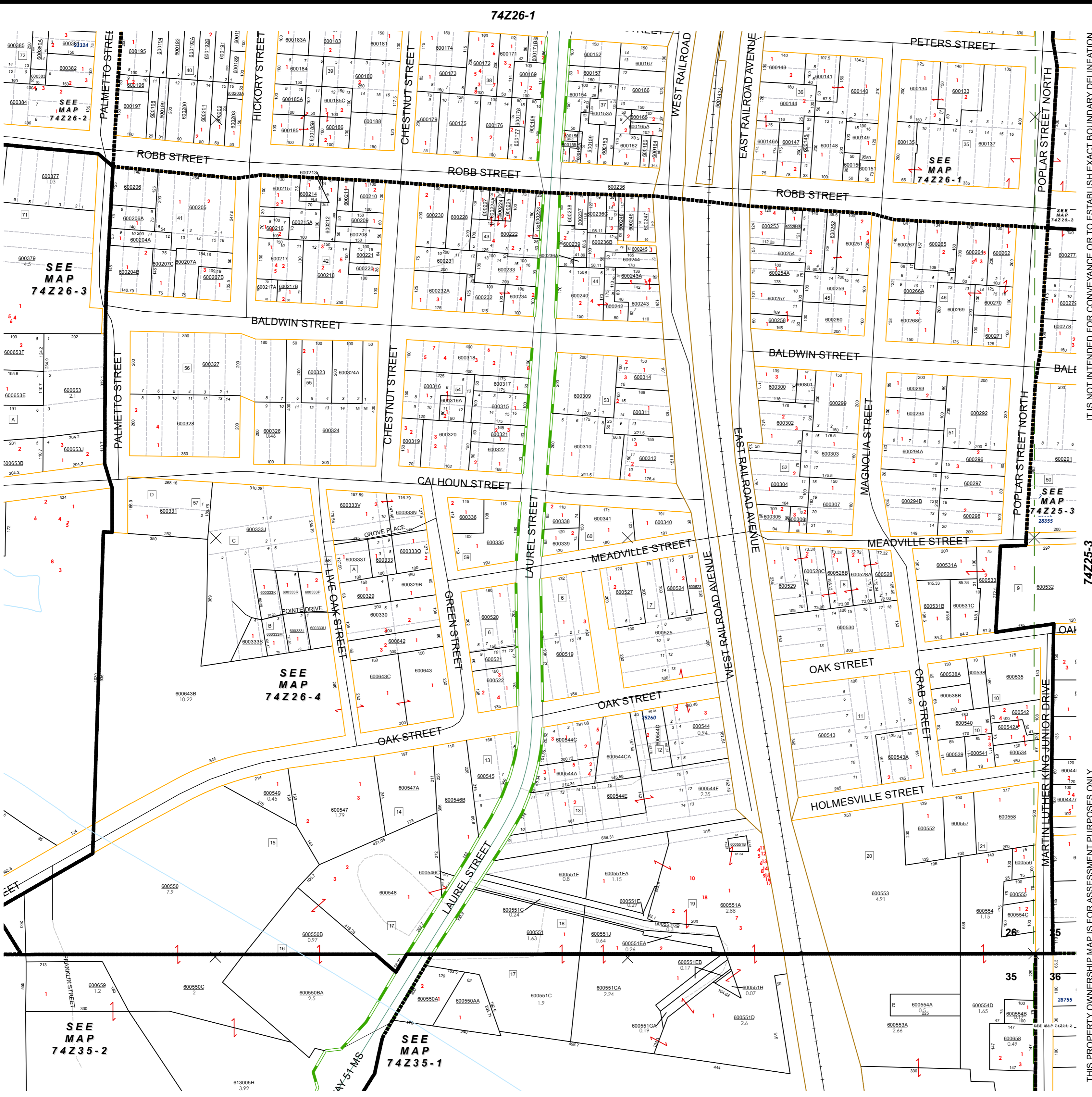
Laurie Allen  
Assessor

TOWNSHIP  
4 North

RANGE  
7 East

SECTION  
26-4

# 74Z26-4



74Z25-3

THIS PROPERTY OWNERSHIP MAP IS FOR ASSESSMENT PURPOSES ONLY

74Z26-3

74Z26-1

74Z35-1

SEE MAP  
74Z26-2

SEE MAP  
74Z26-3

SEE MAP  
74Z26-4

SEE MAP  
74Z35-2

SEE MAP  
74Z35-1

SEE MAP  
74Z26-1

SEE MAP  
74Z25-2

SEE MAP  
74Z25-3

SEE MAP  
74Z36-2

613005H  
3.92