

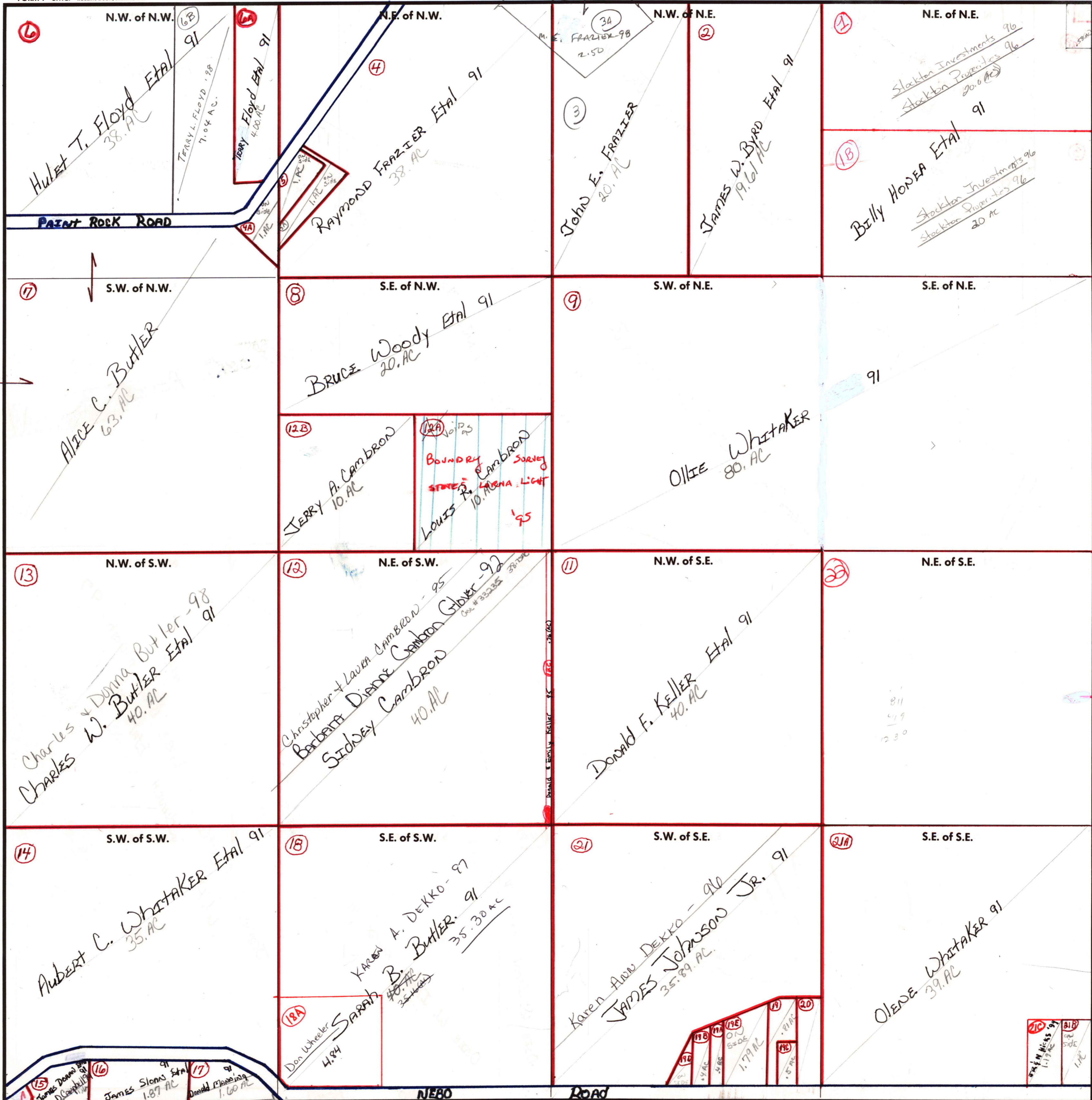
SECTION 31

TOWNSHIP 5

RANGE 3E

FORM 1-S.T.C.-ROBERTS & SON, BIRMINGHAM

- 4A John FRAZIER Etal 91 1.1 AC
- 5 John FRAZIER Etal 91 1.1 AC
- 5A John FRAZIER Etal 91 1.1 AC



CUT IN 5-22-36

CARRIED OVER FROM 6-22-6-7

COUNTY MADISON

Scale - 1 inch = 300 Ft.

19C Scott T. McKey-98

- 19 Leola Adams 91 .81 AC
- 19A Leola Adams 91 .40 AC
- 19B Leola Adams 91 .40 AC
- 19C Dean Fanning Etal 91 .50 AC
- 19D Kim Patterson 91 .60 AC
- 19E James Adams 91 1.79 AC
- 19F Maurice Gipson Etal 91 1 AC
- 19G Steve Whitaker Etal 91 1.1 AC
- 19H C.M. Jones-98 87,120 .50 AC