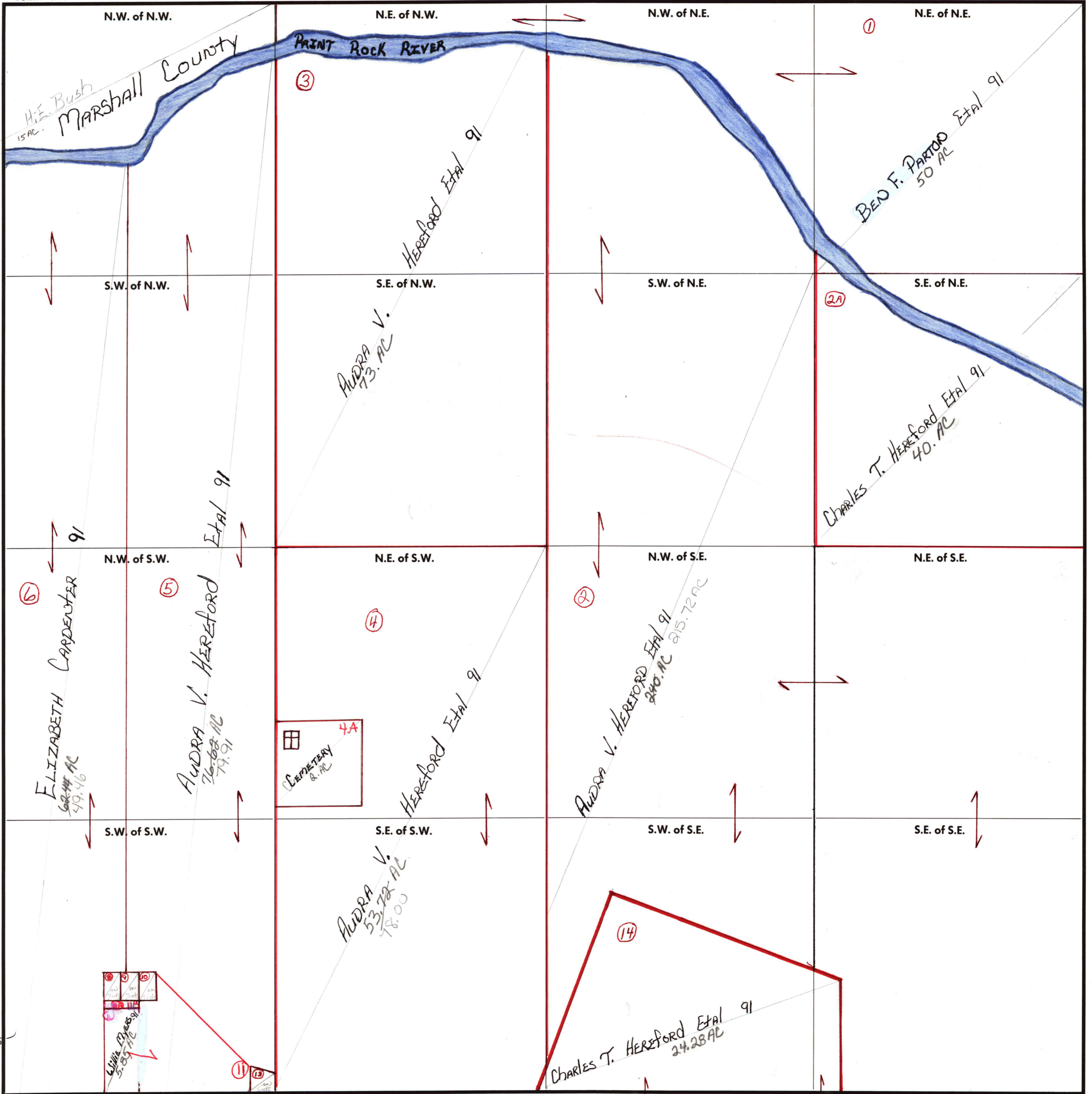


SECTION 21

TOWNSHIP 5

RANGE 3E

FORM 1-S.T.C.—ROBERTS & SON, BIRMINGHAM



- 8 James Beck Etal 91 .20 AC. Taymon 194
- 9 James Goind Etal 91 .20 AC.
- 10 Brenda Guerard Etal 91 .20 AC D.E. Jones - 93
- 13 Mildred Peoples 91 .32 AC
- 11A Delma Jones - Etal 92 .12 AC
- 11B 1/2 int w 11A

COUNTY MADISON