

SECTION 31

TOWNSHIP 5

RANGE 3E

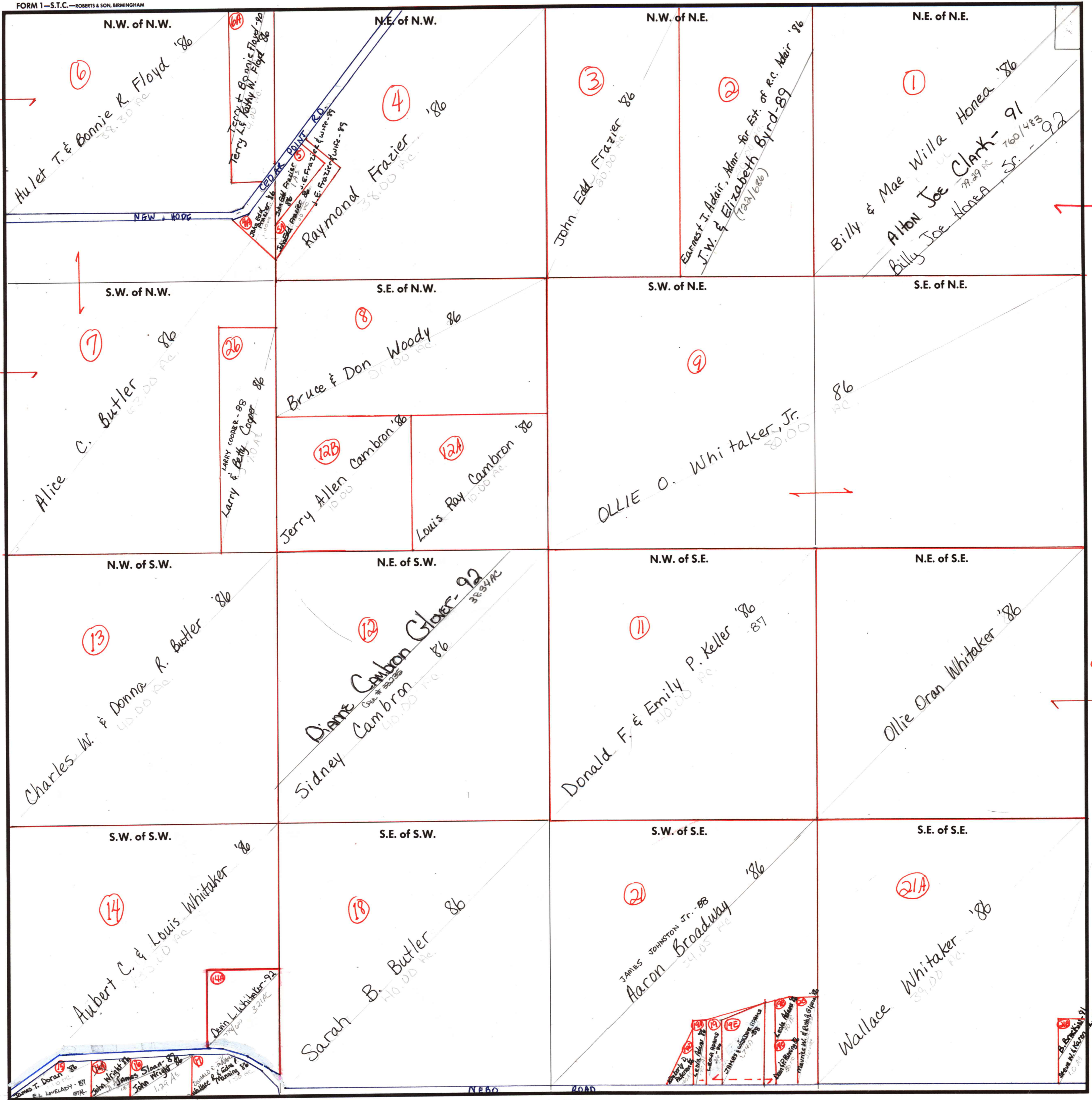
FORM 1-S.T.C.-ROBERTS & SON, BIRMINGHAM

Cont in 5-2E-36

Cont Carried into 5-3E-32

Cont in 5-2E-36

Carried in 5-3E-32



COUNTY MADISON

Scale - 1 inch = 300 Ft.

15 J.T. Doran, et ux - 90