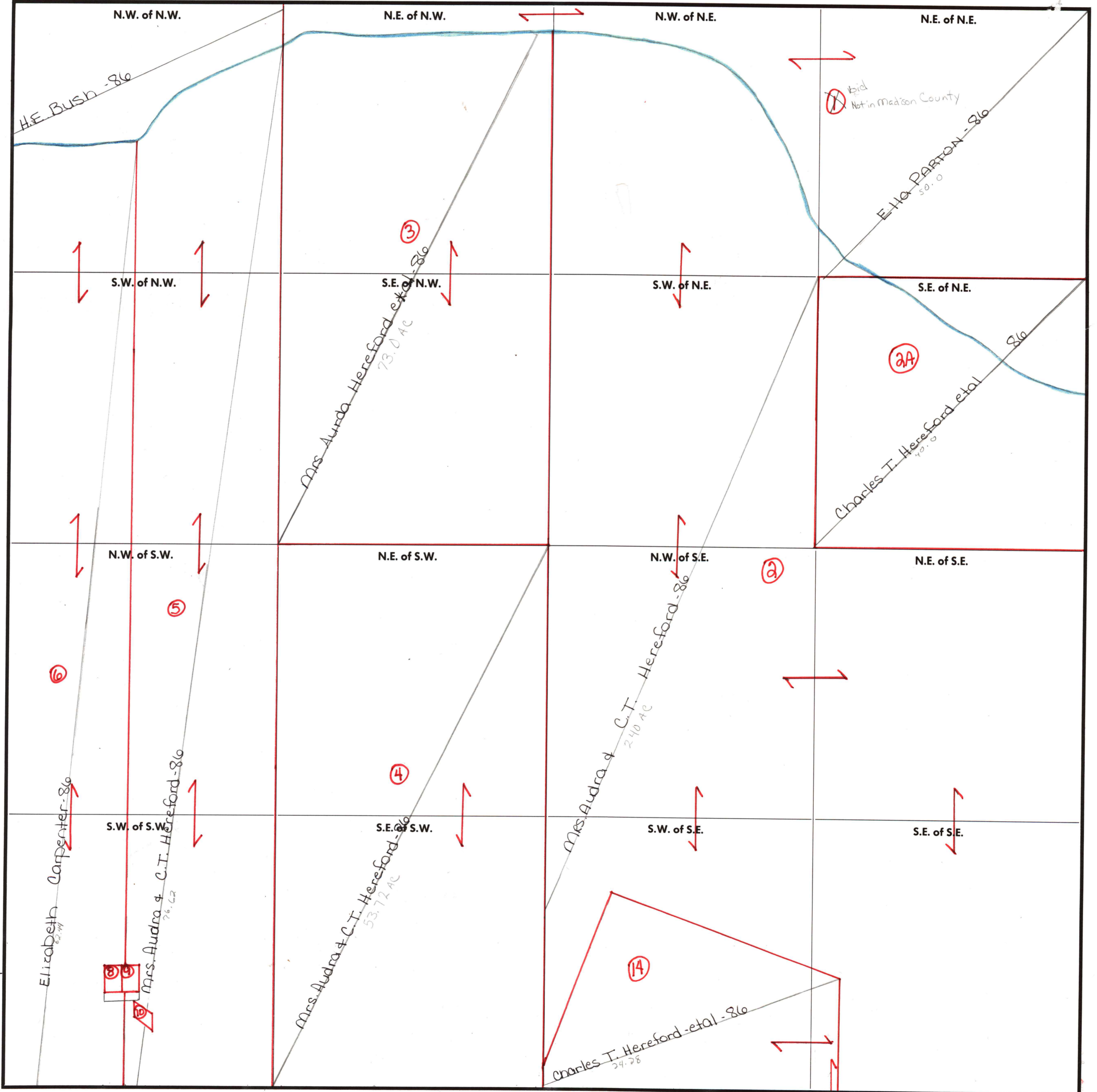


SECTION 21

TOWNSHIP 5

RANGE 3E

FORM 1—S.T.C.—ROBERTS & SON, BIRMINGHAM



COUNTY MADISON

Scale — 1 inch = 300 Ft.

CONF. 11 5-28-28

- 8 JAMES + Linda Beck 86 .20 AC
- 9 JAS L GOIN, et al .20 86
- 10 GUERIN Brenda + Tommy Wayne 20 AC 86

Elizabeth Carpenter - 86

Mrs. Audra + C.T. Hereford - 86 76.62

Mrs. Audra + C.T. Hereford - 86 53.72 AC

Mrs. Audra Hereford et al - 86 73.0 AC

Mrs. Audra + C.T. Hereford - 86 240 AC

bid Not in Madison County

E.H. PARTON - 86 50.0

Charles T. Hereford et al 40.0

Charles T. Hereford et al - 86 24.28