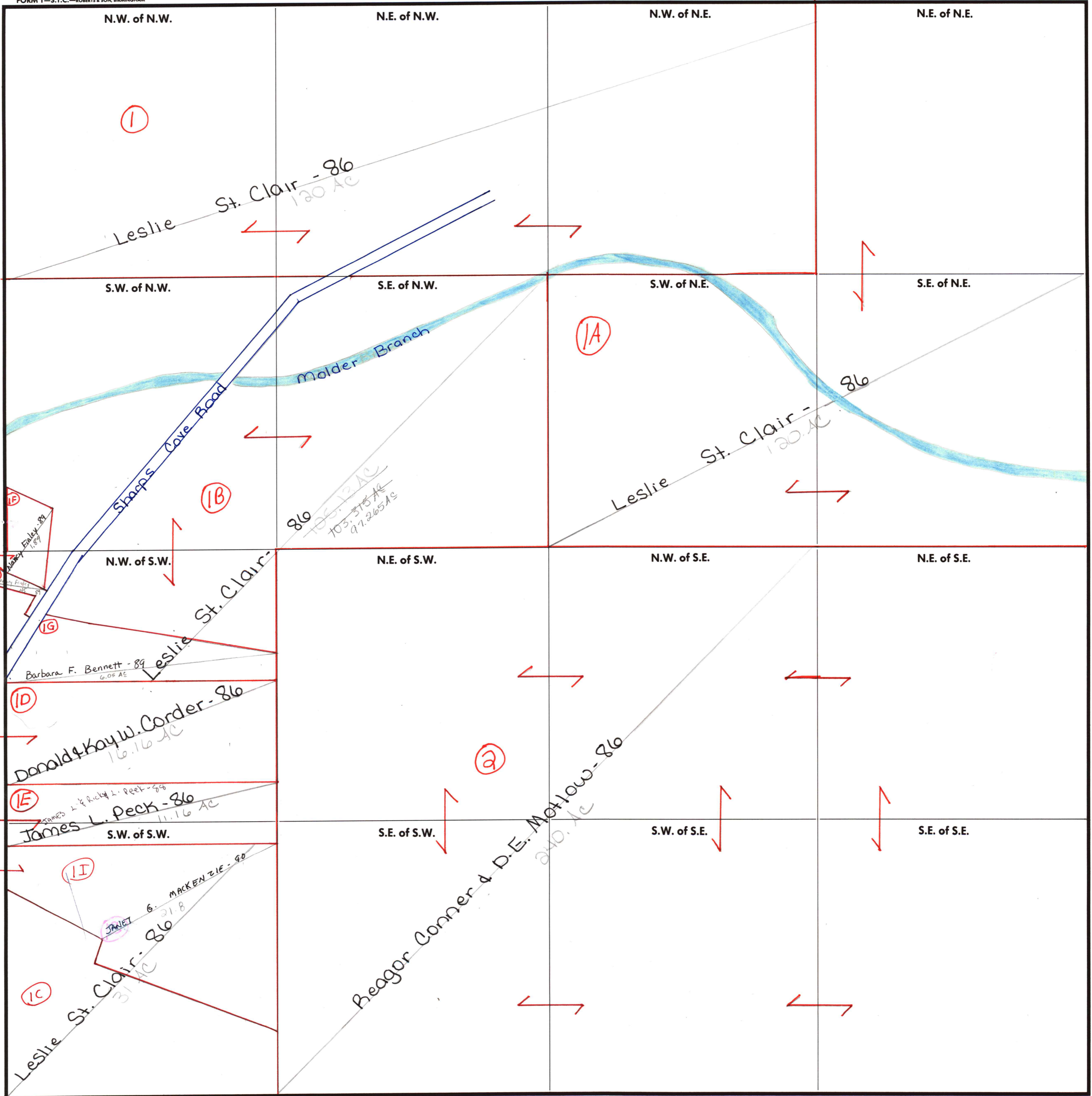


FORM 1-S.T.C.—ROBERTS & SON, BIRMINGHAM



Acreage Continued in 2-2E-36

Acreage Continued in 2-2E-36

Acreage Continued in 2-2E-36

cont in 2-2E-36

Leslie St. Clair - 86
120 AC

1A

1B

Barbara F. Bennett - 89
6.09 AC

1D

1E

1I

1C

2

Beagor Conner & D.E. Morrow - 86
240 AC

Donald & Kay W. Corder - 86
16.16 AC

James L. Peck - 86
11.16 AC

Janet Mackenzie - 90
21.8 AC

Leslie St. Clair - 86
31 AC

86
105.12 AC
103.315 AC
97.265 AC

N.W. of N.W.

N.E. of N.W.

N.W. of N.E.

N.E. of N.E.

S.W. of N.W.

S.E. of N.W.

S.W. of N.E.

S.E. of N.E.

N.W. of S.W.

N.E. of S.W.

N.W. of S.E.

N.E. of S.E.

S.W. of S.W.

S.E. of S.W.

S.W. of S.E.

S.E. of S.E.