

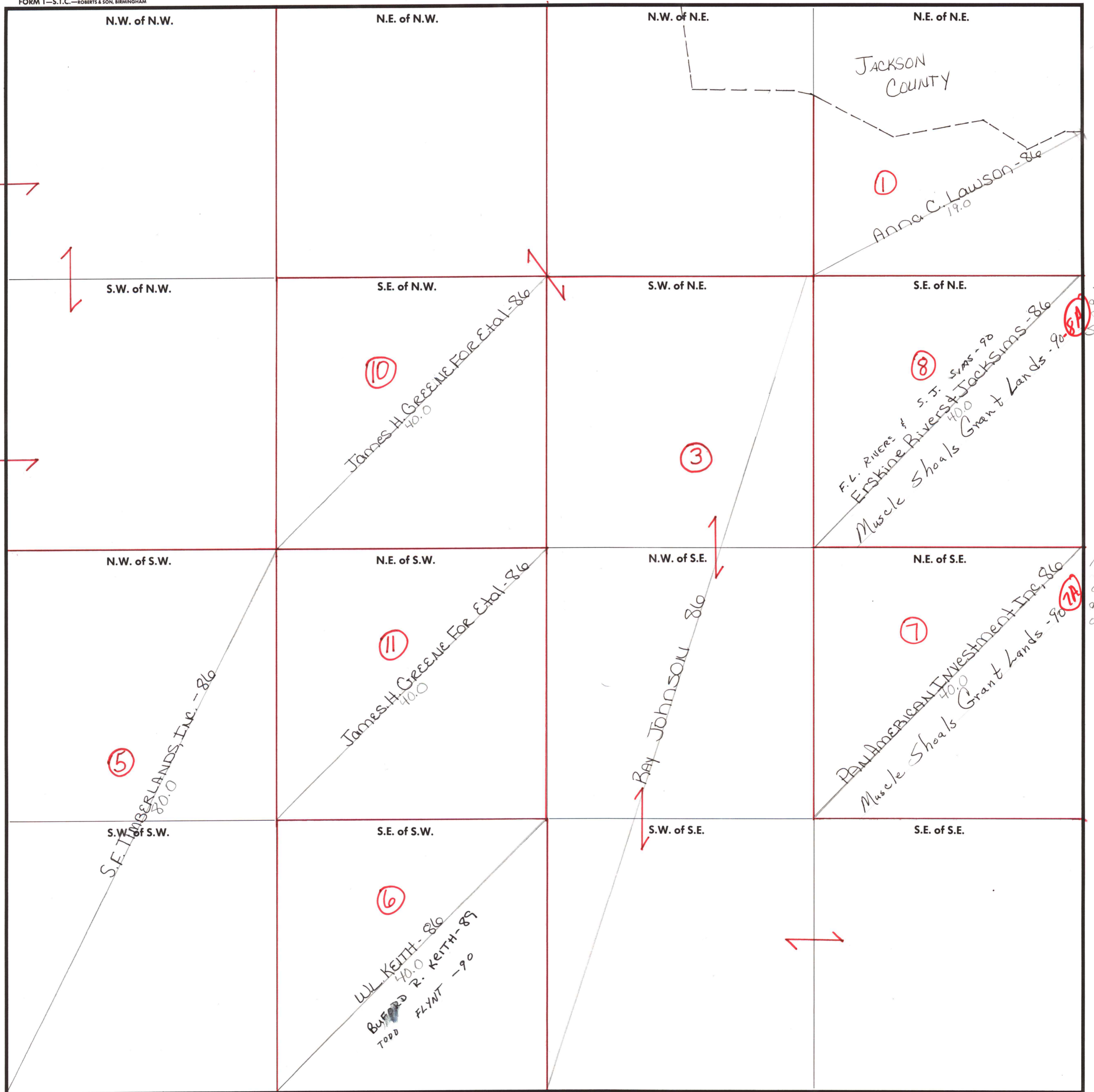
52  
5-28-87

SECTION 9

TOWNSHIP 1

RANGE 3E

FORM 1-S.T.C.-ROBERTS & SON, BIRMINGHAM



Cont. in 1-3E-4

SE 1/4 of NE 1/4  
double assessed  
accord to  
st of AL

NE 1/4 of SE 1/4  
double  
assessed  
accord to st  
of AL

COUNTY MADISON

Scale - 1 inch = 300 Ft.