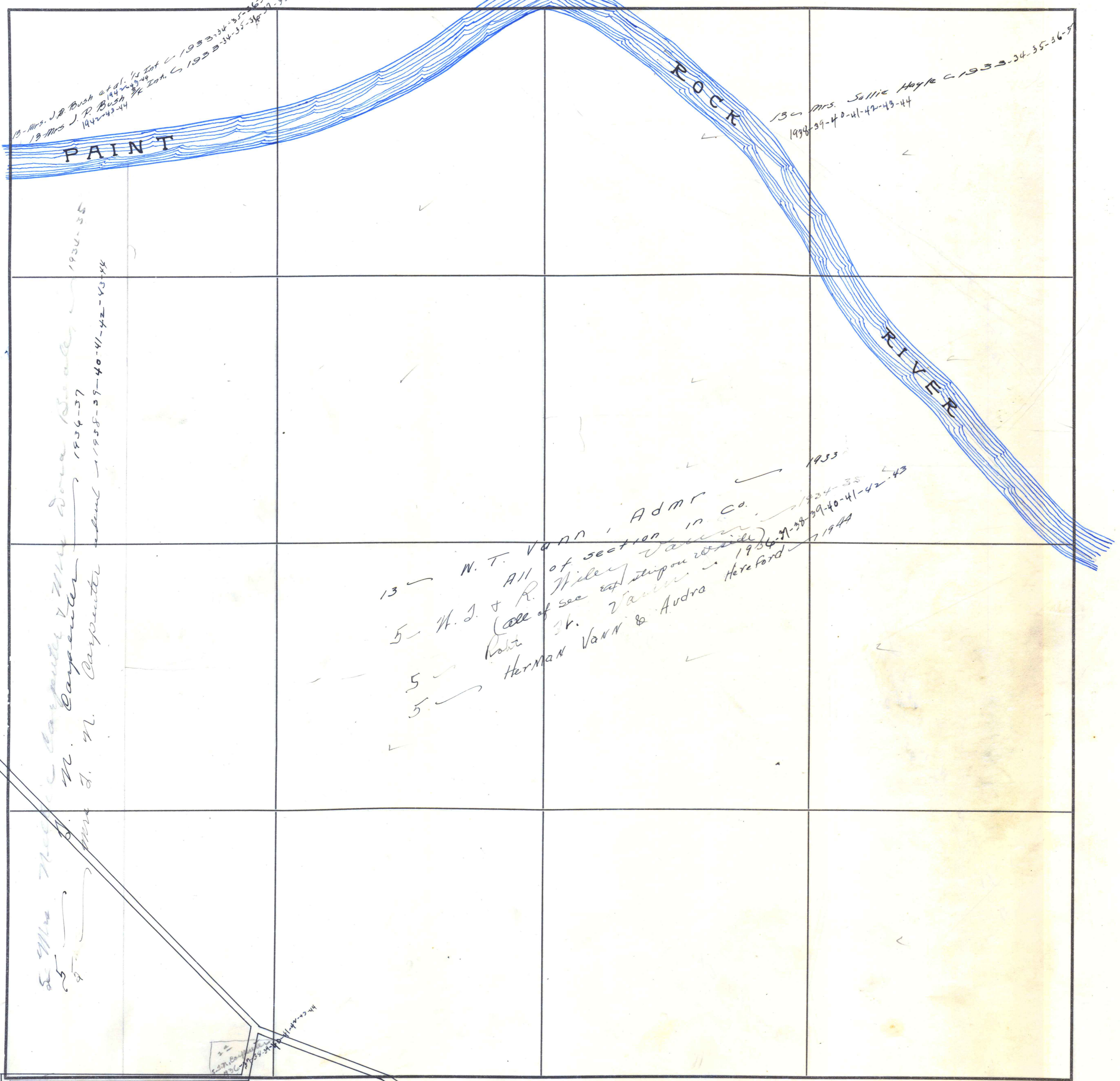


SECTION 21

TOWNSHIP 5

RANGE 3, E.



13 - Mrs. J. D. Bush et al. 1/4 Int. C. 1933-34-35-36-37-38-39-40-41  
 19 Mrs. J. D. Bush 1/4 Int. C. 1933-34-35-36-37-38-39-40-41  
 14 Mrs. J. D. Bush 1/4 Int. C. 1933-34-35-36-37-38-39-40-41

13 - Mrs. Sallie Hagle C. 1933-34-35-36-37  
 1934-39-40-41-42-43-44

1934-35  
 1934-37  
 1938-39-40-41-42-43-44  
 Mrs. J. M. Carpenter  
 Mrs. J. M. Carpenter

13 - W. T. Vann, Admr  
 5 - H. J. & R. Wiley (all of sec. 13 on west side)  
 5 - Robt. Vann  
 5 - Herman Vann & Audra Hereford  
 1933  
 1934-38  
 1934-39-40-41-42-43  
 1944

COUNTY \_\_\_\_\_

Scale-300 Ft.=1 inch