

SECTION 22

TOWNSHIP 3

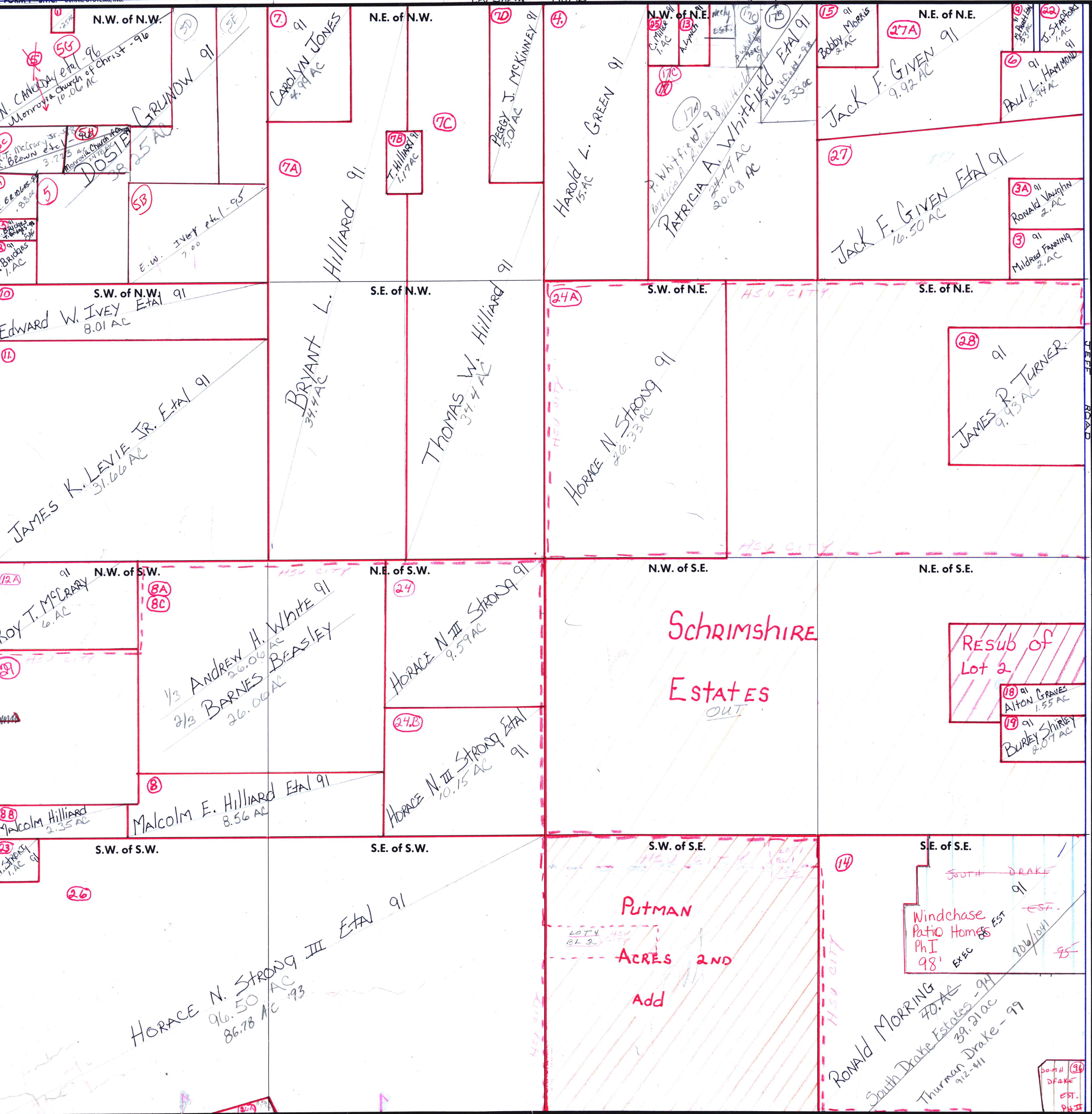
RANGE 2 W

MUN 02 - HSV CITY

(178) P.A. Rivers Whitfield 91

CAPSHAW ROAD

FORM 1 - S.T.C. - CURRIE SYSTEMS, INC.



COUNTY MADISON

Scale - 1 inch = 300 Ft.

(26A) HORACE STRONG 91
11.50 AC .58 AC '93

HYDA BARNES 9/3
DOLIE GRUNOW 1/3
.35 AC

(5A) R.T. McCrary
R. Brown etc
3.77 AC
Monrovia Church
DOLIE GRUNOW
38.25 AC
(5B) E.W. Ivey et al - 95
7.00
(5C) T. BARNES
1.4 AC

(8A) (8B)
(8C) (8D)
(8E) (8F)
(8G) (8H)
(8I) (8J)
(8K) (8L)
(8M) (8N)
(8O) (8P)
(8Q) (8R)
(8S) (8T)
(8U) (8V)
(8W) (8X)
(8Y) (8Z)

(26) (27) (28) (29) (30) (31) (32) (33) (34) (35) (36) (37) (38) (39) (40) (41) (42) (43) (44) (45) (46) (47) (48) (49) (50) (51) (52) (53) (54) (55) (56) (57) (58) (59) (60) (61) (62) (63) (64) (65) (66) (67) (68) (69) (70) (71) (72) (73) (74) (75) (76) (77) (78) (79) (80) (81) (82) (83) (84) (85) (86) (87) (88) (89) (90) (91) (92) (93) (94) (95) (96) (97) (98) (99) (100)