

SE 1/4 (Parcels not to scale)

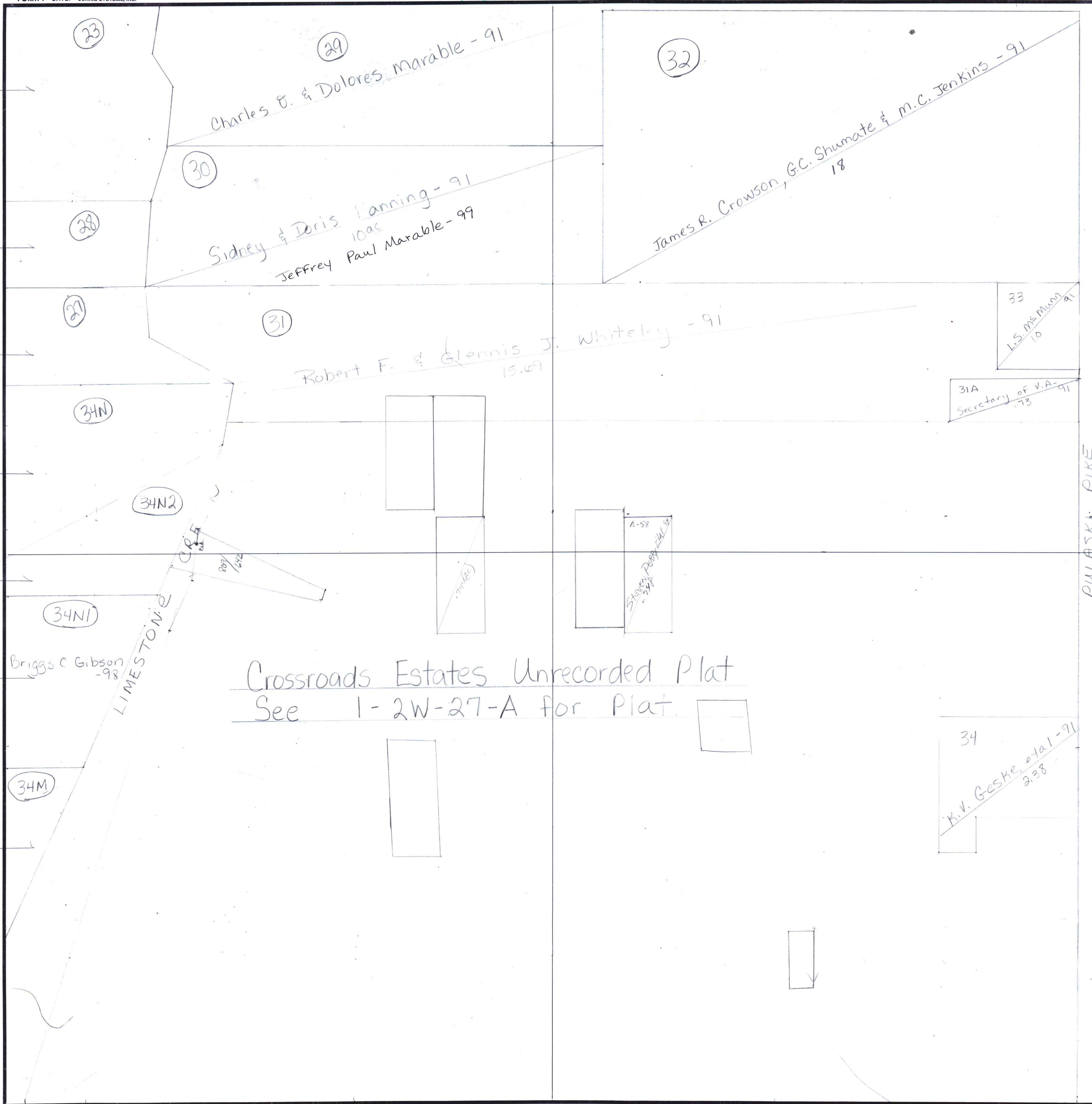
SECTION 27

TOWNSHIP 1

RANGE 2W

FORM 1-S.T.C.-CURRIE SYSTEMS, INC.

MUNICIPALITY MADISON CO



Parcel 34V Deleted  
County Road  
Parcel 34V  
To Madison County  
9.40 ac  
for Comet Dr And  
Jamie Lane