

cont. in Edgewater S/D lot 5

Map 02 - July 1988

NOTE: All of Lady Ann Lake in this section carried on #1B for 87M.

(1B) Edgewater Homeowner's Assoc. 80.58 acres

Jr. #16 12/1/88

SECTION

27

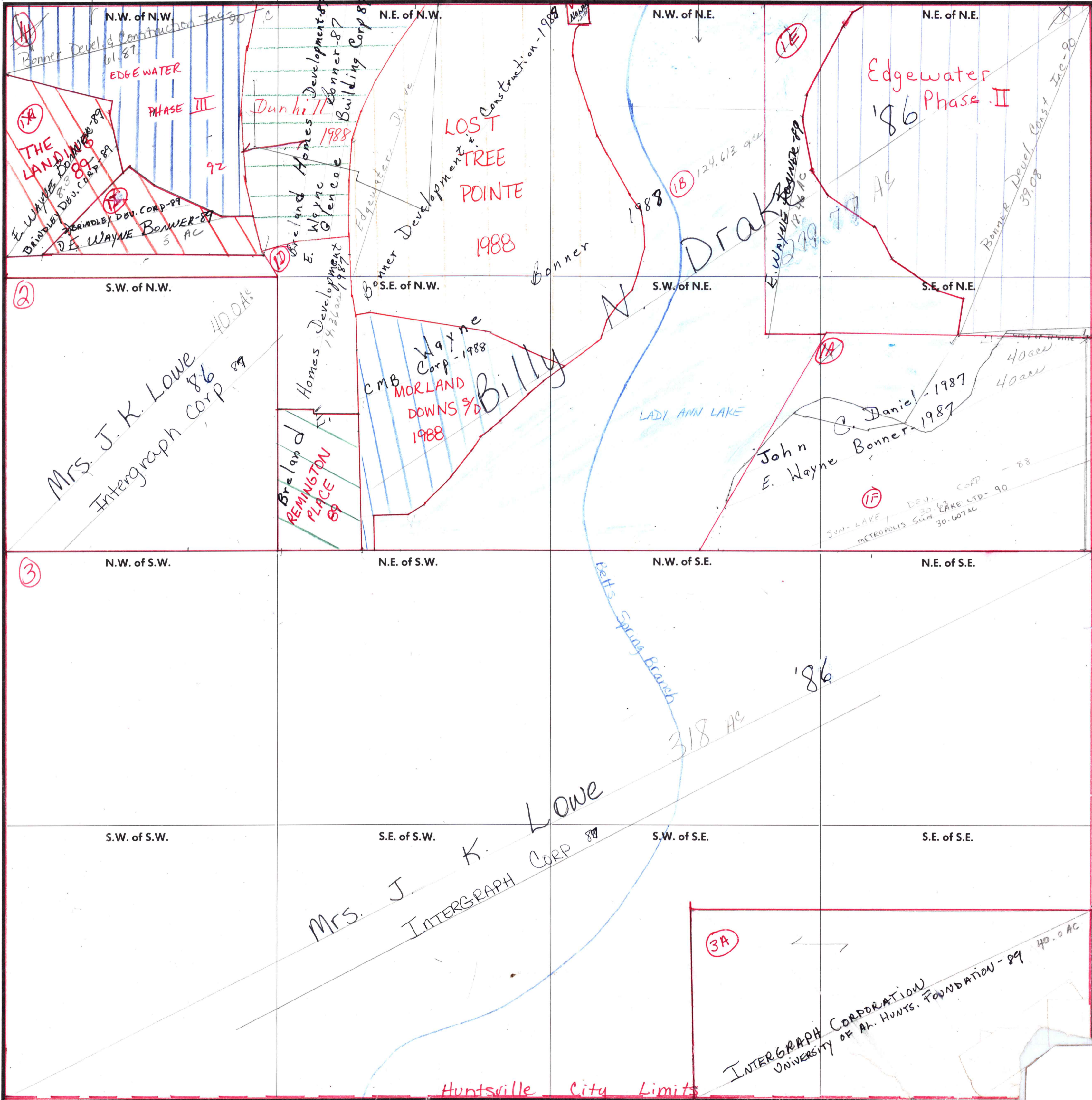
TOWNSHIP

4

RANGE

2W

FORM 1-S.T.C.—ROBERTS & SON, BIRMINGHAM



COUNTY MADISON

Scale - 1 inch = 300 Ft.