

SECTION

5

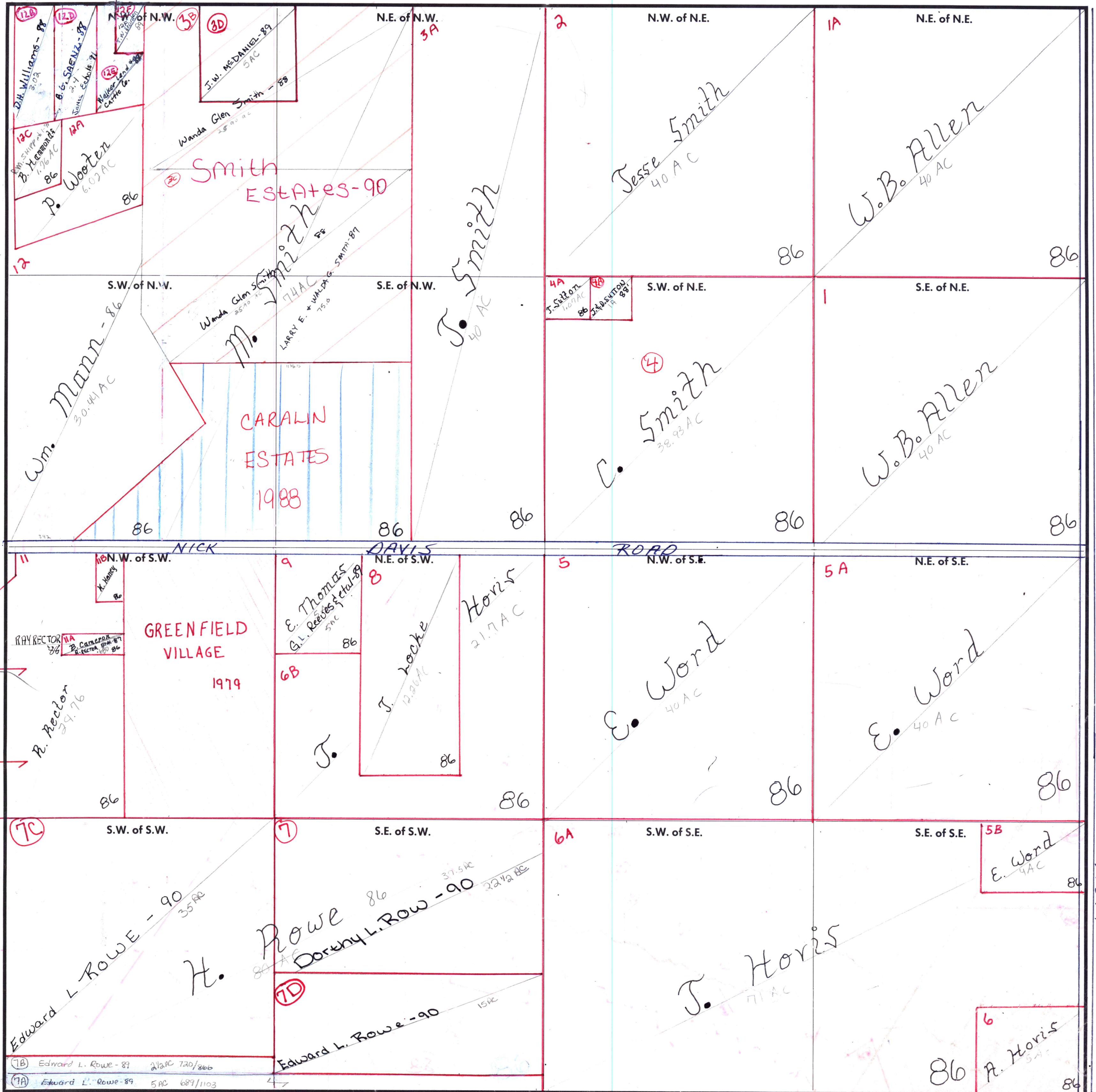
TOWNSHIP

3

RANGE

2W

FORM 1-S.T.C.-ROBERTS & SON, BIRMINGHAM



★ Carried in 3-2W - Sec 6

(7B) Edward L. Rowe - 89 2 1/2 AC 720/806
 (7A) Edward L. Rowe - 89 5 AC 687/1103

COUNTY MADISON

Scale - 1 inch = 300 Ft.