

SECTION

28

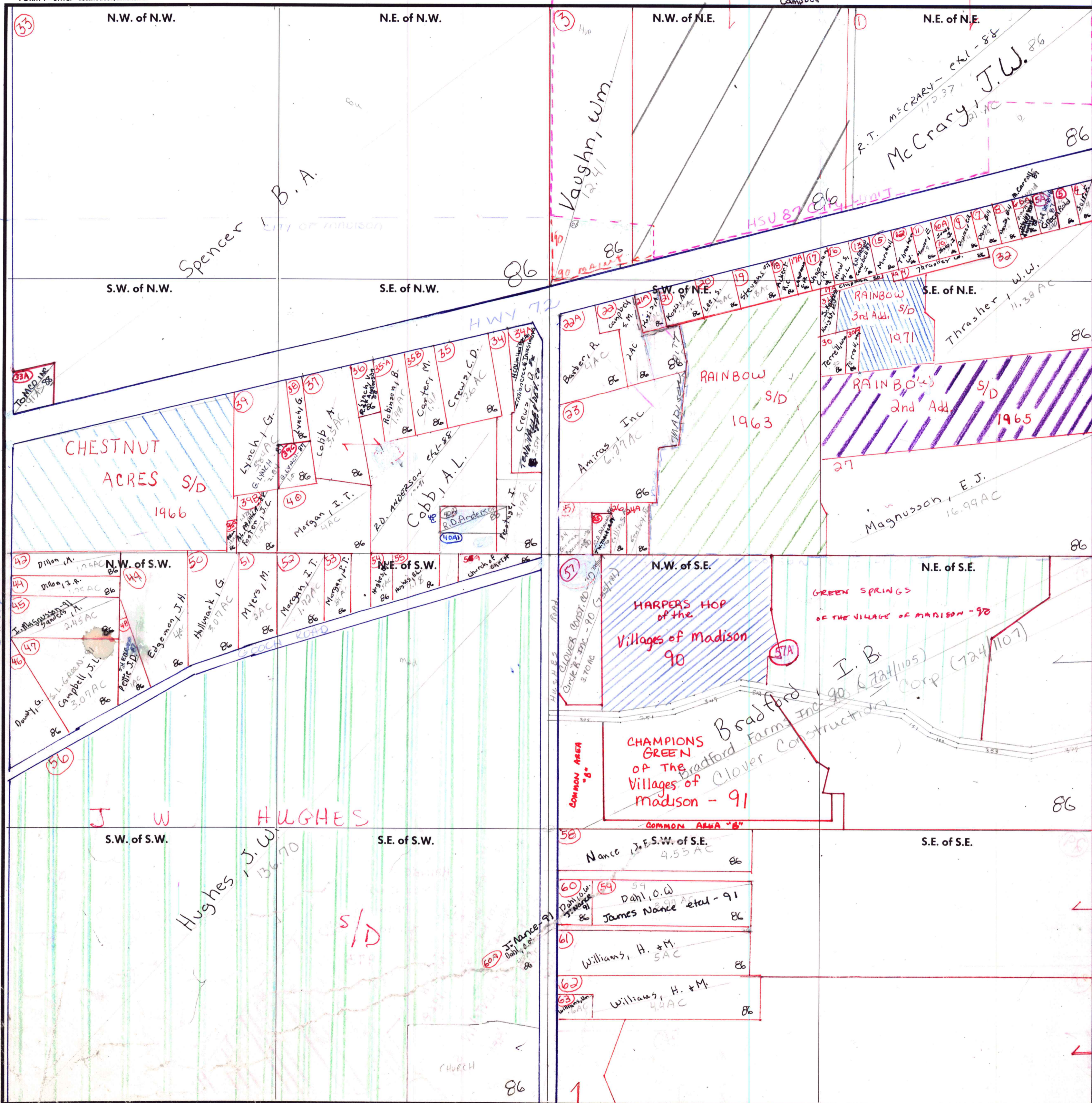
TOWNSHIP

3

RANGE

2W

FORM 1—S.T.C.—ROBERTS & SON, BIRMINGHAM



Carried in 3-2W-27
Sarah McCrary
Campbell

Spencer B.A.

Vaughn, Wm.

R.T. McCrary - et al - 88
McCrary J.W. 86

Beverly Brown 88

CHESTNUT ACRES S/D 1966

RAINBOW S/D 1963

RAINBOW S/D 1965

HARPERS HOP OF THE VILLAGES OF MADISON 90

CHAMPIONS GREEN OF THE VILLAGES OF MADISON - 91

HUGHES S/D

CONT IN SEC. 27

Carried in 3-2W-27
Jimmy Johnson

Carried in 3-2W-27
Stone Ridge S/D
1985

COUNTY MADISON

Scale - 1 inch = 300 Ft.

Carried in 3-2W-33
Stone Ridge S/D 1979