

SECTION

27

TOWNSHIP

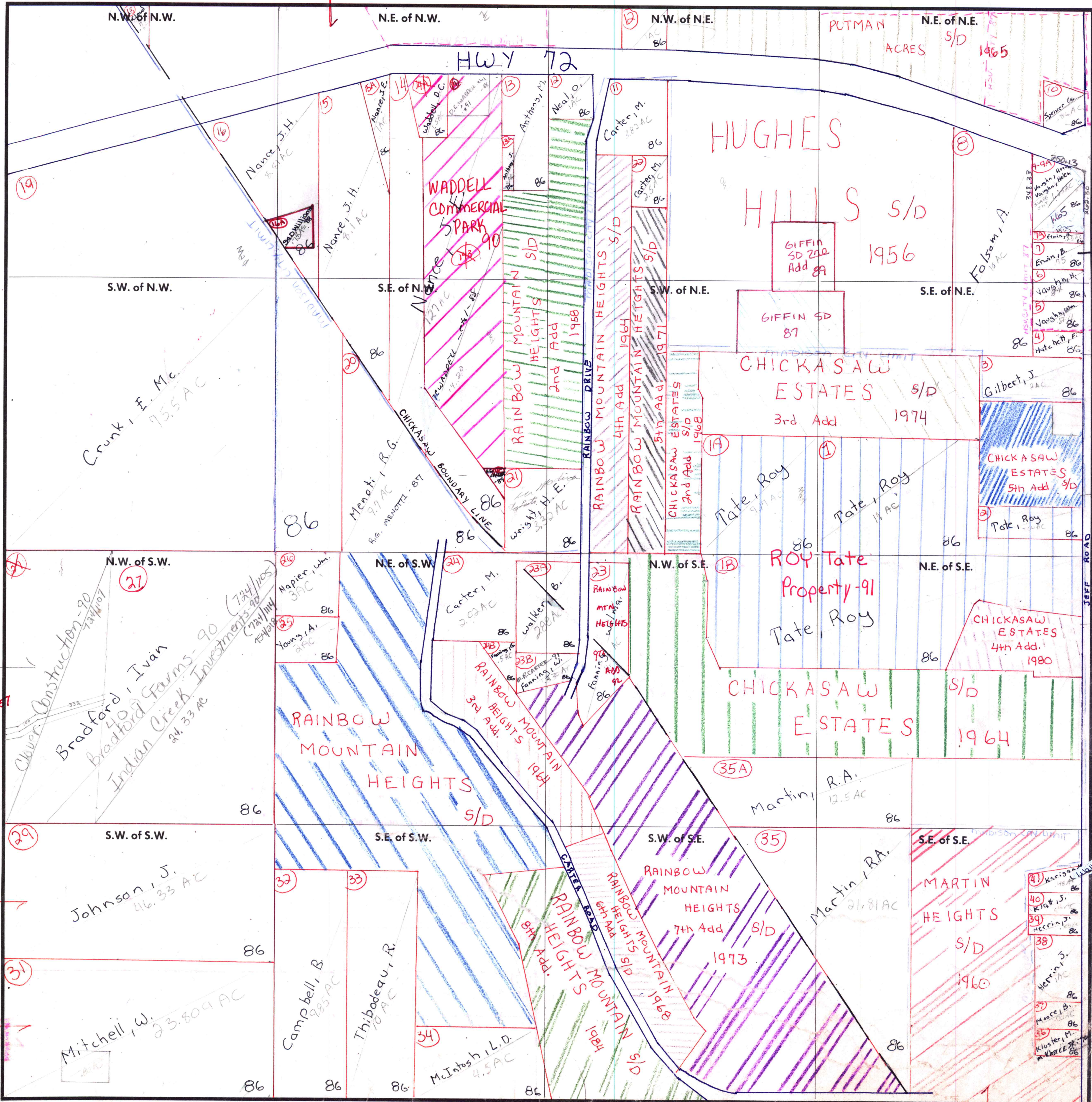
3

RANGE

2W

FORM 1-S.T.C.-ROBERTS & SON, BIRMINGHAM

Extends into 3-2W-28



COUNTY MADISON

Scale - 1 inch = 300 Ft.

Parcel for Martin Heights found in 3-2W-34

Cont in Sec 28
3-2W-28-K-57

Extends in 3-2W-28

9 Edwin Vaughn
A Partnership
1/2 int
7A V. Erwin, H.
Vaughn, R. Vaughn
1/2 int
1/2 int
V. Erwin - 89

1640 Sl...
1770 Sl...

41 Karis...
40 Klat J.
39 Herring
38 Herring J.
37 Moore B.
36 Kloster, M.
35 Kloster, M.