

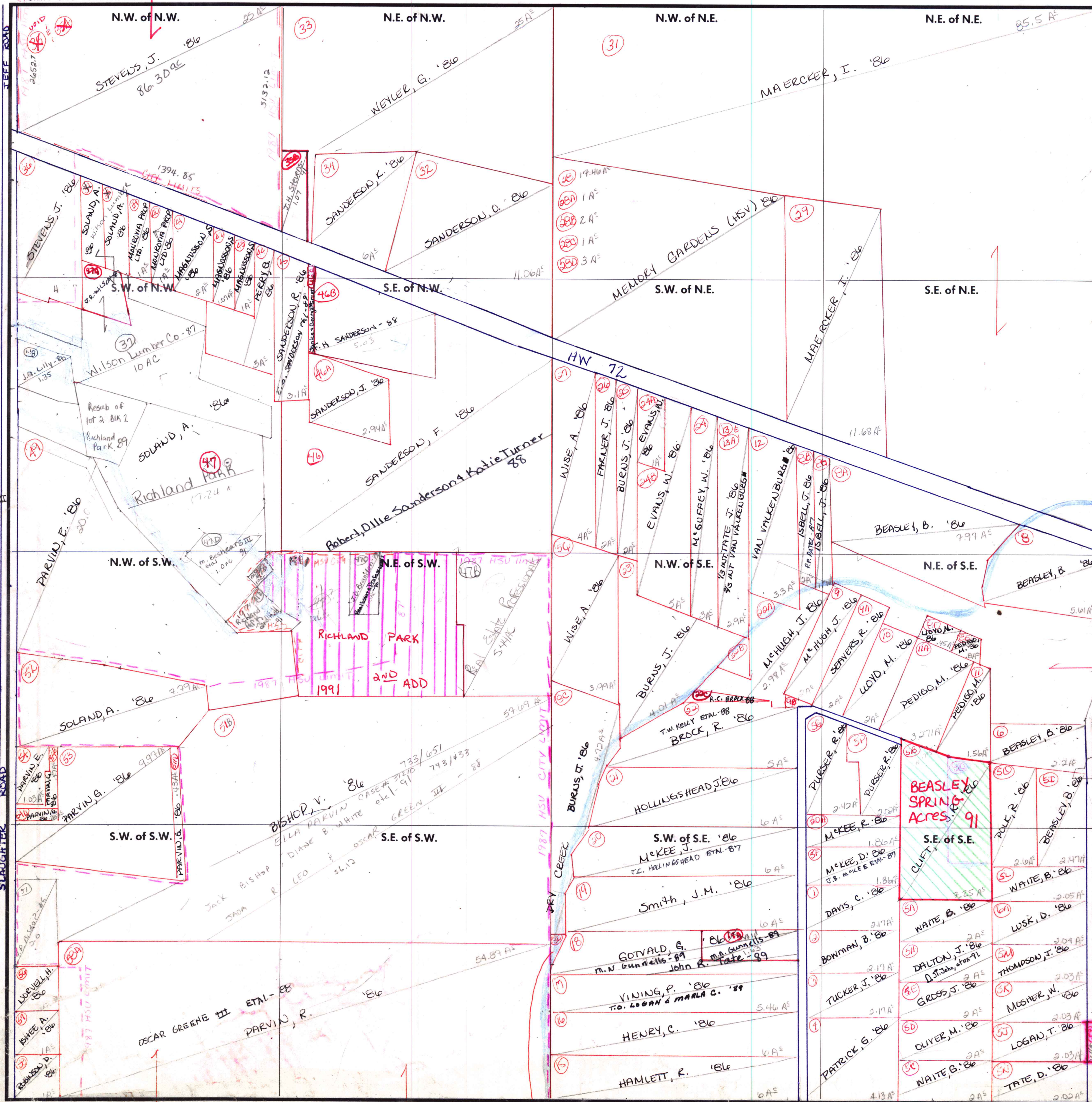
SECTION 26

TOWNSHIP 3

RANGE 2W

CARRIED IN
3-2W-23-21

FORM 1-S.T.C.—ROBERTS & SON, BIRMINGHAM



Sec Parcel 39-25-3-21

- (98) MCHUGH, J. '86 .08 A²
- (200) BROCK, R. '86 .27 A²
- (202) MCHUGH, J. '86

(59) HENRY SCHEWER
92. .11 AC

COUNTY MADISON

Scale - 1 inch = 300 Ft.

- (80) GOTVALD, G. '86 .11 A²
- m. n. Gunnells - 89 (720/20)
- J. R. Tate - 89 (720/22)

COUNTY MADISON