

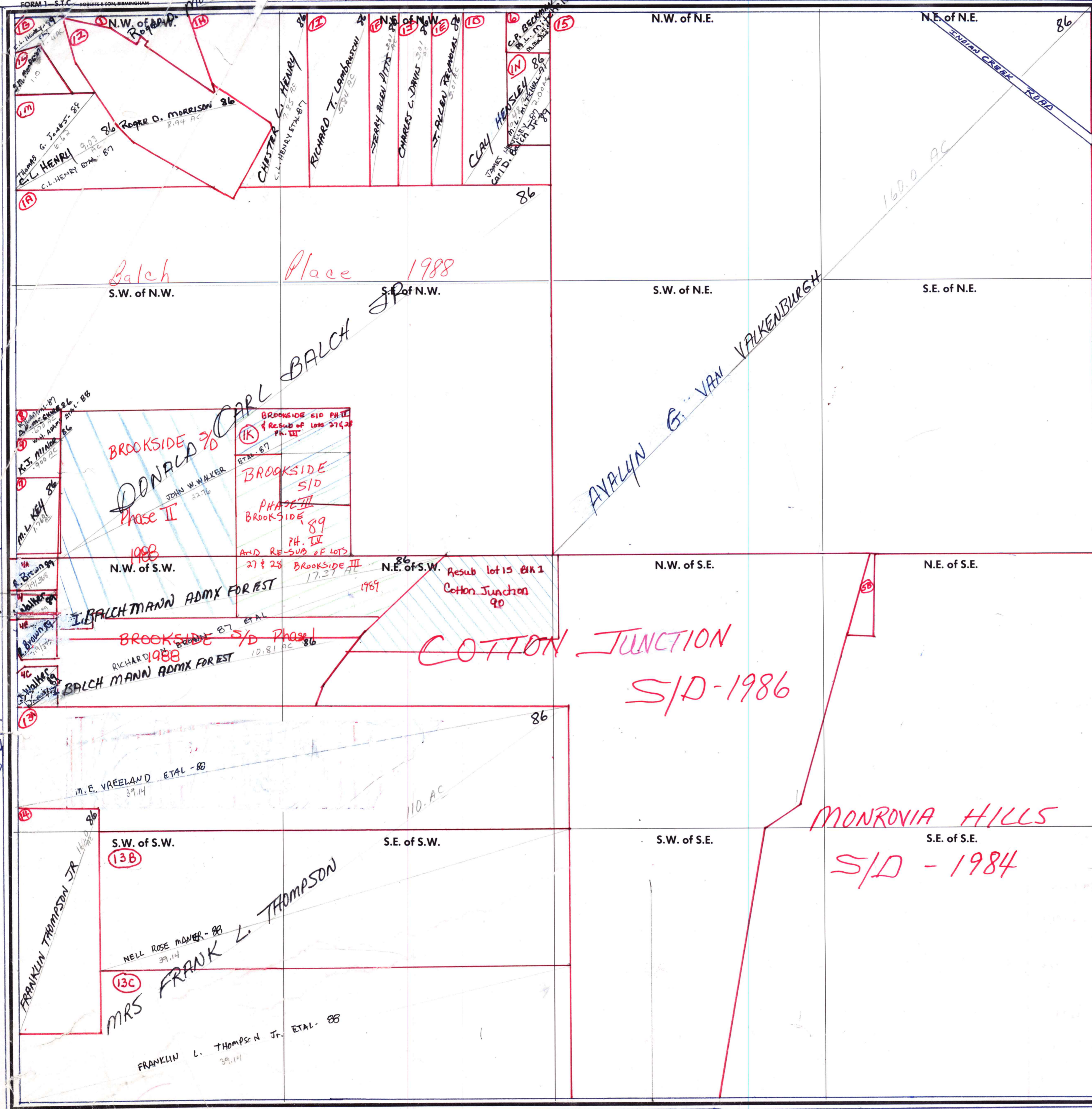
SECTION 2

TOWNSHIP KELLY SPRING ROAD

RANGE 2W

3

FORM 1 - S.T.C. ROBERTS & SON, BIRMINGHAM



50 Richard N. Brown 86 1/2 INT  
 G. N. BROWN 86 1/2 INT  
 John W. Walker 86 1/2 INT  
 .51 AC