

SECTION 13

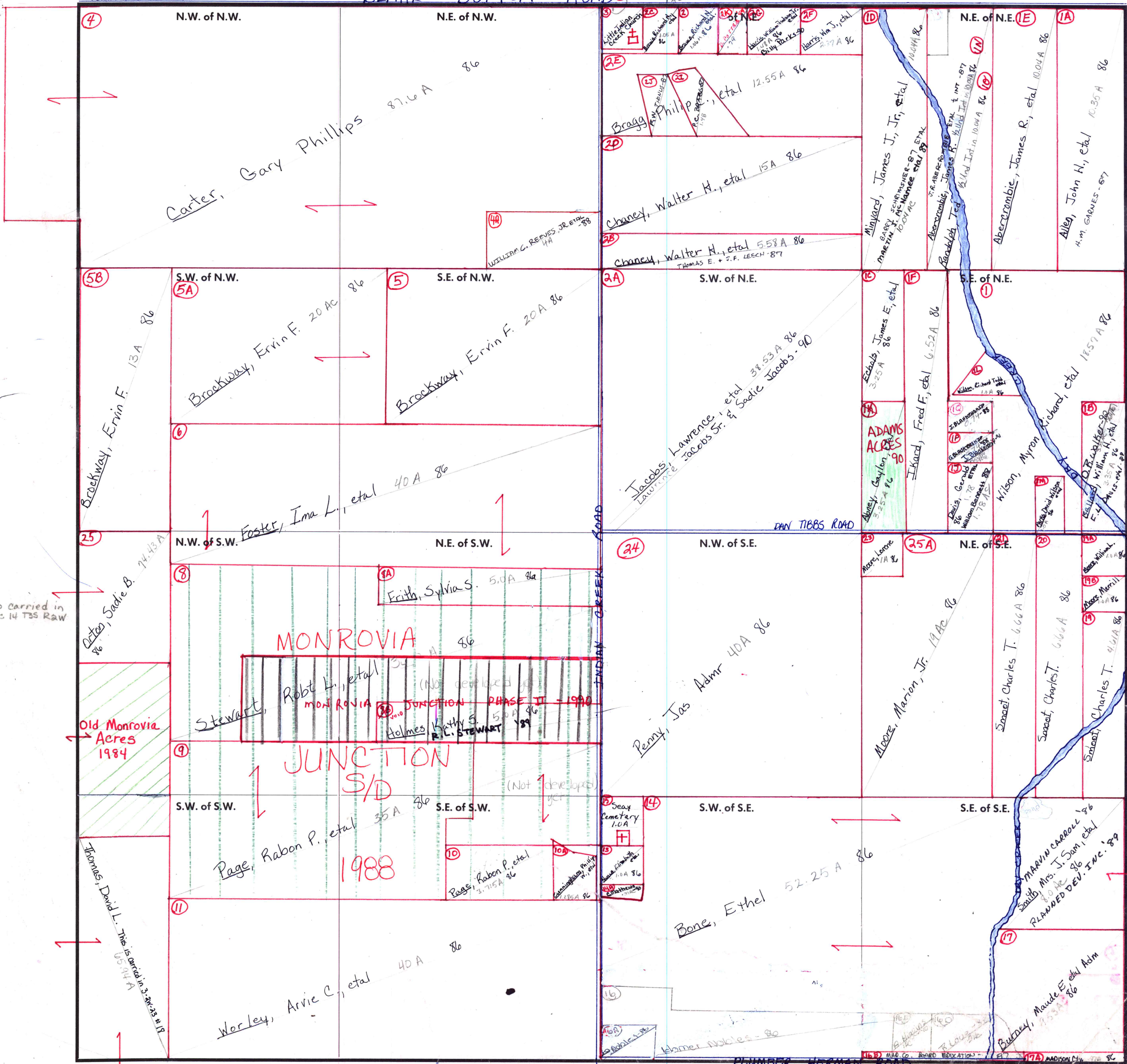
TOWNSHIP 3

RANGE 2W

BLAKE BOTTOM ROAD

Johnson - 89 Scrutcher - 90
Rebecca Gay Phillips Carter 88

FORM 1 - S.T.C. - ROBERTS & SON, BIRMINGHAM



Also carried in Sec. 14 T35 R2W

Old Monrovia Acres 1984

COUNTY MADISON

Scale - 1 inch = 300 Ft.

Carried in 3-11-18-40

