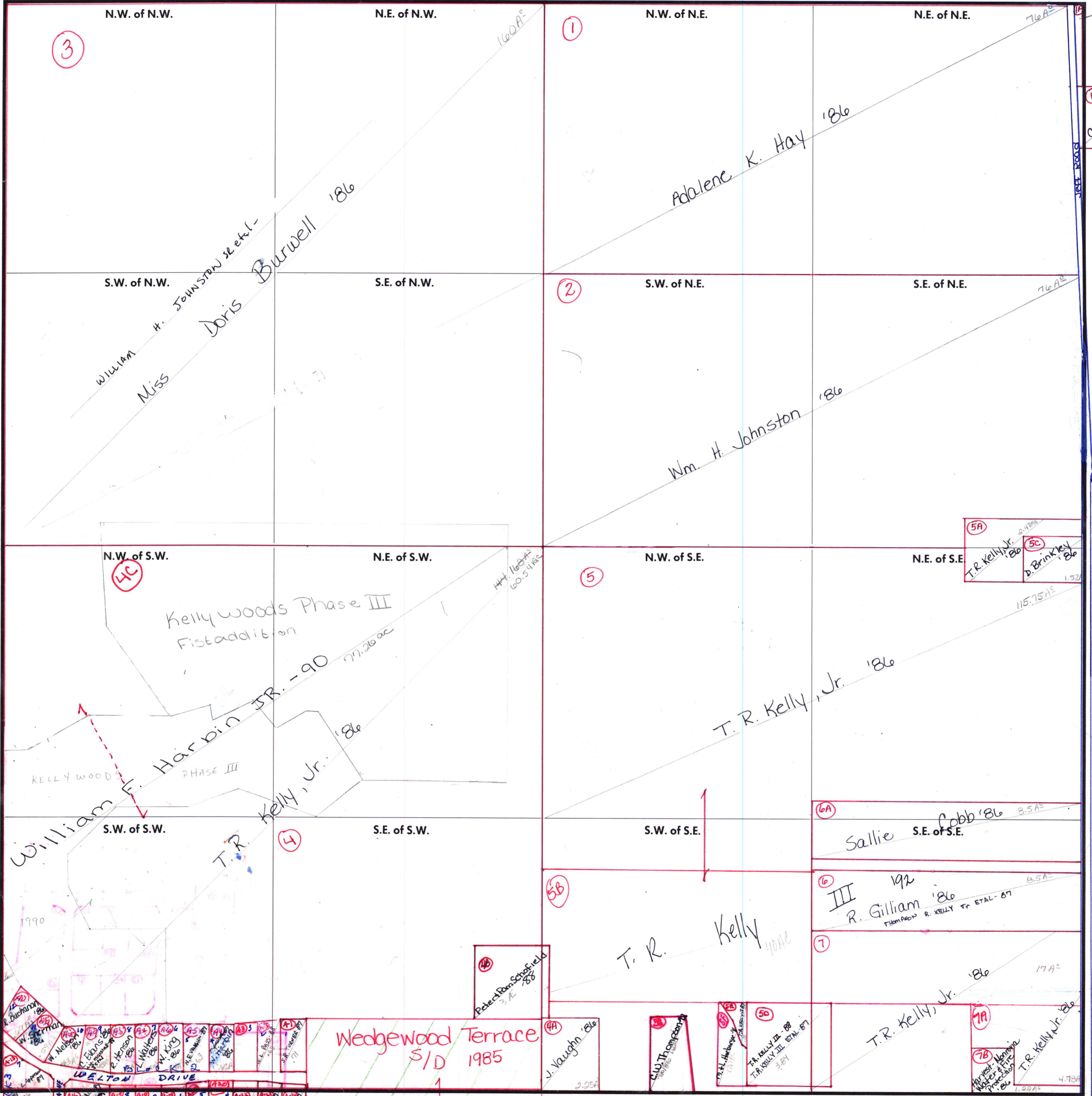


FORM 1—S.T.C.—ROBERTS & SON, BIRMINGHAM



N.W. of N.W. N.E. of N.W. N.W. of N.E. N.E. of N.E.

S.W. of N.W. S.E. of N.W. S.W. of N.E. S.E. of N.E.

N.W. of S.W. N.E. of S.W. N.W. of S.E. N.E. of S.E.

S.W. of S.W. S.E. of S.W. S.W. of S.E.

3

1

2

4C

5

4

5B

6A

6

7

4B

4A

5A

5B

5A

5C

1B

J.H. Gilmore '91

Kelly Woods
Phase I
2-2W-34A
from
Parcel
2-2W-34004

COUNTY MADISON

Scale - 1 inch = 300 Ft.

SE - T.R. KELLY III et al - 88

56 A²
Eula R. Kelly '86

2.44 A²

T.R. Kelly, Jr. '86

D. Brinkley '86

1.52 A²

Sallie Cobb '86 8.5 A²

S.E. of S.E.

R. Gilliam '86 8.5 A²

THOMPSON R. KELLY TR ETAL - 87

T.R. Kelly, Jr. '86 17 A²

T.R. Kelly, Jr. '86 4.78 A²

7A

7B

WILLIAM H. JOHNSTON et al -
Miss Doris Burwell '86

Adalene K. Hay '86

Wm. H. Johnston '86

Kelly Woods Phase III
First Addition

William F. Harbin JR. - 90 77.26 ac

T.R. Kelly, Jr. '86

Wedgewood Terrace
S/D 1985

J. Vaughn '86

W. Tr. Company

T.R. KELLY III et al - 87

W. Tr. Company

T.R. Kelly, Jr. '86