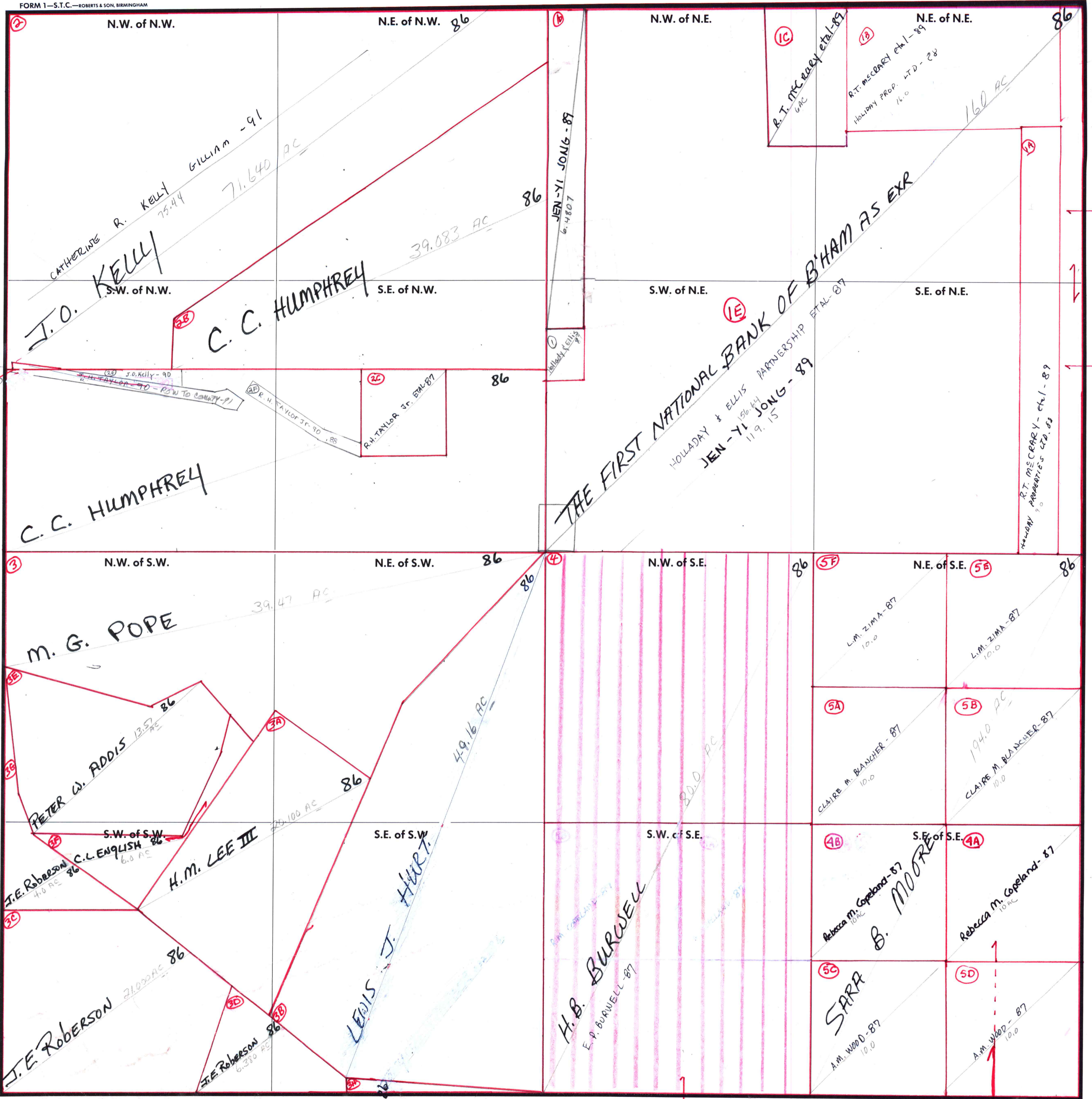


FORM 1—S.T.C.—ROBERTS & SON, BIRMINGHAM



① Relate this parcel
 to Madison Co
 J.H. Taylor - 90
 p. 102

CARRIED
 IN PARCEL
 2-12-19 *1

COUNTY MADISON

Scale — 1 inch = 300 Ft.

CARRIED ON QUINCY MOUNT. ESTATES SEC. 25

REMAINDER LIES IN
 21W/25 ALSO 21W/30

T. Stapler - 86
 1.32