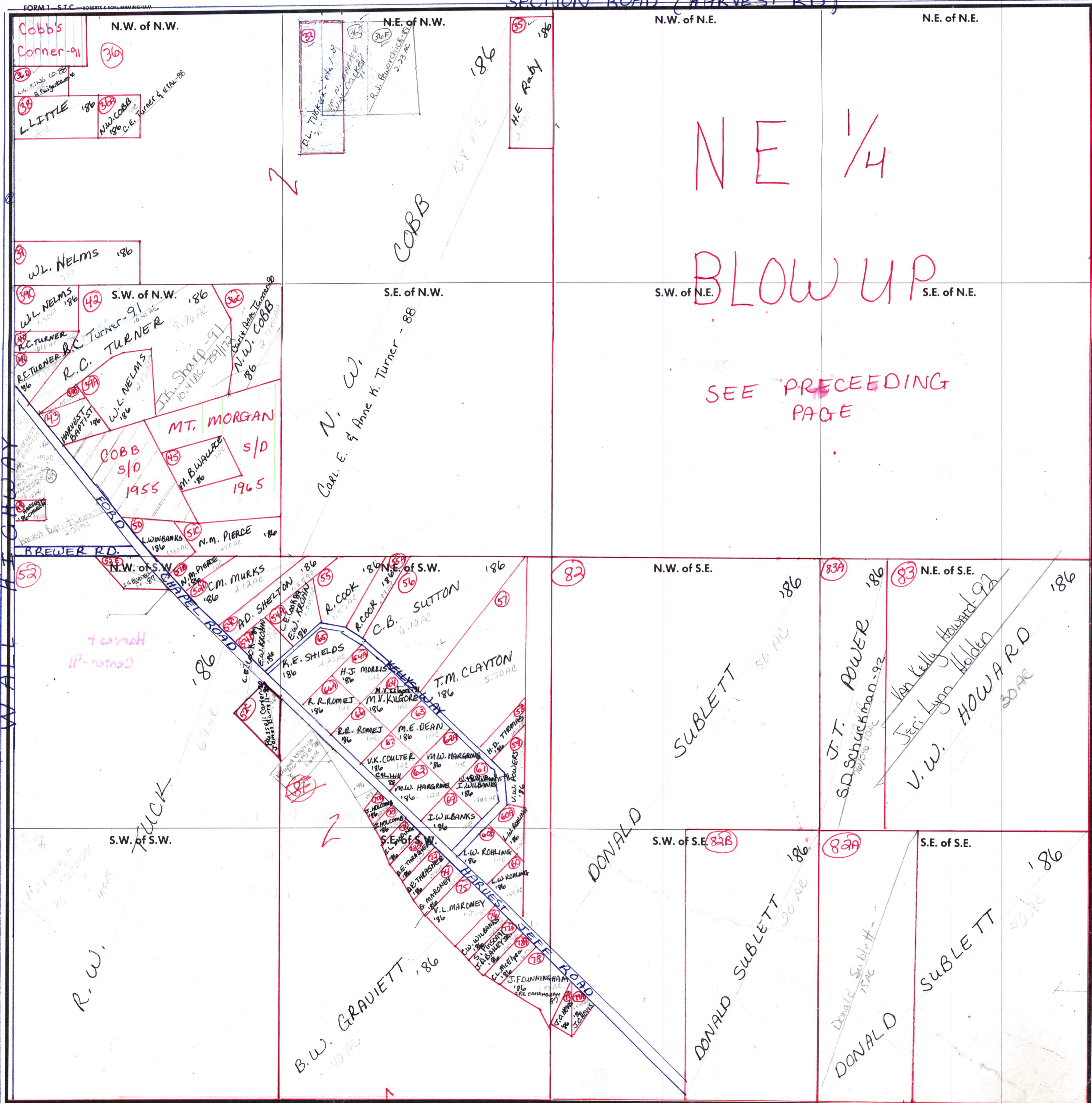


SECTION ROAD (HARVEST RD)



- Not plotted:
- (52C) Fords chapel Methodist Church Parsonage
 - (52B) Tuck, R.W. 1.03 AC
 - (52A) Tuck, Ruth M. 3 AC
 - (50A) Tuck, Lillie B. 2 AC
 - (47) Harper, James K. 1.50 AC
 - (46) A. Seymour .25 AC
 - (36B) Harvest Manoria Water & Fire Protection 1 AC

CARRIED IN
W.F. HARBIN
88

Carried in
2-2W-1800-118