

SECTION

20

TOWNSHIP

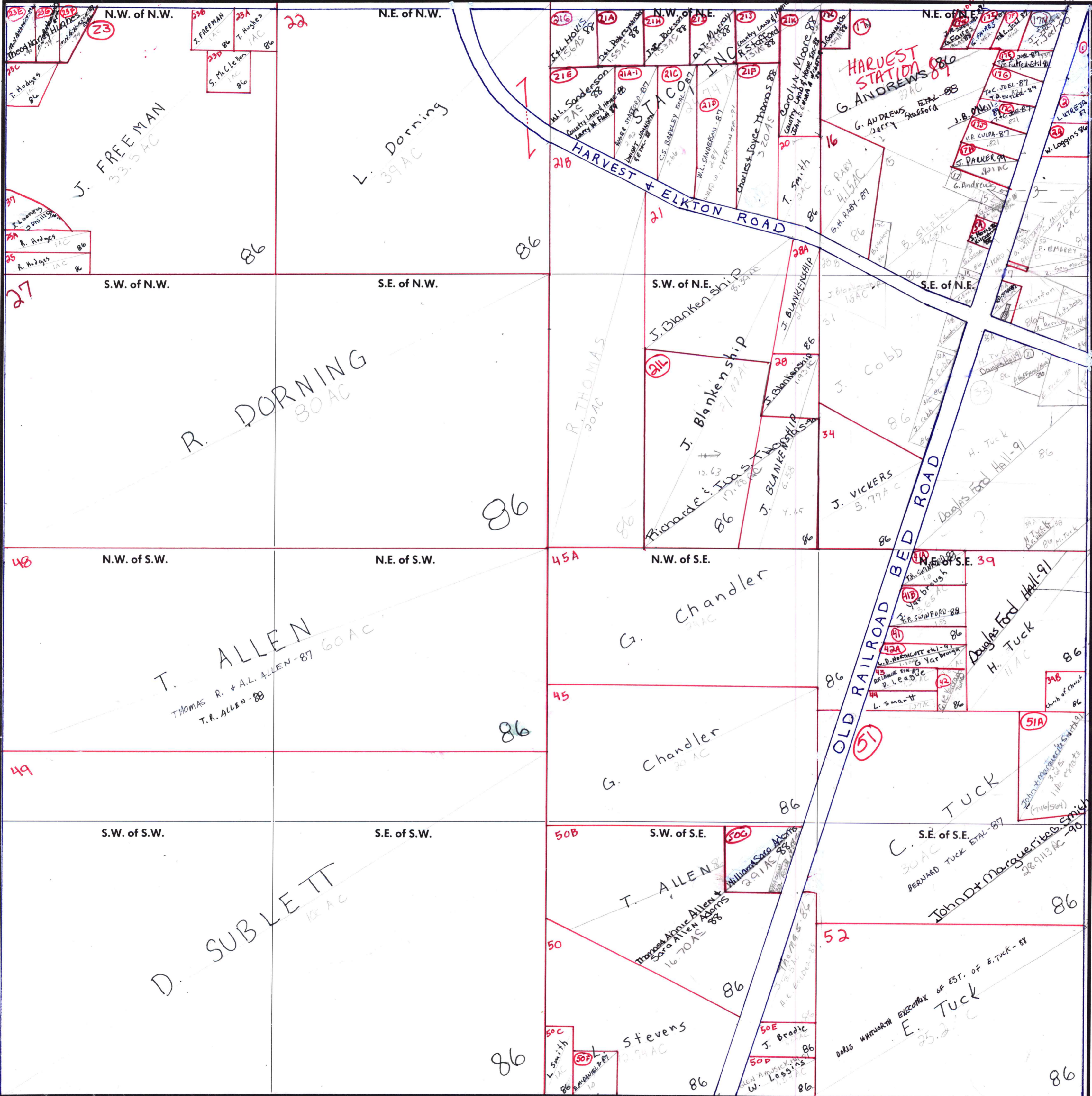
2

RANGE

2W

FORM 1—S.T.C.—ROBERTS & SON, BIRMINGHAM

HARVEST ROAD



C.L. SANDERSON ETAL-87

W. Quinn -40
17th deleted by order 88-3
17th Garry Anderson et al-88
Clifford & Shelly Anderson-88

C.L. SANDERSON ETAL 87
W. COBB

Johnnie Lester Robert Taylor-92
L. Stevens 86

5A Sterling Janice Lynn -90
0.31 AC

Doris Whitworth EXEC.
FOR EST. OF E. TUCK-89
JAMES TUCK-89

5A

H. Tuck
Douglas Ford Hall-91

J. Vickers
5.77 AC

H. Tuck
Douglas Ford Hall-91

H. Tuck
Douglas Ford Hall-91

H. Tuck
Douglas Ford Hall-91

H. Tuck
Douglas Ford Hall-91

H. Tuck
Douglas Ford Hall-91

H. Tuck
Douglas Ford Hall-91

H. Tuck
Douglas Ford Hall-91

H. Tuck
Douglas Ford Hall-91

H. Tuck
Douglas Ford Hall-91

H. Tuck
Douglas Ford Hall-91

H. Tuck
Douglas Ford Hall-91

H. Tuck
Douglas Ford Hall-91

H. Tuck
Douglas Ford Hall-91

H. Tuck
Douglas Ford Hall-91

H. Tuck
Douglas Ford Hall-91

H. Tuck
Douglas Ford Hall-91

COUNTY MADISON

Scale — 1 inch = 300 Ft.

? 17B J. Beard
1 AC 86

86