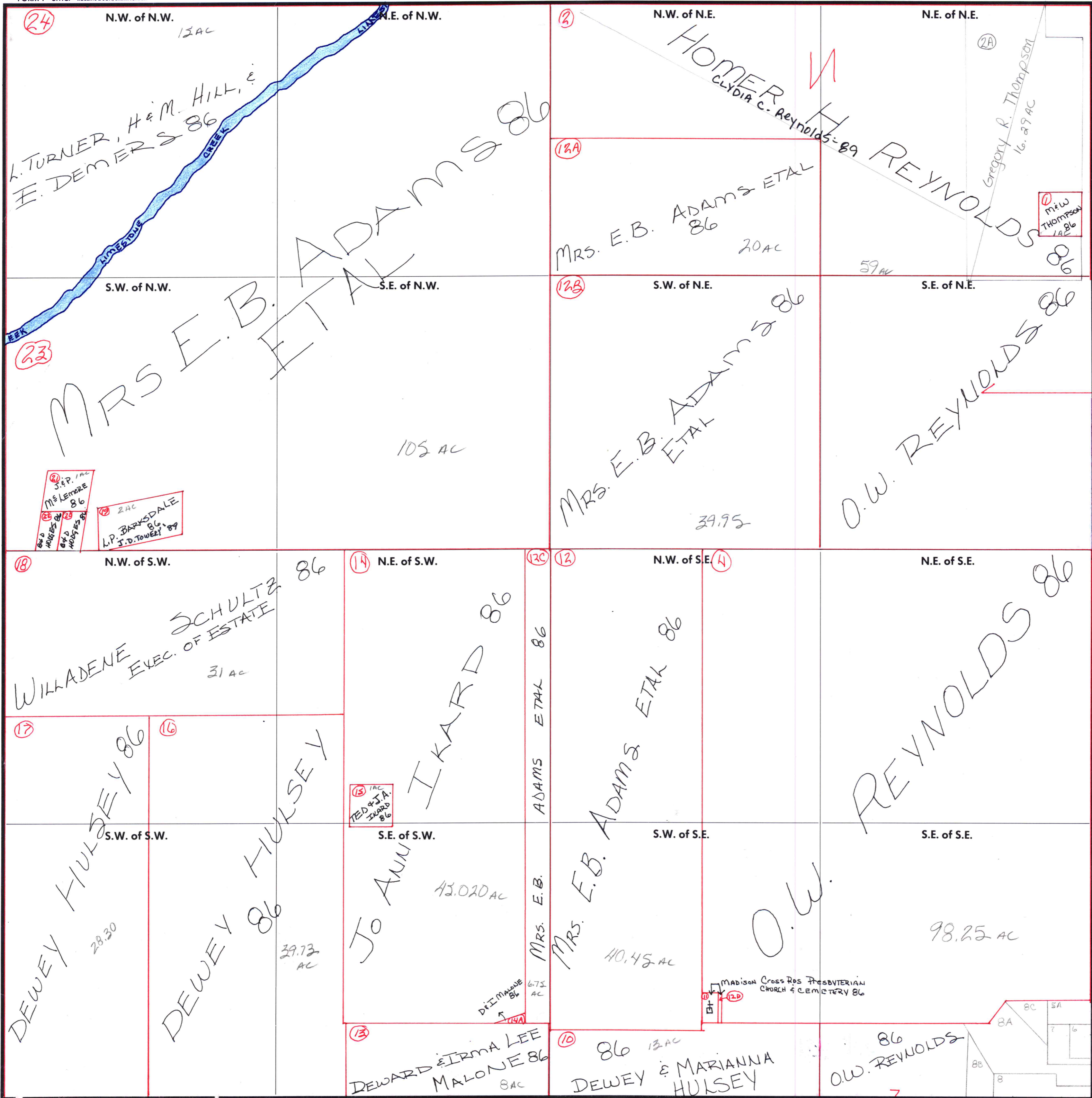


SECTION **34**

TOWNSHIP **1**

RANGE **2W**

FORM 1—S.T.C.—ROBERTS & SON, BIRMINGHAM



CARRIED IN 1-2W-35

CARRIED IN 2-2W-3

- 5A - G. FAULKENBERRY - .523 AC
- 6 - J. TAYLOR - .5 AC
- 7 - J. TAYLOR - .5 AC
- 8 - G.M. BIKES - .5 AC
- 8A - T.L. BIKES - .3 AC
- 8B - G.M. BIKES - .4 AC
- 8C - M. BIKES SMITH - .5 AC

COUNTY MADISON

Scale — 1 inch = 300 Ft.