

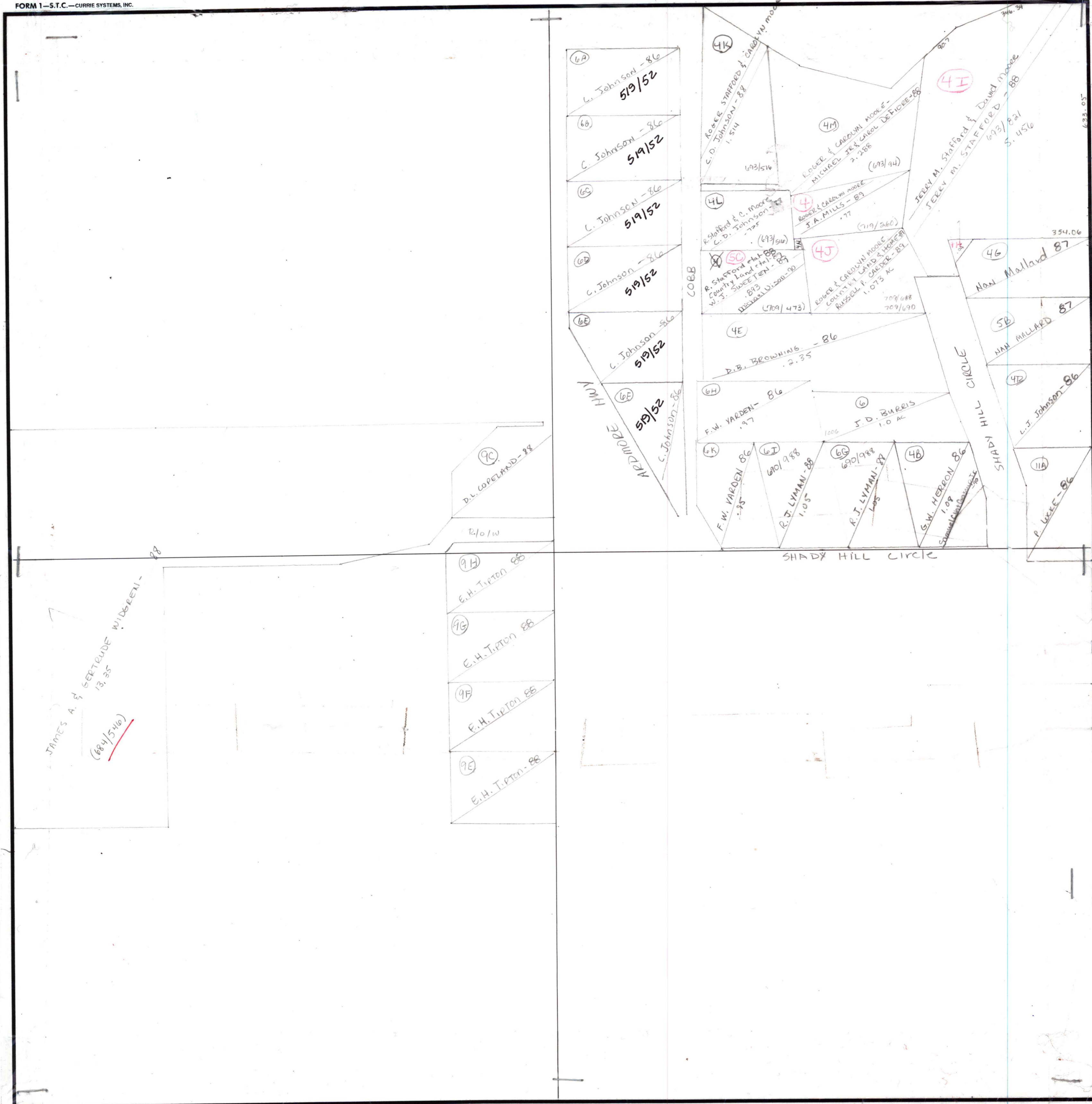
NE 1/4 OF NW 1/4

SECTION 32

TOWNSHIP 1

RANGE 2W

FORM 1-S.T.C.—CURRIE SYSTEMS, INC.



JAMES A. & GERTRUDE WIDEMAN - 88
 13.35
 (884/546)

9C
 D.L. LOPELAND - 88
 2.10 W

9H
 E.H. TIPTON - 88
 9G
 E.H. TIPTON - 88
 9F
 E.H. TIPTON - 88
 9E
 E.H. TIPTON - 88

6A
 C. JOHNSON - 86
 519/52
 6B
 C. JOHNSON - 86
 519/52
 6C
 C. JOHNSON - 86
 519/52
 6D
 C. JOHNSON - 86
 519/52
 6E
 C. JOHNSON - 86
 519/52
 6F
 C. JOHNSON - 86
 519/52
 KARPORE HWY
 C. JOHNSON - 86

4K
 ROBERT STAFFORD & CAROLYN MOORE
 C.D. JOHNSON - 88
 1.514
 4M
 ROBERT & CAROLYN MOORE -
 MICHAEL J. & CAROL DEFIGUE - 88
 2.288
 (693/94)
 4L
 R. STAFFORD & C. MOORE
 C.D. JOHNSON - 88
 .725
 (693/94)
 4
 ROBERT & CAROLYN MOORE
 J.A. MILLS - 89
 .77
 (719/260)
 4J
 ROBERT & CAROLYN MOORE
 COUNTY LAND & HOME - 88
 RUSSELL P. CARROLL - 89
 1.073 AC
 709/688
 709/690
 4E
 D.B. BROWNING - 86
 2.35
 6H
 F.W. YARDEN - 86
 .97
 6
 J.D. BUREIS
 1.0 AC
 1006
 6K
 F.W. YARDEN - 86
 .95
 6J
 R.J. LYMAN - 88
 1.05
 690/988
 6G
 R.J. LYMAN - 88
 1.05
 690/988
 4B
 G.W. HERON - 86
 1.08
 SHADY HILL CIRCLE
 4I
 JERRY M. STAFFORD & DAVID MOORE
 JERRY M. STAFFORD - 88
 693/821
 5.456
 46
 NAN MULLARD - 87
 354.06
 5B
 NAN MULLARD - 87
 47
 L.J. JOHNSON - 86
 11A
 P. LECHE - 86

Scale — 1 inch = 300 Ft.

COUNTY MADISON