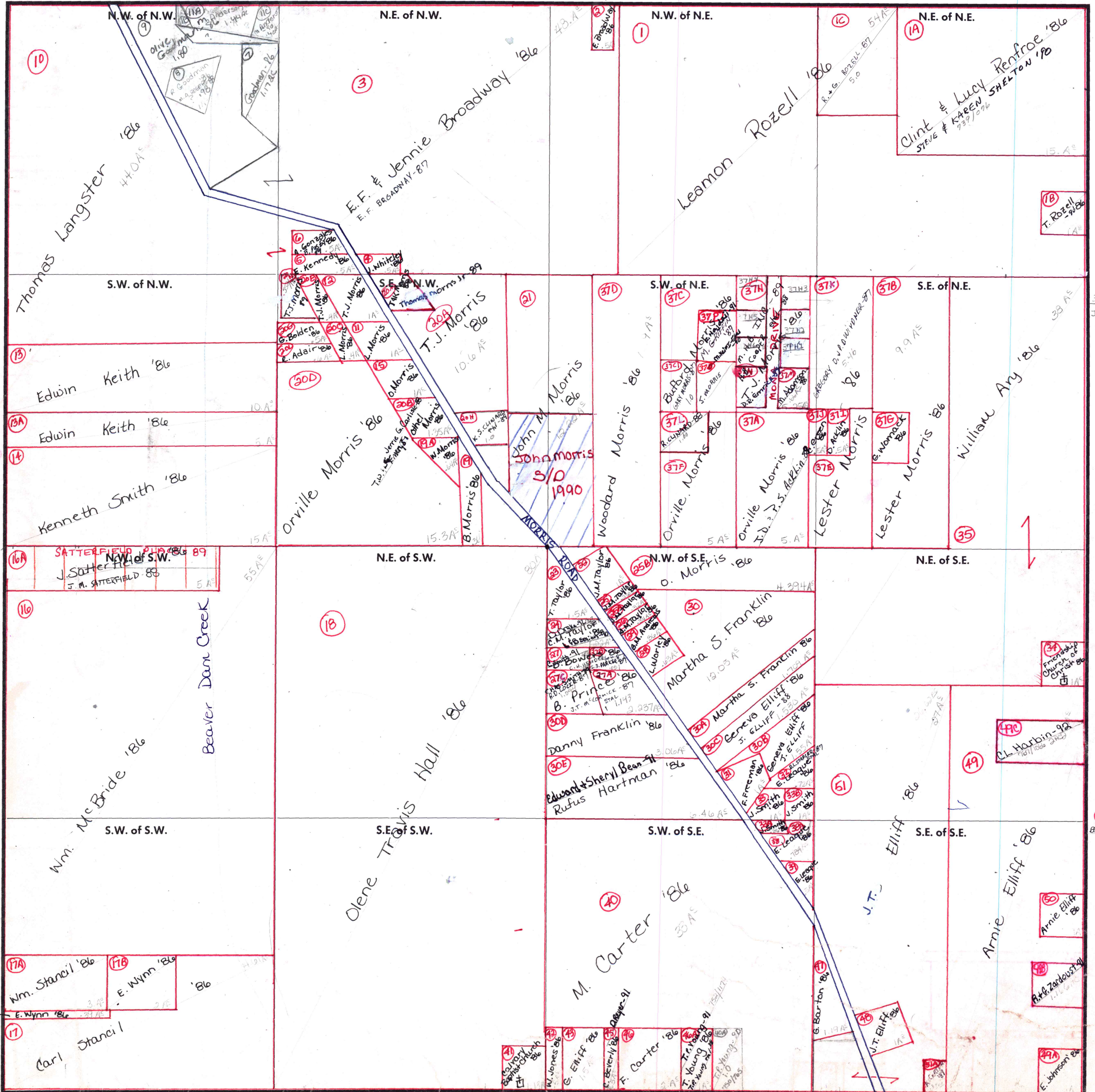


FORM 1—S.T.C.—ROBERTS & SON, BIRMINGHAM



37H1-6
JOHN J. CONNOLLY
401-91
.5AC. EACH

34
FRIENDSHIP
CHURCH OF
CHRIST '86

49C
CL. Harbin-92
11/11/1986 SHED

38A
BOBBY G. PASSON '88
-199

56
Arnie Elliff
'86

78
R.H. Zardust
11/26/86

49A
E. Johnson '86

Scale — 1 inch = 300 Ft.

34 B.A. Smith-92
7/23/91

STANLEY, C. COHAREN-87

Kenneth E. Deane

COUNTY MADISON