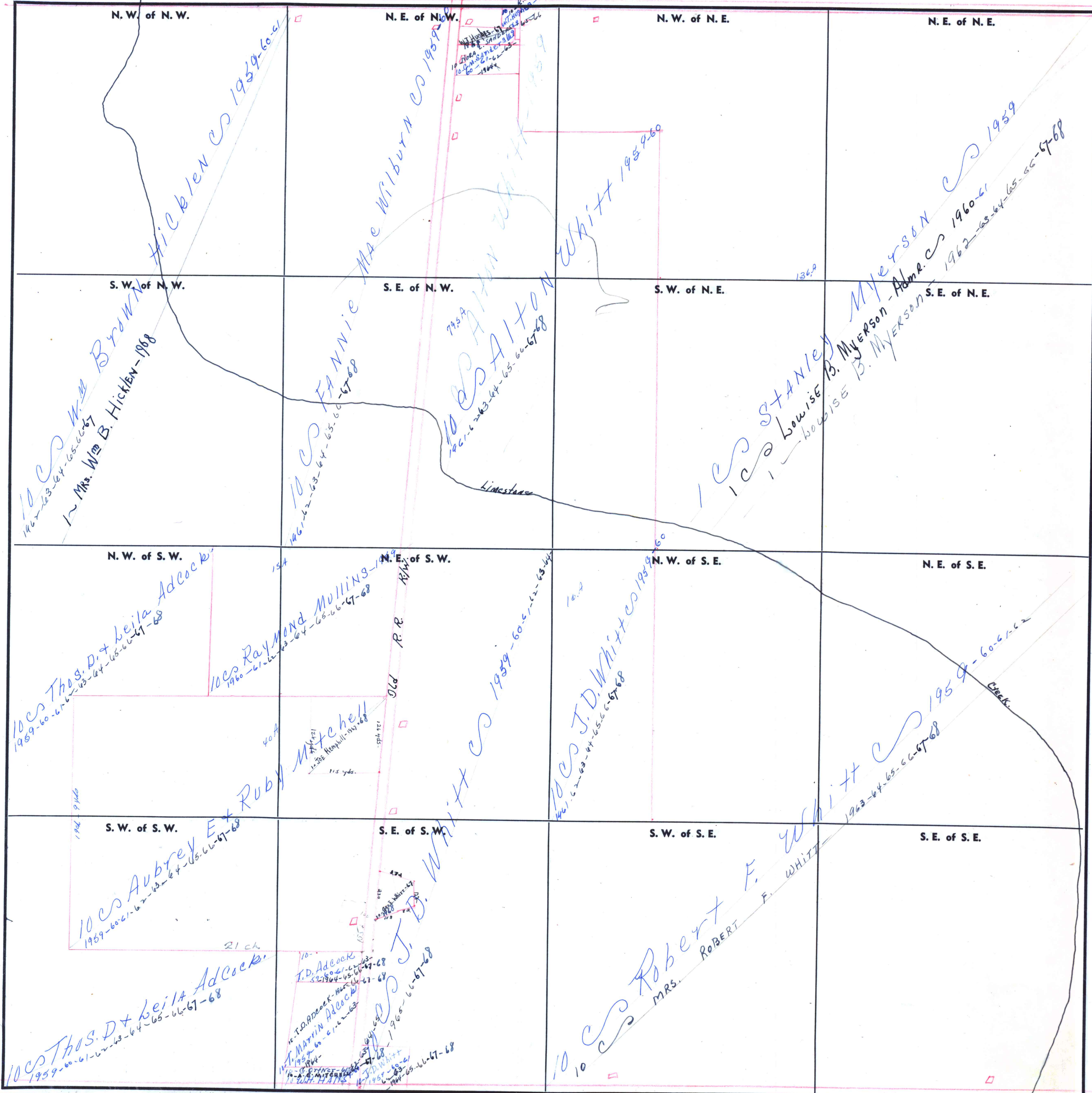


FORM 1—S.T.C.—ROBERT & SON, MINNESOTA



N. W. of N. W.

N. E. of N. W.

N. W. of N. E.

N. E. of N. E.

S. W. of N. W.

S. E. of N. W.

S. W. of N. E.

S. E. of N. E.

N. W. of S. W.

N. E. of S. W.

N. W. of S. E.

N. E. of S. E.

S. W. of S. W.

S. E. of S. W.

S. W. of S. E.

S. E. of S. E.

10cs Wm BROWN  
146-63-64-65-66-67  
In Mrs. Wm B. Hicklen-1968  
Hicklen Co 1959-60-61

10cs FANNIE Mae WILBURN Co 1959  
146-62-63-64-65-66-67-68  
10cs SAITON  
146-62-63-64-65-66-67-68  
Limestone

10cs STANLEY Myerson  
146-62-63-64-65-66-67-68  
10cs LOWISE B. Myerson  
146-62-63-64-65-66-67-68  
10cs WHITT 1959-60

10cs Myerson  
146-62-63-64-65-66-67-68  
10cs Myerson  
146-62-63-64-65-66-67-68

10cs THOS. D. & Beila Adcock  
146-60-61-62-63-64-65-66-67-68

10cs RAYMOND MULLINS  
146-61-62-63-64-65-66-67-68  
Old R.R.  
10cs MITCHELL  
146-61-62-63-64-65-66-67-68

10cs J.D. WHITT Co 1959-60  
146-62-63-64-65-66-67-68

10cs WHITT 1959-60  
146-62-63-64-65-66-67-68  
Creek

10cs Aubrey E. & Ruby  
146-62-63-64-65-66-67-68  
10cs THOS. D. & Beila Adcock  
146-60-61-62-63-64-65-66-67-68

10cs J.D. WHITT Co 1959-60  
146-62-63-64-65-66-67-68  
10cs T.D. Adcock  
146-62-63-64-65-66-67-68  
10cs MARTIN Adcock  
146-62-63-64-65-66-67-68  
10cs J.D. WHITT  
146-62-63-64-65-66-67-68

10cs Robert F. WHITT  
146-62-63-64-65-66-67-68  
MRS. ROBERT F. WHITT

10cs WHITT 1959-60  
146-62-63-64-65-66-67-68