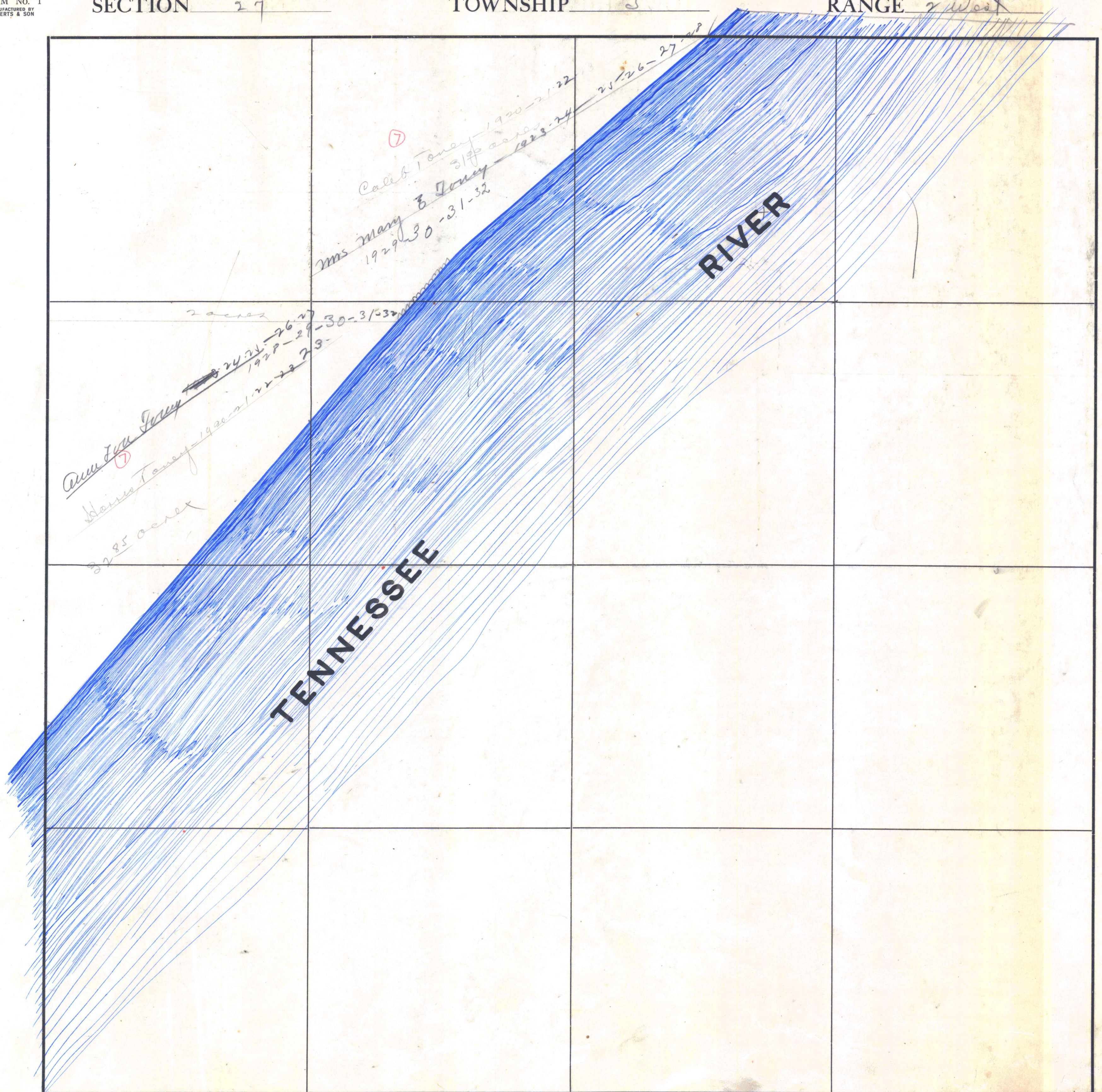


SECTION 27

TOWNSHIP 5

RANGE 2 West



⑦
 Caleb Toney 1920-21-22
 31 1/2 acres
 Mrs Mary B Toney 1923-24
 1929-30 -31-32
 25-26-27-28

Anna Lee Toney ⑦
 2 acres
 24-25-26-27
 1928-29-30-31-32
 23-24-25-26-27-28-29-30-31-32
 32 1/2 acres
 Mrs Mary Toney 1920-21-22-23-24-25-26-27-28-29-30-31-32

TENNESSEE

RIVER

COUNTY _____