

SECTION

21

TOWNSHIP

3

RANGE

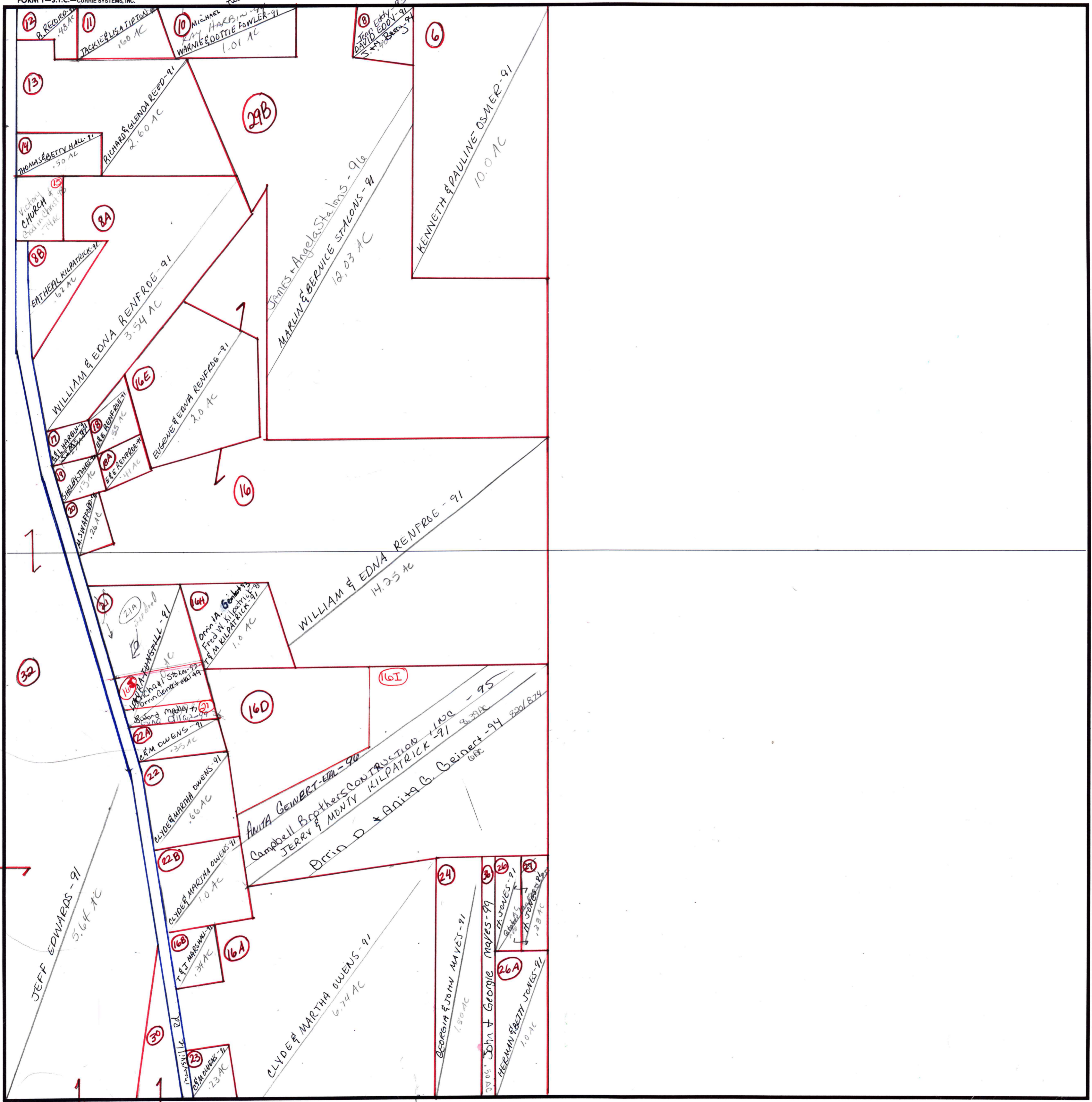
2E

FORM 1-S.T.C.-CURRIE SYSTEMS, INC.

Edna G. Hillis-98

BLOW UP OF
W 1/2 OF
NW 1/4

- (17) Mark & Regina Manning - 97
- (18B) SHELBY JONES - 91 .03 AC
- (18C) ALTON & DEBORAH SIMS - 91 .06 AC
- (19A) ALTON & DEBORAH SIMS - 91 .06 AC



COUNTY MADISON