

SW 1/4

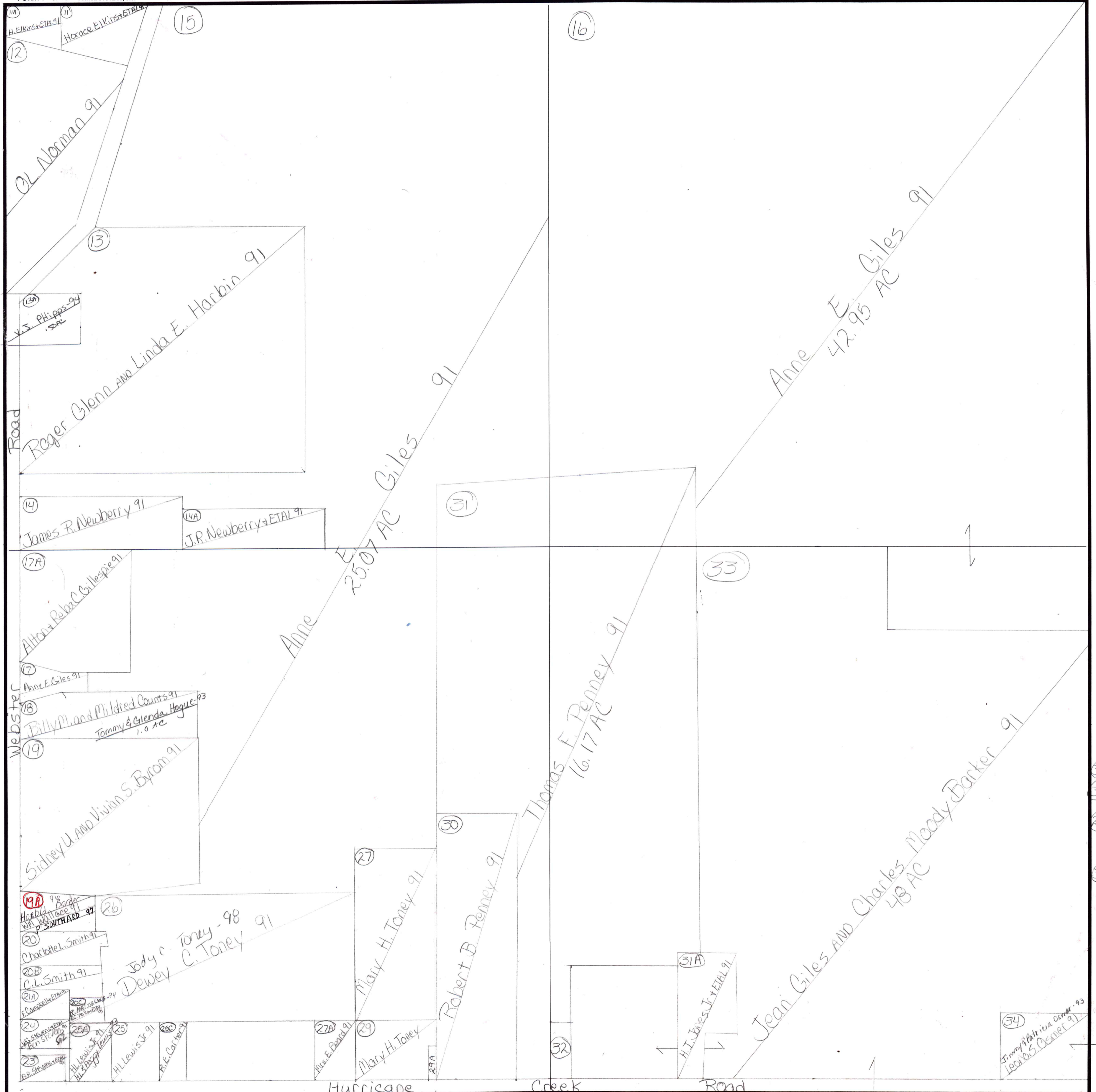
MAD 01
11/25/20 12/1

SECTION 16

TOWNSHIP 3

RANGE 2E

FORM 1-S.T.C.-CURRIE SYSTEMS, INC.



Leave in Penney

300 James & Janice Lasater - 91

31B Unplat
 31D Unplat
 29A Mary H. Toney 91
 32 Etha Hunt 91

Carried 3-2E-16 SW 1/4 of SE 1/4

COUNTY MADISON

Carried 3-2E-21