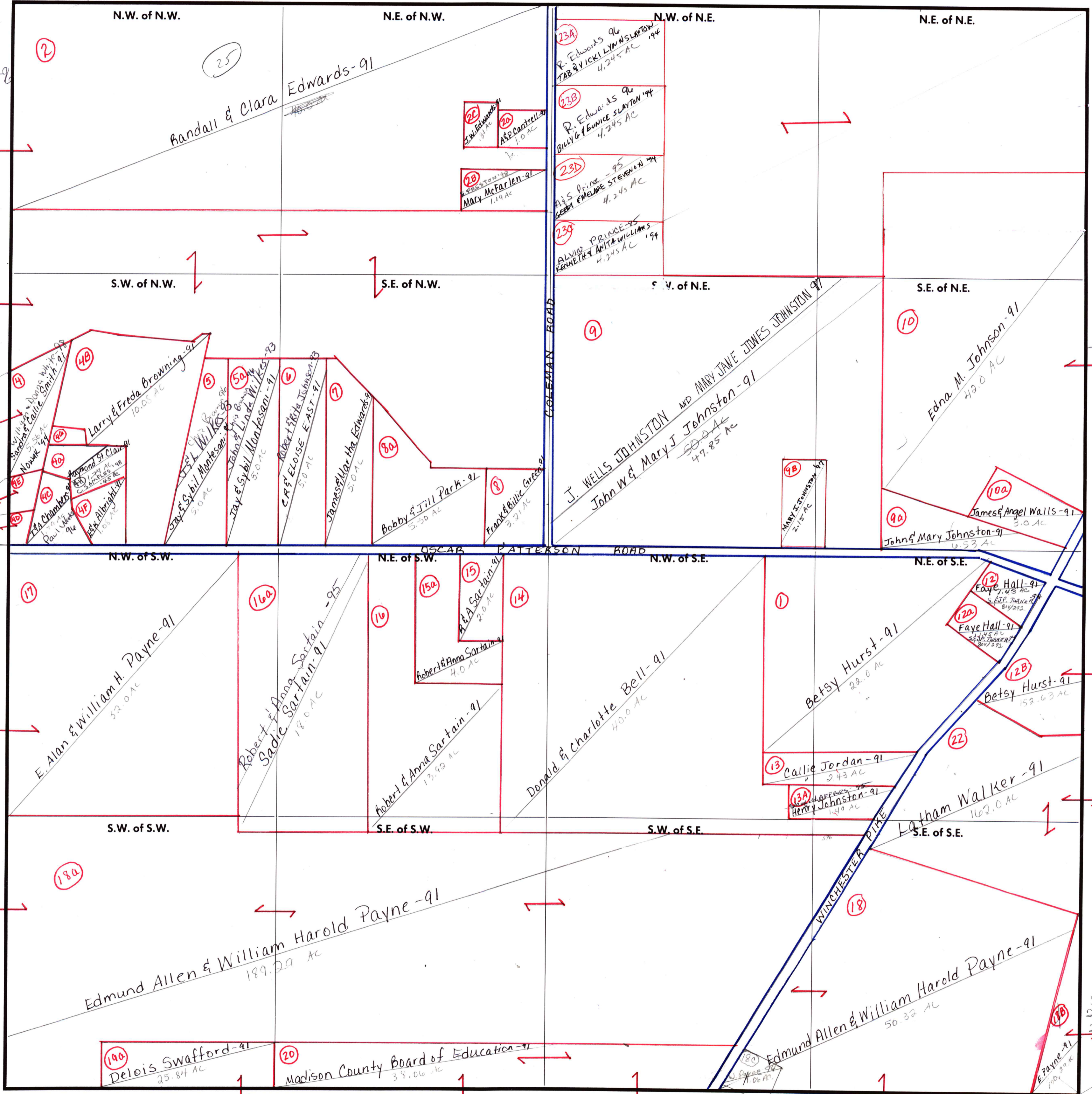


FORM 1-S.T.C.-CURRIE SYSTEMS, INC.

MAD 01 MADISON CO



(20) Clara Edwards-91

carried in 2-2E-12 IE

- (4G) Eddie & Katherine Albright - 91
- (4E) T.E. Sefton & et al - 98
- (4E) Charles & Sharon Steelman - 91
- (4D) Tony & Anita Stiles - 91
- Jennifer Sander et al - 97

carried in 2-2E-8

See 2-2E-8-A-8
2-2E-17-A-9
Computer map

carried in 2-2E-18