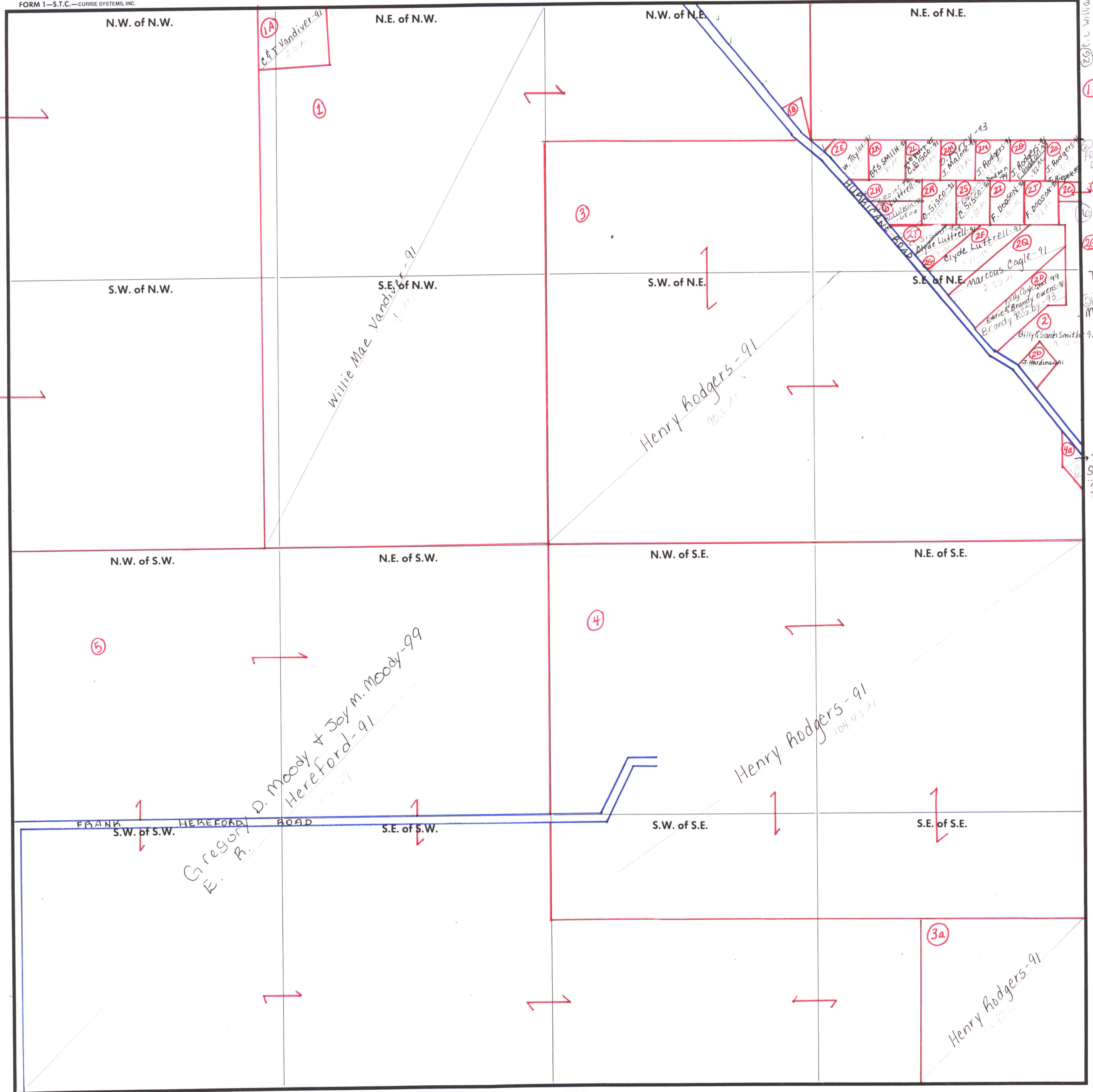


SECTION **3**

TOWNSHIP **2**

RANGE **2E**

FORM 1—S.T.C.—CURRIE SYSTEMS, INC.



25 C. L. Williams - 98  
 1B Johnnie & Eddie Baker - 91  
 20C Madison County - 91  
 25 PARKS & SISCO, Inc. 92  
 M. L. Johnson - 93  
 T. E. KIMS + 97  
 R. C. B. Smith - 98  
 31 Edward 91  
 Marie Black 91-93  
 Tim & Vickie Southard - 91  
 Tim Southard