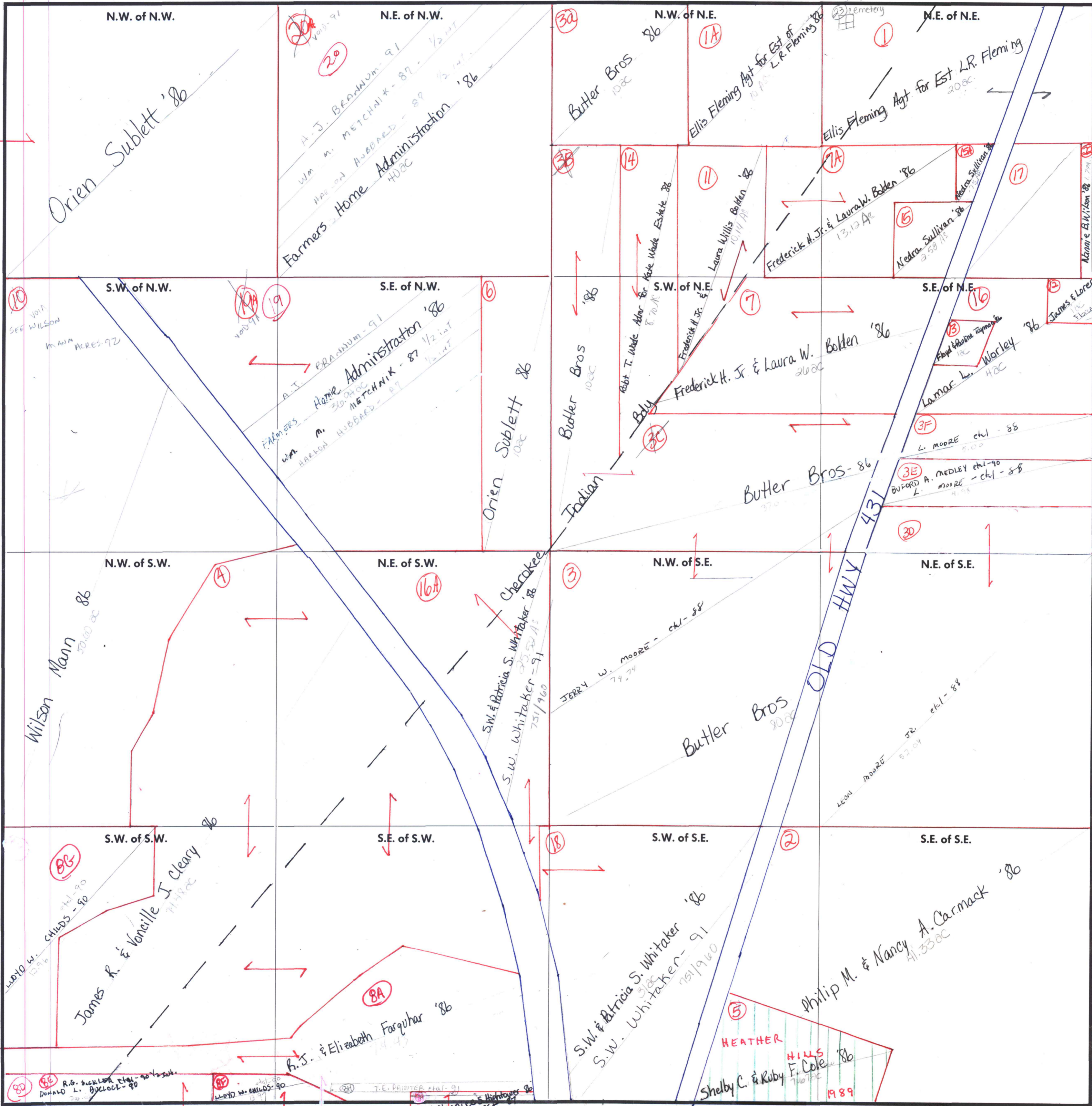


FORM 1-S.T.C.-ROBERTS & SON, BIRMINGHAM

Carried in 4-2E-31



COUNTY MADISON

Carried to 5-2E-7

Scale - 1 inch = 300 Ft.

(17) unplatible Berkeley School '86

James & Lorene Rodgers '86
B. Alexander & et al - 91
E. H. Alexander & et al - 192 & 193

SEE WILSON
M. ANN
ACRES - 92

NO. 91
NO. 91

L. MOORE ch. 1 - 88
MEDLEY ch. 1 - 90
MOORE - ch. 1 - 88

HEATHER HILLS
F. Cole '86
1989

T.E. PRINSTER
MAC 7-1-91

Lorrie M. & Glennie S. Whitaker
B.W. & Tracy James

(3)

Cherokee
S.W. & Patricia S. Whitaker '86
S.W. Whitaker - 91
751/960

(18)

S.W. & Patricia S. Whitaker '86
S.W. Whitaker - 91
751/960

Orion Sublett '86
1000

(38)

Butler Bros
1000
Abbt T. Wade Abbr for Kate Wade Estate '86
870/116

(32)

Butler Bros
1000

(1A)

Ellis Fleming Agt for Est of L.R. Fleming '86
1000

(11)

Laura Willis Bolden '86
1014 AC

(7)

Frederick H. Jr. & Laura W. Bolden '86
2000

(3C)

Butler Bros - 86
370

(2)

Butler Bros
2000

(5)

Shelby C. & Ruby F. Cole '86
710 AC

(2)

Philip M. & Nancy A. Carmack '86
41.3300

(5)

Shelby C. & Ruby F. Cole '86
710 AC

(17)

unplatible Berkeley School '86
58 AC

(16)

James & Lorene Rodgers '86
100
B. Alexander & et al - 91
E. H. Alexander & et al - 192 & 193

(3F)

L. MOORE ch. 1 - 88
MEDLEY ch. 1 - 90
MOORE - ch. 1 - 88

(30)

Butler Bros
2000

(2)

Philip M. & Nancy A. Carmack '86
41.3300

(2)

Philip M. & Nancy A. Carmack '86
41.3300

(5)

Shelby C. & Ruby F. Cole '86
710 AC

(17)

unplatible Berkeley School '86
58 AC

(13)

Paul & Anne Tompkins
100

(3E)

L. MOORE ch. 1 - 88
MEDLEY ch. 1 - 90
MOORE - ch. 1 - 88

(30)

Butler Bros
2000

(2)

Philip M. & Nancy A. Carmack '86
41.3300

(2)

Philip M. & Nancy A. Carmack '86
41.3300

(5)

Shelby C. & Ruby F. Cole '86
710 AC

(17)

unplatible Berkeley School '86
58 AC

(13)

Paul & Anne Tompkins
100

(3E)

L. MOORE ch. 1 - 88
MEDLEY ch. 1 - 90
MOORE - ch. 1 - 88

(30)

Butler Bros
2000

(2)

Philip M. & Nancy A. Carmack '86
41.3300

(2)

Philip M. & Nancy A. Carmack '86
41.3300

(5)

Shelby C. & Ruby F. Cole '86
710 AC

(17)

unplatible Berkeley School '86
58 AC

(12)

James & Lorene Rodgers '86
100
B. Alexander & et al - 91
E. H. Alexander & et al - 192 & 193

(3F)

L. MOORE ch. 1 - 88
MEDLEY ch. 1 - 90
MOORE - ch. 1 - 88

(30)

Butler Bros
2000

(2)

Philip M. & Nancy A. Carmack '86
41.3300

(2)

Philip M. & Nancy A. Carmack '86
41.3300

(5)

Shelby C. & Ruby F. Cole '86
710 AC

(17)

unplatible Berkeley School '86
58 AC

(12)

James & Lorene Rodgers '86
100
B. Alexander & et al - 91
E. H. Alexander & et al - 192 & 193

(3F)

L. MOORE ch. 1 - 88
MEDLEY ch. 1 - 90
MOORE - ch. 1 - 88

(30)

Butler Bros
2000

(2)

Philip M. & Nancy A. Carmack '86
41.3300

(2)

Philip M. & Nancy A. Carmack '86
41.3300

(5)

Shelby C. & Ruby F. Cole '86
710 AC

(17)

unplatible Berkeley School '86
58 AC

(12)

James & Lorene Rodgers '86
100
B. Alexander & et al - 91
E. H. Alexander & et al - 192 & 193

(3F)

L. MOORE ch. 1 - 88
MEDLEY ch. 1 - 90
MOORE - ch. 1 - 88

(30)

Butler Bros
2000

(2)

Philip M. & Nancy A. Carmack '86
41.3300

(2)

Philip M. & Nancy A. Carmack '86
41.3300

(5)

Shelby C. & Ruby F. Cole '86
710 AC

(17)

unplatible Berkeley School '86
58 AC

(12)

James & Lorene Rodgers '86
100
B. Alexander & et al - 91
E. H. Alexander & et al - 192 & 193

(3F)

L. MOORE ch. 1 - 88
MEDLEY ch. 1 - 90
MOORE - ch. 1 - 88

(30)

Butler Bros
2000

(2)

Philip M. & Nancy A. Carmack '86
41.3300

(2)

Philip M. & Nancy A. Carmack '86
41.3300

(5)

Shelby C. & Ruby F. Cole '86
710 AC

(17)

unplatible Berkeley School '86
58 AC

(12)

James & Lorene Rodgers '86
100
B. Alexander & et al - 91
E. H. Alexander & et al - 192 & 193

(3F)

L. MOORE ch. 1 - 88
MEDLEY ch. 1 - 90
MOORE - ch. 1 - 88

(30)

Butler Bros
2000

(2)

Philip M. & Nancy A. Carmack '86
41.3300

(2)

Philip M. & Nancy A. Carmack '86
41.3300

(5)

Shelby C. & Ruby F. Cole '86
710 AC

(17)

unplatible Berkeley School '86
58 AC

(15)

Madra Sullivan '86
3.58 AC

(17)

Madra Sullivan '86
3.58 AC

(15)

Madra Sullivan '86
3.58 AC

(17)

Madra Sullivan '86
3.58 AC

(15)

Madra Sullivan '86
3.58 AC

(17)

Madra Sullivan '86
3.58 AC

(15)

Madra Sullivan '86
3.58 AC

(17)

unplatible Berkeley School '86
58 AC

(15)

Madra Sullivan '86
3.58 AC

(17)

Madra Sullivan '86
3.58 AC

(15)

Madra Sullivan '86
3.58 AC

(17)

Madra Sullivan '86
3.58 AC

(15)

Madra Sullivan '86
3.58 AC

(17)

Madra Sullivan '86
3.58 AC

(15)

Madra Sullivan '86
3.58 AC

(17)

unplatible Berkeley School '86
58 AC

(15)

Madra Sullivan '86
3.58 AC

(17)

Madra Sullivan '86
3.58 AC

(15)

Madra Sullivan '86
3.58 AC

(17)

Madra Sullivan '86
3.58 AC

(15)

Madra Sullivan '86
3.58 AC

(17)

Madra Sullivan '86
3.58 AC

(15)

Madra Sullivan '86
3.58 AC

(17)

unplatible Berkeley School '86
58 AC

(15)

Madra Sullivan '86
3.58 AC

(17)

Madra Sullivan '86
3.58 AC

(15)

Madra Sullivan '86
3.58 AC

(17)

Madra Sullivan '86
3.58 AC

(15)

Madra Sullivan '86
3.58 AC

(17)

Madra Sullivan '86
3.58 AC

(15)

Madra Sullivan '86
3.58 AC

(17)

unplatible Berkeley School '86
58 AC

(15)

Madra Sullivan '86
3.58 AC

(17)

Madra Sullivan '86
3.58 AC

(15)

Madra Sullivan '86
3.58 AC

(17)

Madra Sullivan '86
3.58 AC

(15)

Madra Sullivan '86
3.58 AC

(17)

Madra Sullivan '86
3.58 AC

(15)

Madra Sullivan '86
3.58 AC

(17)

unplatible Berkeley School '86
58 AC

(15)

Madra Sullivan '86
3.58 AC

(17)

Madra Sullivan '86
3.58 AC

(15)

Madra Sullivan '86
3.58 AC

(17)

Madra Sullivan '86
3.58 AC

(15)

Madra Sullivan '86
3.58 AC

(17)

Madra Sullivan '86
3.58 AC

(15)

Madra Sullivan '86
3.58 AC

(17)

unplatible Berkeley School '86
58 AC

(15)

Madra Sullivan '86
3.58 AC

(17)

Madra Sullivan '86
3.58 AC

(15)

Madra Sullivan '86
3.58 AC

(17)

Madra Sullivan '86
3.58 AC

(15)

Madra Sullivan '86
3.58 AC

(17)

Madra Sullivan '86
3.58 AC

(15)

Madra Sullivan '86
3.58 AC

(17)

unplatible Berkeley School '86
58 AC

(15)

Madra Sullivan '86
3.58 AC

(17)