

P.I.I  
6-10-87  
350

map of - madison, tn.

SECTION 20

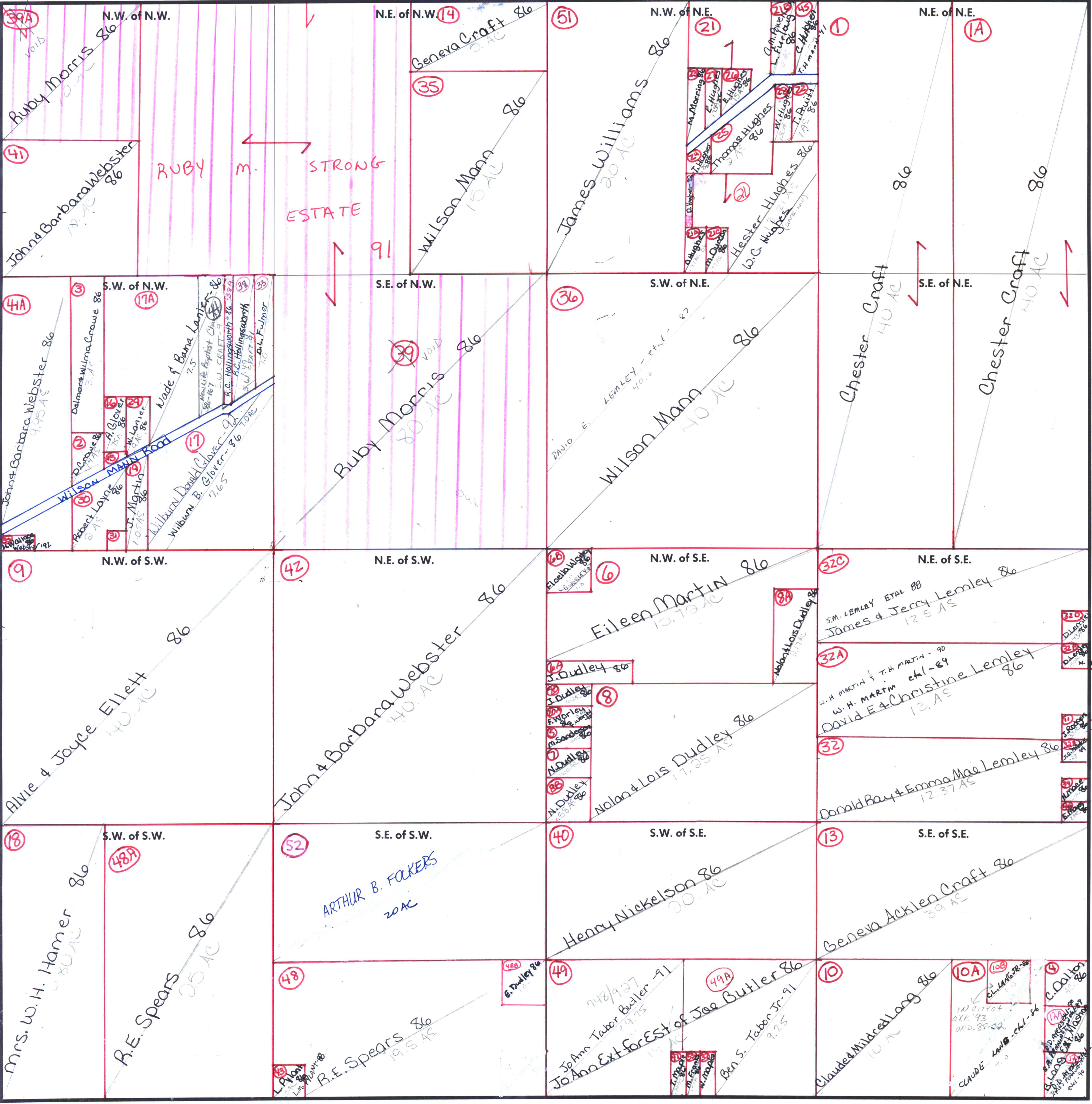
TOWNSHIP 5

RANGE 2E

2E

FORM 1-S.T.C.-ROBERTS & SON, BIRMINGHAM

LOTS  
1, 2, 3 & 4  
RUBY ST ROAD  
EST. IN  
OXR MAR 89



(15) Allen Glover  
86 25 AC  
(3) Robert Layne  
86 20 AC

with T. H. MARTIN - 90  
MARTIN - 84

B. You 12-89

COUNTY MADISON

Scale - 1 inch = 300 Ft.