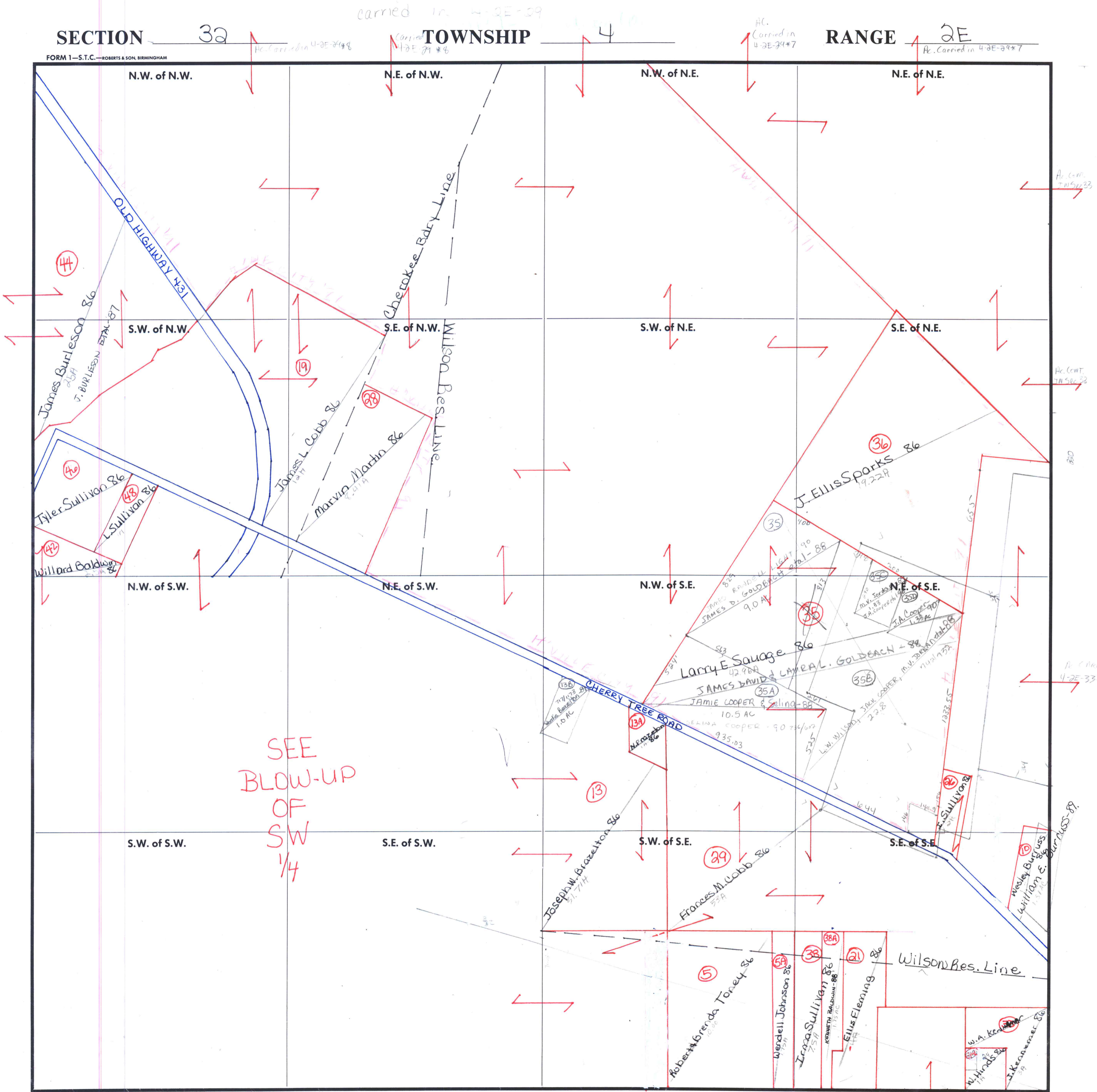


SECTION 32

TOWNSHIP 4

RANGE 2E

FORM 1—S.T.C.—ROBERTS & SON, BIRMINGHAM



SEE
BLOW-UP
OF
SW
1/4

Scale — 1 inch = 300 Ft.

COUNTY MADISON

4-2E-32*89H - ACKLIN CHRISTIAN METHODIST
EPISCOPAL CHURCH

Carried in
5-2E-34*7

(24B) Joseph Hinds