

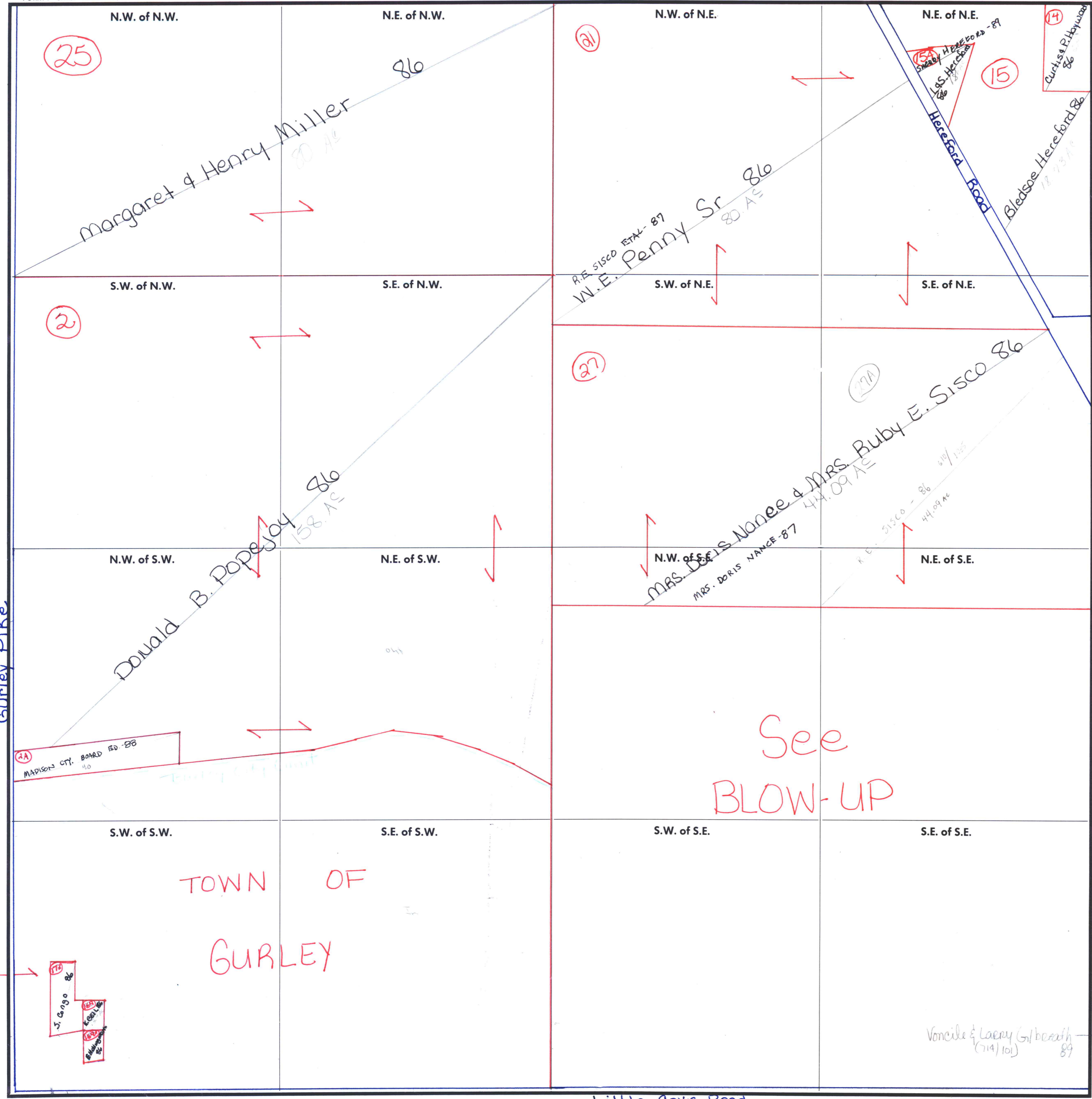
SECTION 12

TOWNSHIP 4

RANGE 2E

FORM 1—S.T.C.—ROBERTS & SON, BIRMINGHAM

man 07 - Gurley City Limit



TOWN OF GURLEY

See BLOW-UP

Jackson County Line

UNPLATEABLE

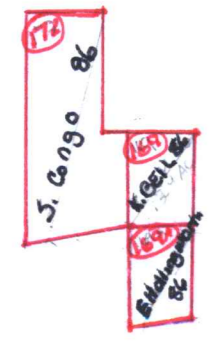
- X14 Horace & Effie McClellan 86
- X11 Music Johnson Hereford 86 1A<sup>c</sup>
- X12 Curtis & Polly Haywood 86 50A<sup>c</sup>
- X13 Curtis & Polly Haywood 86
- X4 Curtis & Polly Haywood 86
- X15 Ethel & Lavena Hollingsworth 86
- X16 Mrs. Kathryn Hereford 86
- X17 Lafayette Clay Adm for Est of Ida Clay 86
- X18 T. David Freeman 86
- X10 Lawrence & Vera Gilbreath 86 25A<sup>c</sup>
- X11 Virginia W & Ben Stevens 86
- X12 John & N. McCrary 86 5A<sup>c</sup>
- X13 Mrs. Doris Nance & Buby E. Sisco 86 4.38A<sup>c</sup>

Voncile & Lacey Gilbreath (714) 101 89

Scale - 1 inch = 300 Ft. Little Cove Road

COUNTY MADISON

Gurley Pike



MADISON CTY. BOARD ED-228 110

14 Curtis & P. Haywood 86

25

2

27

27A

26

15

N.W. of N.W.

N.E. of N.W.

N.W. of N.E.

N.E. of N.E.

S.W. of N.W.

S.E. of N.W.

S.W. of N.E.

S.E. of N.E.

N.W. of S.W.

N.E. of S.W.

N.W. of S.E.

N.E. of S.E.

S.W. of S.W.

S.E. of S.W.

S.W. of S.E.

S.E. of S.E.