

SECTION

33

TOWNSHIP

3

RANGE

2E

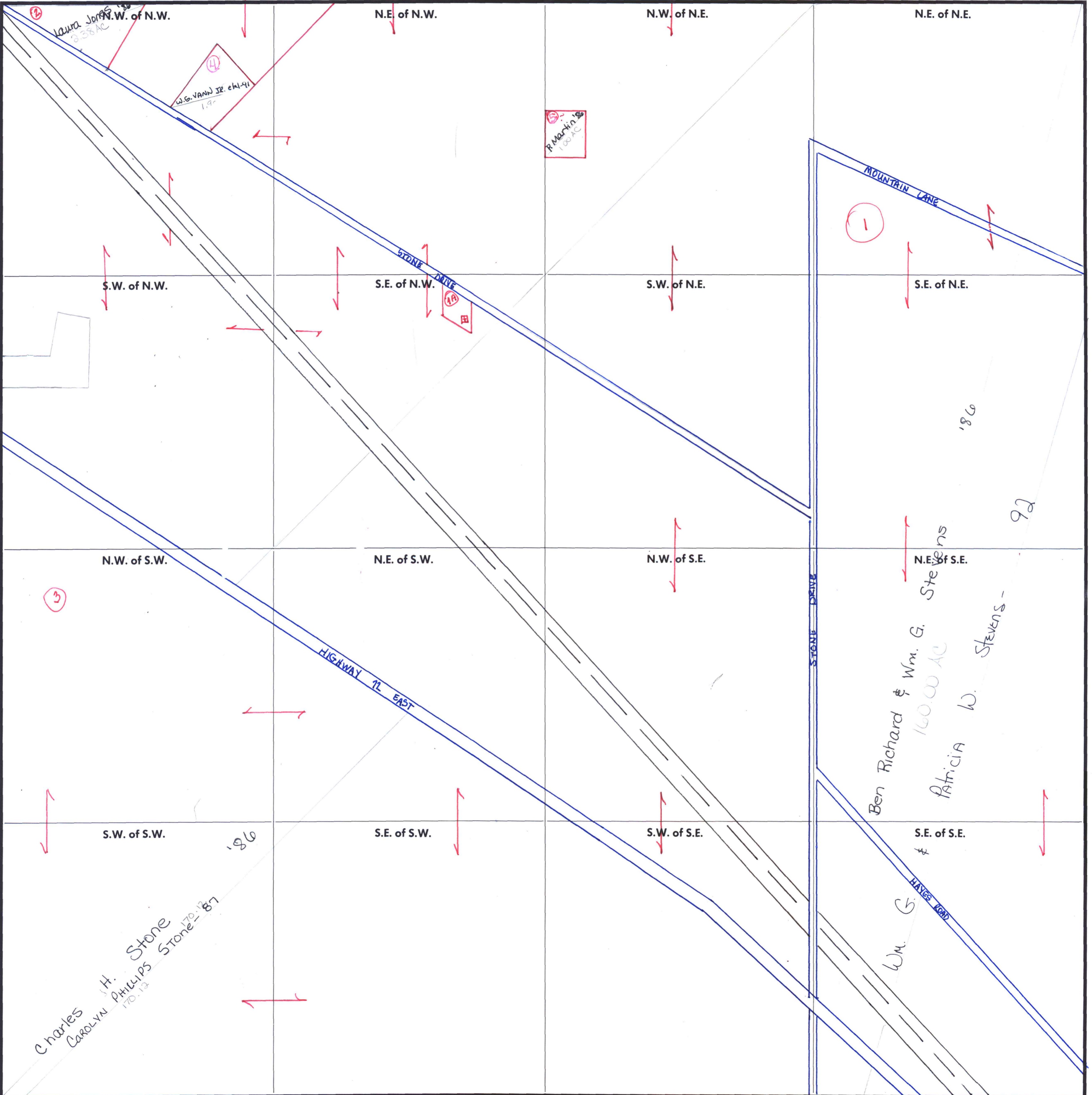
FORM 1—S.T.C.—ROBERTS & SON, BIRMINGHAM

Stacy

carried in 3-2E-28*22

carried in 3-2E-28*29

carried in 3-2E-29*29A



COUNTY MADISON

Scale - 1 inch = 300 Ft.