

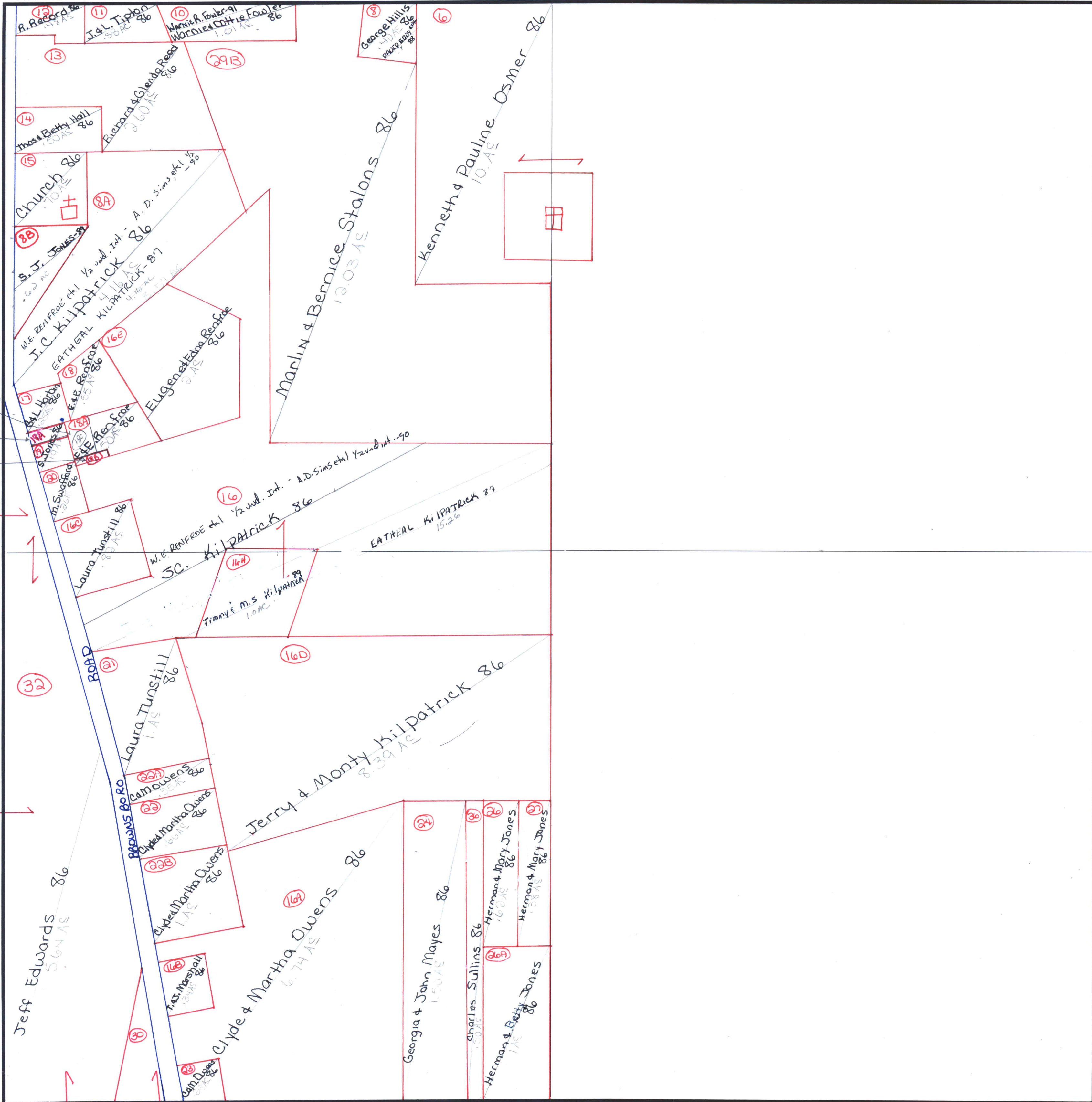
W 1/2 of NW 1/4

SECTION 21

TOWNSHIP 3

RANGE 2E

FORM 1-S.T.C.—ROBERTS & SON, BIRMINGHAM



18C - A.D. Sims et al - 91
 .06 AC

18P - A.D. Sims et al - 91
 .06 AC

18Q - SHELDON Jones - 91
 .03 AC

COUNTY MADISON

unavailable → (16F) Vito G. & Sherry G. LOZZARO - 87 - A.D. Sims et al - 91
 1 AC

(16G) A.D. Sims et al - 91
 1 AC

(16H) James F. KILPATRICK et al - 88
 1.01 AC