

SECTION

13

TOWNSHIP

3

RANGE

2E

FORM 1-S.F.C. ROBERTS & SON, BIRMINGHAM

Cont In 3-2E-12-5A

Carried in 3-2E-12-10A

Carried in 3-2E-12-10B

N.W. of N.W.

N.E. of N.W.

N.W. of N.E.

N.E. of N.E.

S.W. of N.W.

S.E. of N.W.

S.W. of N.E.

S.E. of N.E.

N.W. of S.W.

N.E. of S.W.

N.W. of S.E.

N.E. of S.E.

S.W. of S.W.

S.E. of S.W.

S.W. of S.E.

S.E. of S.E.

STANLEY M. RILPATRICK et al-91
Pan American Investment Co Inc
40 AC

JAMES W & JUDITH A MYERS
89.77 AC

Billy Joe Osmer
30 AC

Annie Sue Hawkins
30 AC

CLAUDE R & INEZ S. WHIDDON
22.05 AC

Steve & Janice Osmer
40 AC

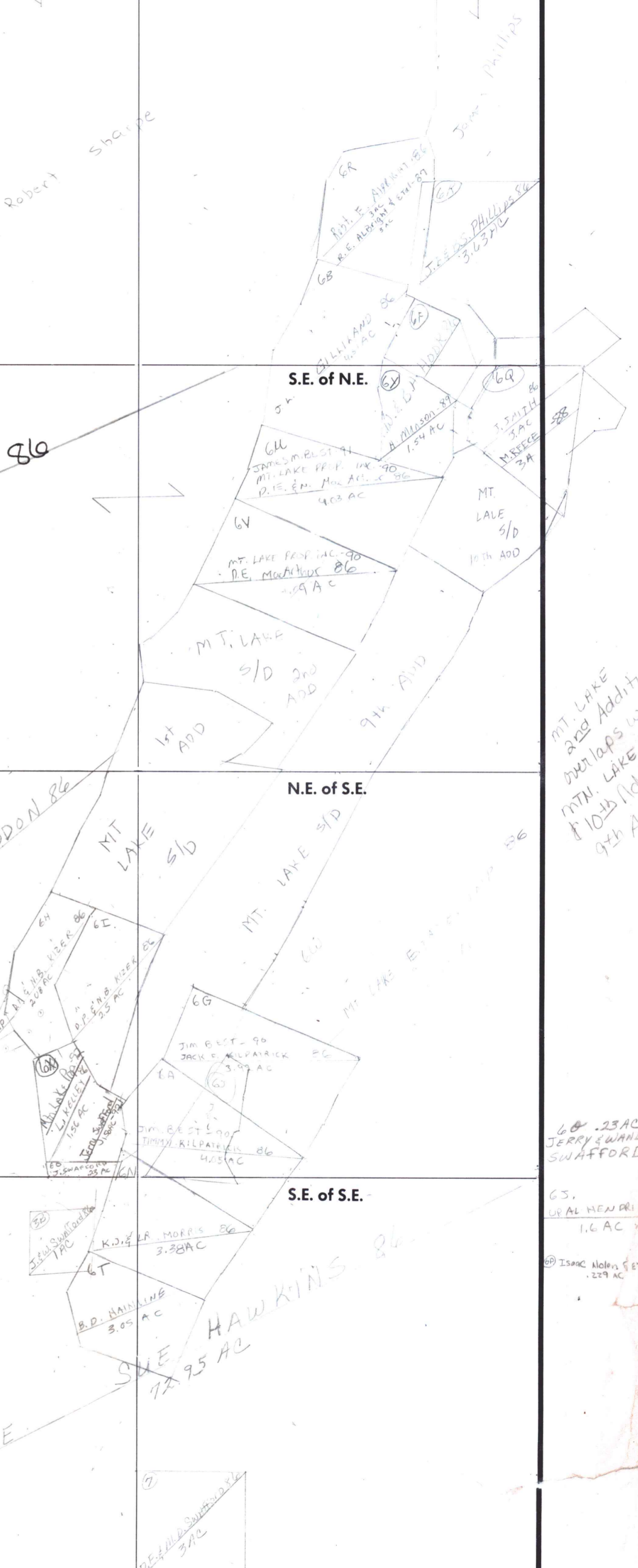
Billy Joe Osmer
40 AC

G. R. JR & C. D. HODGES
8.35 AC

K. D. & A. MORRIS
3.38 AC

B. D. HAINLINE
3.05 AC

SUE HAWKINS
72.95 AC



MT. LAKE
2200 Addition
of 10 1/2 (Add)
9th Add

68 .23 AC
JERRY & WANDA
SWAFFORD

65.
LEAL HENDRY
1.6 AC

69 Isaac W. Hensley et al-87
.229 AC