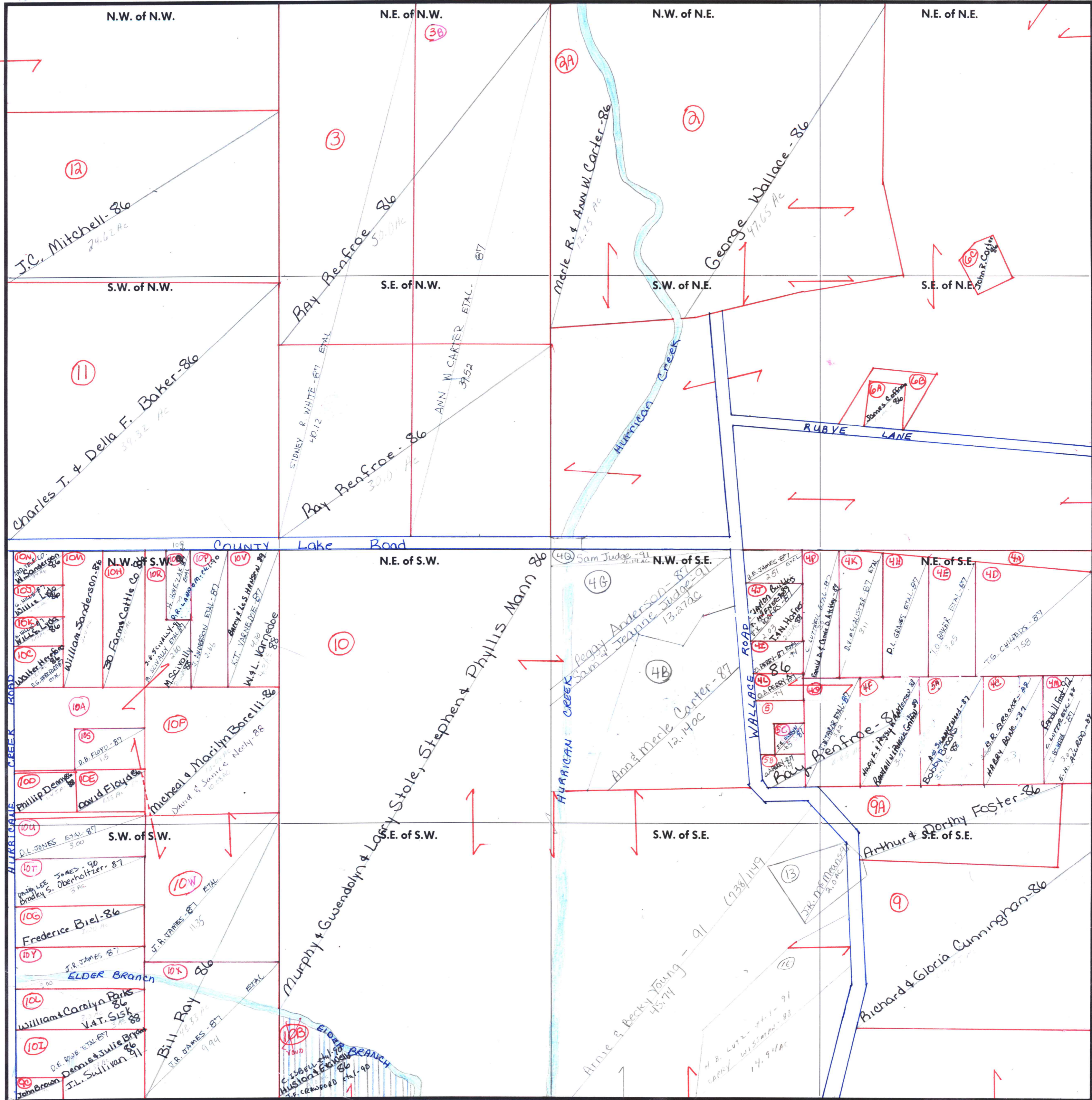


FORM 1—S.T.C.—ROBERTS & SON, BIRMINGHAM



COUNTY MADISON

Scale — 1 inch = 300 Ft.

CARRIED IN 2-2E-26

CARRIED IN 2-2E-26

James A. Jr. & Melane Colman 86 1.00 Ac

James F. & Josephine S. Crawford - 86 1.37 Ac

CARRIED IN 2-2E-34

CARRIED IN 2-2E-34 *-1D

CARRIED IN 2-2E-34