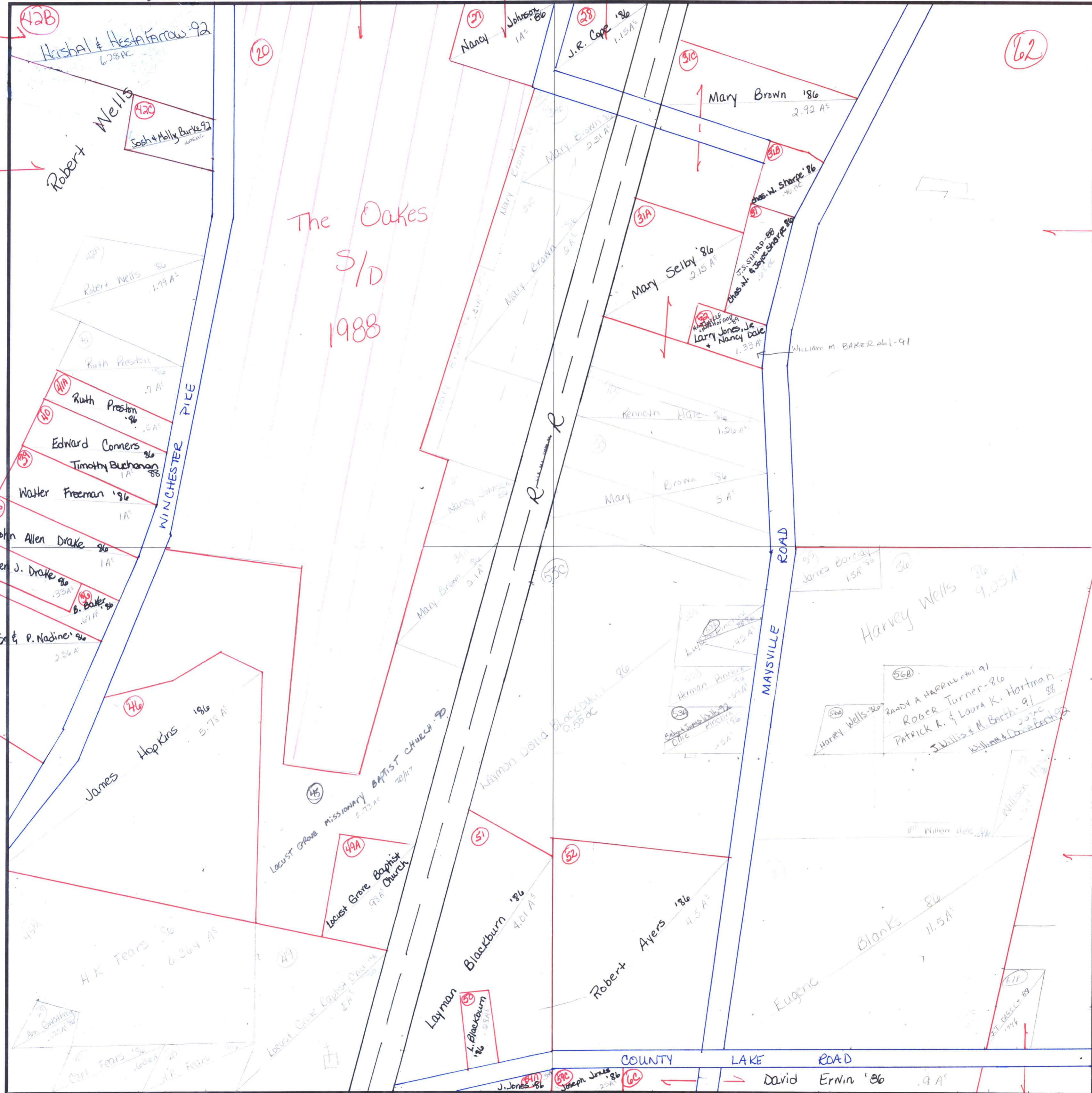


5/19/87
10:17

BLOW-UP

SECTION 19 TOWNSHIP 2 RANGE 2E

FORM 1-S.T.C.-ROBERTS & SON, BIRMINGHAM



COUNTY MADISON

30 Robert A. Coffe '86 1.7A
31 W.D. Alton '86 .77A - LOCUST GROVE MISS. CH. - 88
32 Herman Pincus '86 2.04A
33 Mary Brown '86 .2A