

SE 1/4

SECTION 33

33

carried in NE 1/4

TOWNSHIP 1

1

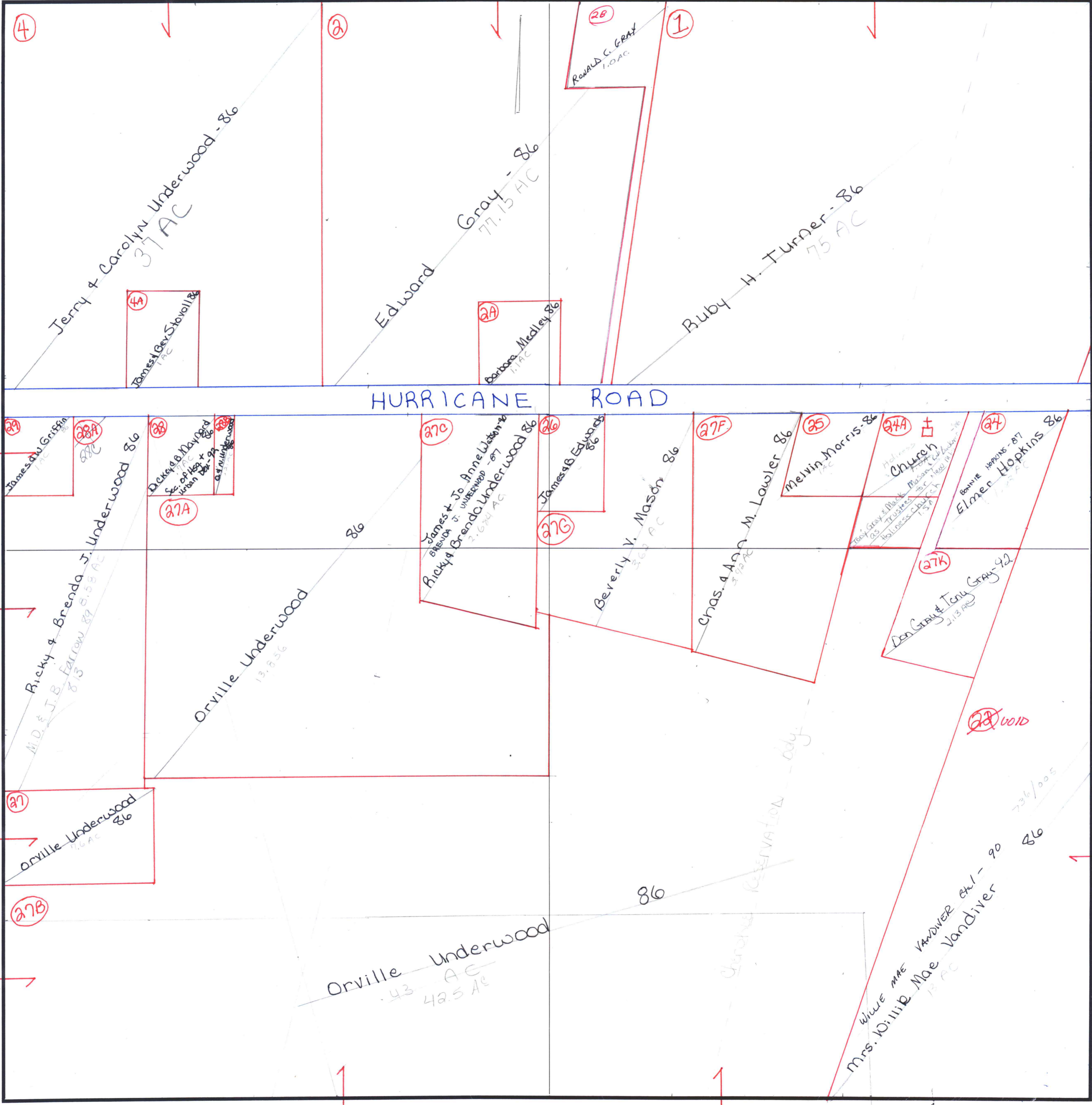
carried in NE 1/4

RANGE 2E

2E

carried in NE 1/4

FORM 1-S.T.C.—ROBERTS & SON, BIRMINGHAM



carried in SW 1/4 of sec

carried in SW 1/4 of sec

carried in SW 1/4 of sec

carried in SW 1/4 of sec

CARRIED IN 1-2E-34-104

COUNTY MADISON

UNPLATABLE 27E JOHN W. & OPA LEE WALLACE 26 1 AC

Carried in NE 1/4 of Sec 2-2E-4

carried in NE 1/4 of Sec 2-2E-4