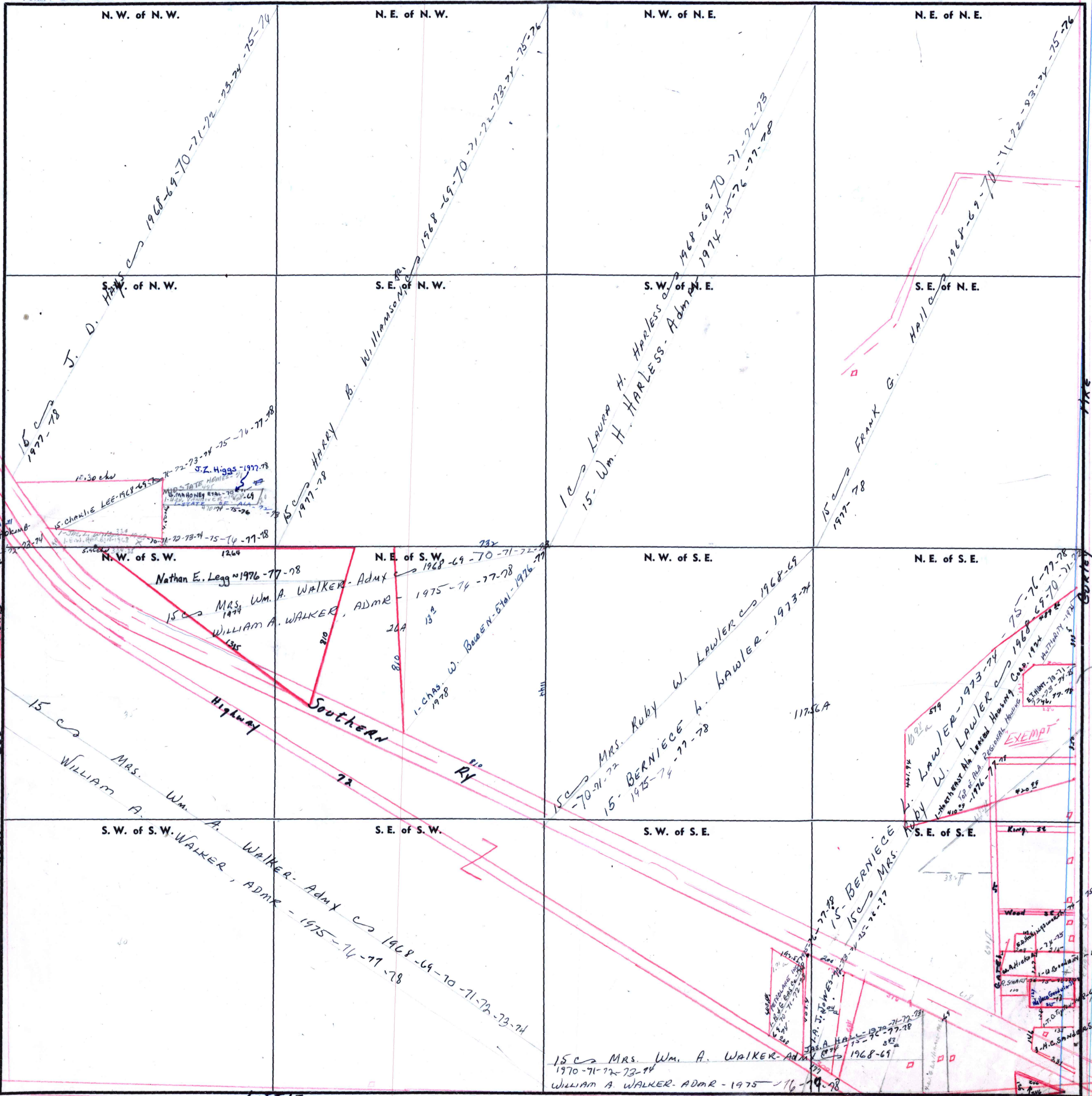


SECTION 11

TOWNSHIP 4 (irregular section lines)

RANGE 2E

FORM 1—S.T.C.—ROBERTS & SON, BIRMINGHAM



STATE OF ALABAMA  
COUNTY OF MOBILE

ROAD  
CUT  
DITCH

COUNTY

Scale—1 inch—300 Ft.

ROAD

L. C. Shipman-76-77-78