

SECTION

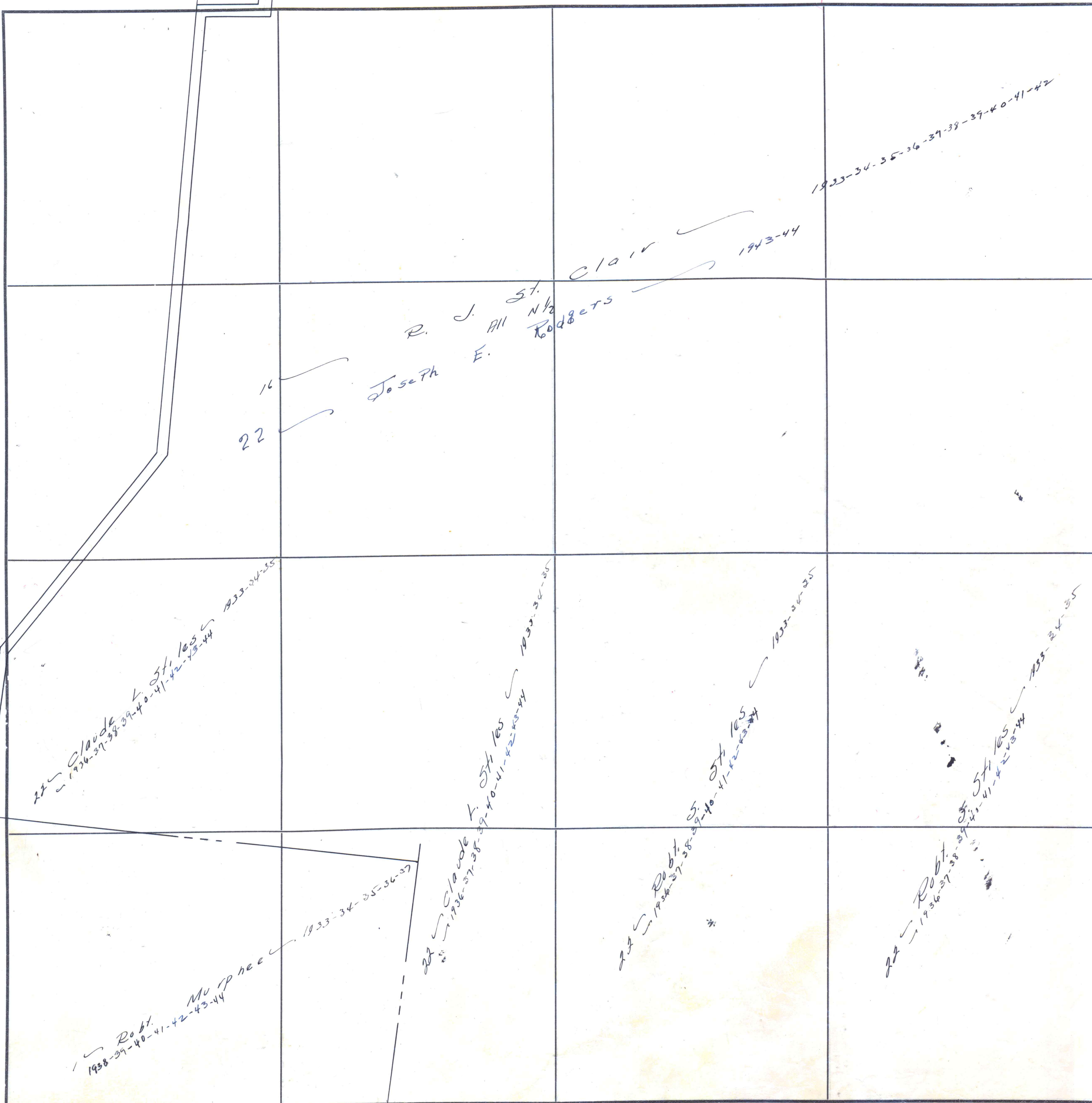
1

TOWNSHIP

3

RANGE

2, E.



22 ✓ Claude ✓ 5th 105 ✓
1936-37-38-39-40-41-42-43-44
1933-34-35

16 ✓
22 ✓
Joseph E.
R. J. St. Rodgers

22 ✓ Robt. ✓ 5th 105 ✓
1936-37-38-39-40-41-42-43-44
1933-34-35

22 ✓ Robt. ✓ 5th 105 ✓
1936-37-38-39-40-41-42-43-44
1933-34-35

4

1938-39-40-41-42-43-44
Robt.
MuPhee ✓
1933-34-35-36-37

22 ✓ Claude ✓
1936-37-38

Scale-300 Ft.=1 inch

COUNTY _____