

SECTION 24

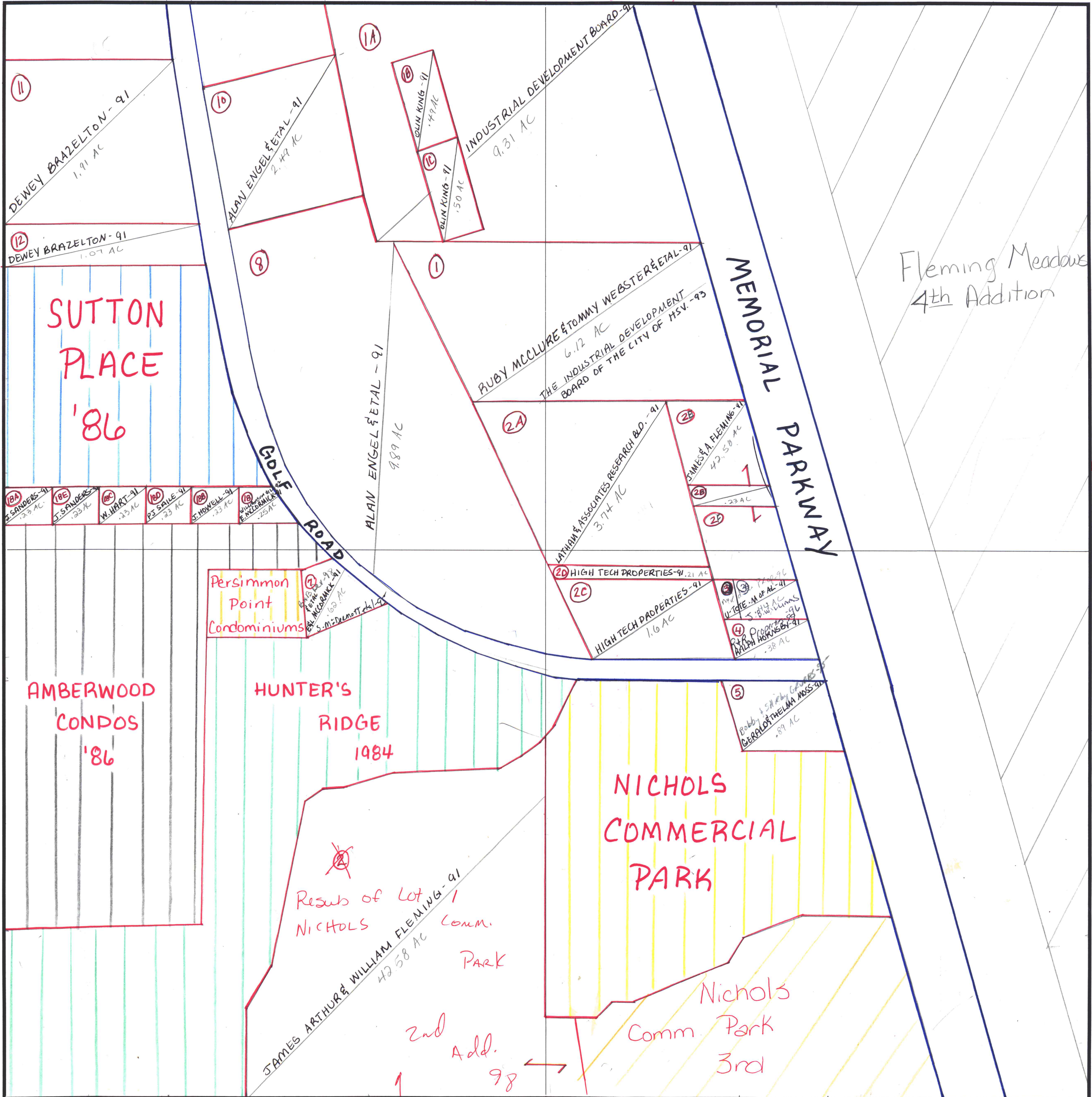
BLOW - UP of NE 1/4

TOWNSHIP 4

RANGE 1W 201

FORM 1-S.T.C.-CURRIE SYSTEMS, INC.

MUN 02 - HSV CITY



28 LATHAM & ASSOCIATES RESEARCH BUILDING INC -91

COUNTY MADISON