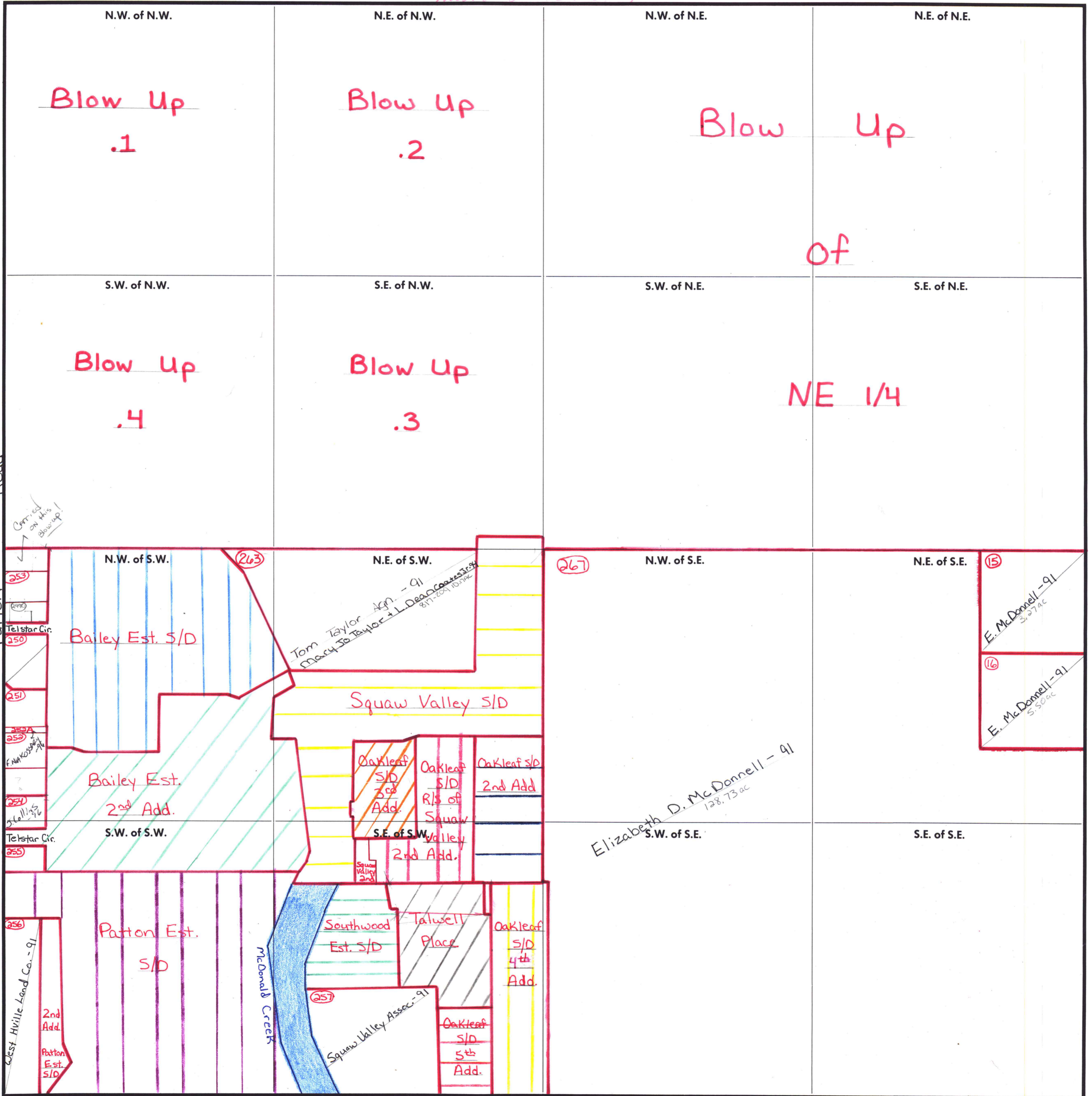


FORM 1—S.T.C.—CURRIE SYSTEMS, INC.

MUN 92-454 CITY



Patton Road

Carried on this Blow-up!

253
Telstar Cir.
250
251
252
253
254
Telstar Cir.
255
256
West Hillie Land Co. - 91
2nd Add.
Patton Est. S/D

N.W. of N.W.
Blow Up .1
S.W. of N.W.
Blow Up .4
N.W. of S.W.
Bailey Est. S/D
Bailey Est. 2nd Add.
S.W. of S.W.
Patton Est. S/D

N.E. of N.W.
Blow Up .2
S.E. of N.W.
Blow Up .3
N.E. of S.W.
Tom Taylor Agn. - 91
Mary Jo Taylor + L. Dean Coates 87-204 10 acre
Squaw Valley S/D
Oakleaf S/D 3rd Add.
Oakleaf S/D R/S of Squaw Valley 2nd Add.
Southwood Est. S/D
Talwell Place
Squaw Valley Assoc. - 91
Oakleaf S/D 5th Add.

N.W. of N.E.
Blow Up
S.W. of N.E.
NE 1/4
N.W. of S.E.
267
Elizabeth D. McDonnell - 91 128.73 ac
S.W. of S.E.

N.E. of N.E.
of
S.E. of N.E.
E. McDonnell - 91 3.27 ac
E. McDonnell - 91 5.50 ac
S.E. of S.E.